

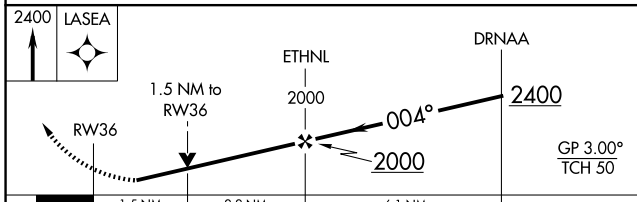
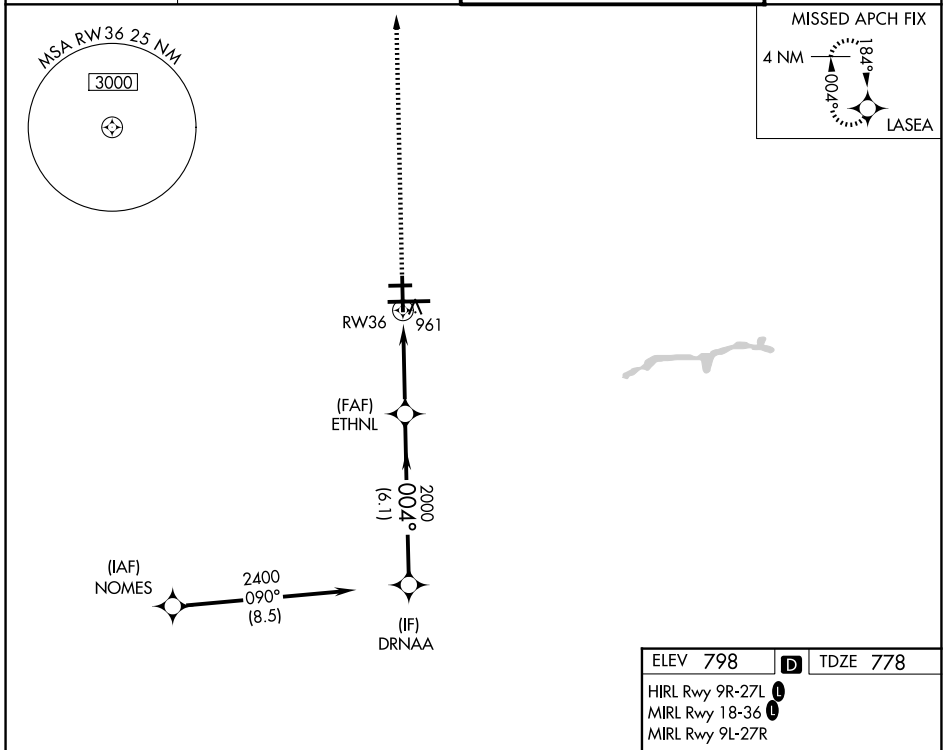
WAAS CH 69514 W36A	APP CRS 004°	Rwy Ldg 7101 TDZE 778 Apt Elev 798
--	------------------------	---

RNAV (GPS) RWY 36

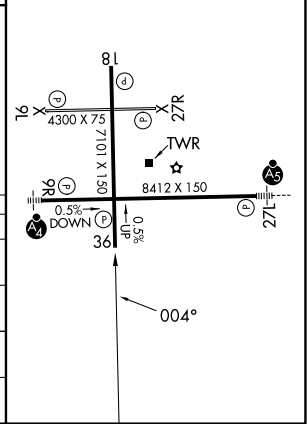
SOUTH BEND INTL (SBN)

RNP APCH - GPS.	MISSED APPROACH: Climb to 2400 direct LASEA and hold.
<p>▼ Circling Rwy 27R NA at night. Rwy 36 helicopter visibility reduction below $\frac{3}{4}$ SM NA. ▲ For uncompensated Baro-VNAV systems, LNAV/VNAV NA below -22°C or above 54°C.</p>	

ATIS 120.675	SOUTH BEND APP CON★ 118.55 257.8	SOUTH BEND TOWER★ 135.675 (CTAF) 0 257.8	GND CON 121.7
------------------------	--	--	-------------------------



ELEV 798	D TDZE 778
HIRL Rwy 9R-27L 1	
MIRL Rwy 18-36 1	
MIRL Rwy 9L-27R	



CATEGORY	A	B	C	D
LPV DA		1051- $\frac{7}{8}$	273 (300- $\frac{7}{8}$)	
LNAV/DA		1230-1 $\frac{3}{8}$	452 (500-1 $\frac{3}{8}$)	
LNAV MDA	1280-1	502 (500-1)	1280-1 $\frac{3}{8}$	502 (500-1 $\frac{3}{8}$)
CIRCLING	1280-1	482 (500-1)	1440-1 $\frac{3}{4}$ 642 (700-1 $\frac{3}{4}$)	1520-2 $\frac{1}{4}$ 722 (800-2 $\frac{1}{4}$)

EC-2, 16 APR 2026 to 14 MAY 2026

EC-2, 16 APR 2026 to 14 MAY 2026