

(BWALL2.BWALL) 22139

AL-401 (FAA)
SPARTANBURG DOWNTOWN MEML/SIMPSON FLD (SPA)

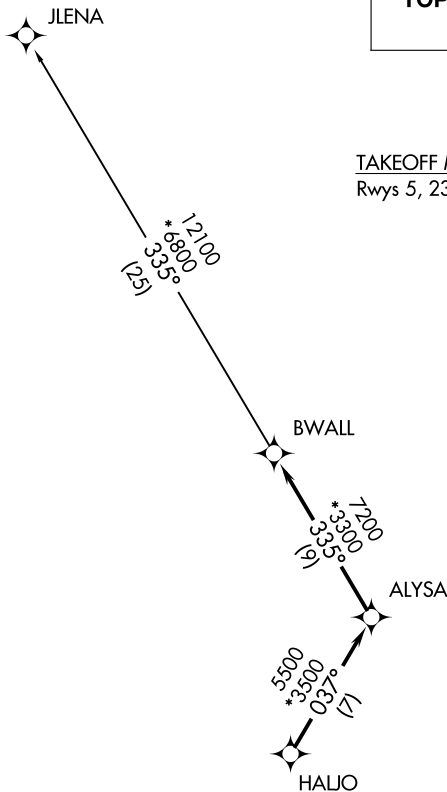
BWALL TWO DEPARTURE (RNAV)

SPARTANBURG, SOUTH CAROLINA

AWOS-3
133.925
CLNC DEL
120.55
UNICOM
123.0
GREER DEP CON ★
119.4 350.2

**TOP ALTITUDE:
3000**

TAKEOFF MINIMUMS
Rwys 5, 23: Standard.



- NOTE: For turbojets only.
- NOTE: RNAV 1.
- NOTE: RADAR required.
- NOTE: DME/DME/IRU or GPS required.
- NOTE: If unable to accept climb rates, advise ATC on initial contact.
- NOTE: Transponder code will be issued via PDC or CLNC DEL.

NOTE: Chart not to scale.

DEPARTURE ROUTE DESCRIPTION

TAKEOFF ALL RUNWAYS: Climb on assigned heading for RADAR vectors to HALJO, then on depicted route to BWALL, thence. . . .

. . . .on JLENA transition. Maintain 3000. Expect clearance to filed altitude within 10 minutes after departure.

JLENA TRANSITION (BWALL2.JLENA)

BWALL TWO DEPARTURE (RNAV)

SPARTANBURG, SOUTH CAROLINA

(BWALL2.BWALL) 25APR19

SPARTANBURG DOWNTOWN MEML/SIMPSON FLD (SPA)

SE-2, 16 APR 2026 to 14 MAY 2026

SE-2, 16 APR 2026 to 14 MAY 2026