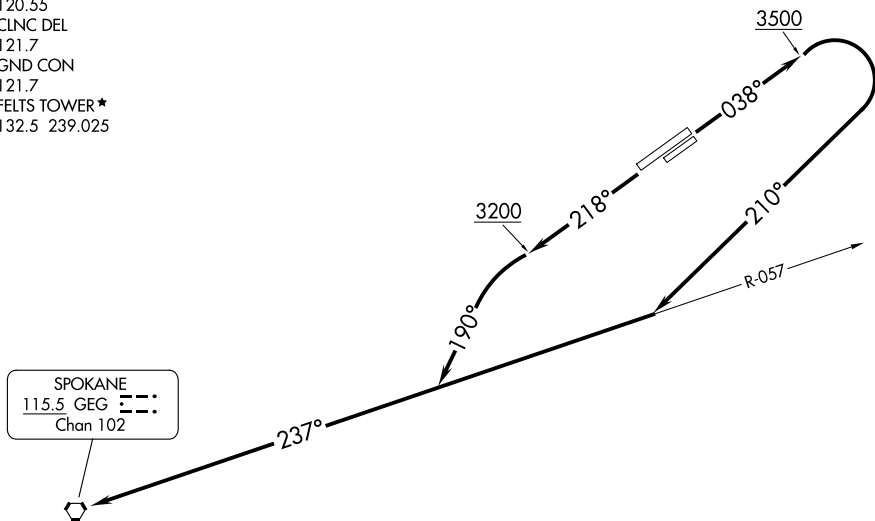
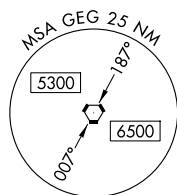


SPOKANE DEP CON
133.35 263.0
ATIS
120.55
CLNC DEL
121.7
GND CON
121.7
FELTS TOWER *
132.5 239.025



TAKEOFF MINIMUMS

- Rwy 4L: Standard with minimum climb of 495' per NM to 6000, or 2800-3 for VCOA.
- Rwy 4R: Standard with minimum climb of 485' per NM to 6000, or 2800-3 for VCOA.
- Rwy 22L: Standard with minimum climb of 230' per NM to 2800, or 2800-3 for VCOA.
- Rwy 22R: Standard with minimum climb of 250' per NM to 2800, or 2800-3 for VCOA.



(CONTINUED ON FOLLOWING PAGE)

NOTE: Chart not to scale.

DEPARTURE ROUTE DESCRIPTION

TAKEOFF RUNWAYS 4L/R: Climb on heading 038° to 3500, then climbing right turn to heading 210° to intercept GEG VORTAC R-057 to GEG VORTAC, thence. . . .

TAKEOFF RUNWAYS 22L/R: Climb on heading 218° to 3200, then climbing left turn to heading 190° to intercept GEG VORTAC R-057 to GEG VORTAC, thence. . . .

VCOA ALL RUNWAYS: Obtain ATC approval for VCOA when requesting IFR clearance. Climb in visual conditions to cross Felts Fld at or above 4600, then on GEG R-057 to GEG VORTAC, thence...

. . . .cross GEG VORTAC at or above MCA/MEA for assigned route of flight.

TAKEOFF OBSTACLE NOTES

- Rwy 4L: Light poles beginning 10' from DER, 77' right of centerline, up to 2' AGL/1959' MSL.
 Sign 33' from DER, 168' left of centerline, 5' AGL/1962' MSL.
 Building 1152' from DER, 757' right of centerline, 33' AGL/1987' MSL.
 Tree 1568' from DER, 902' right of centerline, 62' AGL/2016' MSL.
 Tree 1732' from DER, 862' right of centerline, 72' AGL/2026' MSL.
 Trees beginning 1844' from DER, 586' right of centerline, up to 91' AGL/2045' MSL.
 Trees beginning 2290' from DER, 373' right of centerline, up to 113' AGL/2064' MSL.
 Tree 3763' from DER, 1368' left of centerline, 92' AGL/2061' MSL.
 Trees beginning 4128' from DER, 1137' left of centerline, up to 106' AGL/2108' MSL.
 Tree 4726' from DER, 1558' left of centerline, 136' AGL/2133' MSL.
 Trees beginning 4728' from DER, 384' left of centerline, up to 129' AGL/2143' MSL.
 Trees beginning 5282' from DER, 607' left of centerline, up to 117' AGL/2171' MSL.
 Tree, building, vehicles on road beginning 5631' from DER, 765' left of centerline, up to 113' AGL/2174' MSL.
 Trees beginning 1 NM from DER, 1177' left of centerline, up to 65' AGL/2193' MSL.
 Trees, building beginning 1.1 NM from DER, 970' left of centerline, up to 94' AGL/2292' MSL.
 Trees beginning 1.2 NM from DER, 899' left of centerline, up to 116' AGL/2336' MSL.
 Trees beginning 1.3 NM from DER, 927' left of centerline, up to 120' AGL/2346' MSL.
 Trees beginning 1.4 NM from DER, 869' left of centerline, up to 96' AGL/2353' MSL.
 Trees, building, terrain beginning 1.5 NM from DER, 508' left of centerline, up to 85' AGL/2390' MSL.
 Buildings, trees beginning 1.6 NM from DER, 851' left of centerline, up to 40' AGL/2461' MSL.
 Trees, building, terrain beginning 1.7 NM from DER, 706' left of centerline, up to 59' AGL/2509' MSL.
 Trees, buildings, transmission lines, poles, terrain beginning 2 NM from DER, 14' left of centerline, up to 77' AGL/2522' MSL.
 Trees beginning 2.3 NM from DER, 37' right of centerline, up to 2344' MSL.
 Trees beginning 2.4 NM from DER, 12' right of centerline, up to 102' AGL/2432' MSL.
 Trees, transmission lines, poles, terrain beginning 2.5 NM from DER, 83' right of centerline, up to 125' AGL/2494' MSL.
- Rwy 4R: Light poles beginning 20' from DER, 389' left of centerline, up to 2' AGL/1959' MSL.
 Buildings, utility building beginning 85' from DER, 341' right of centerline, up to 19' AGL/1971' MSL.
 Buildings beginning 203' from DER, 284' right of centerline, up to 21' AGL/1974' MSL.
 Buildings beginning 303' from DER, 274' right of centerline, up to 22' AGL/1975' MSL.
 Buildings beginning 622' from DER, 276' right of centerline, up to 27' AGL/1981' MSL.
 Navaid, building beginning 920' from DER, 270' right of centerline, up to 33' AGL/1987' MSL.
 Trees, buildings, pole beginning 931' from DER, 257' right of centerline, up to 82' AGL/2036' MSL.
 Trees beginning 1854' from DER, 169' right of centerline, up to 91' AGL/2045' MSL.
 Trees beginning 1941' from DER, 86' right of centerline, up to 105' AGL/2059' MSL.
 Trees beginning 2300' from DER, 253' right of centerline, up to 113' AGL/2064' MSL.
 Trees beginning 2827' from DER, 584' right of centerline, up to 115' AGL/2065' MSL.
 Tree 3621' from DER, 127' left of centerline, 105' AGL/2053' MSL.
 Tree 4580' from DER, 1638' left of centerline, 112' AGL/2076' MSL.
 Trees beginning 4730' from DER, 843' left of centerline, up to 92' AGL/2087' MSL.
 Tree 4883' from DER, 946' left of centerline, 2089' MSL.
 Trees beginning 4900' from DER, 885' left of centerline, up to 105' AGL/2099' MSL.
 Trees beginning 5012' from DER, 870' left of centerline, up to 92' AGL/2109' MSL.
 Trees beginning 5292' from DER, 1108' left of centerline, up to 112' AGL/2121' MSL.
 Trees beginning 5401' from DER, 1268' left of centerline, up to 125' AGL/2134' MSL.
 Trees beginning 5500' from DER, 1720' left of centerline, up to 125' AGL/2139' MSL.
 Trees beginning 5620' from DER, 1266' left of centerline, up to 112' AGL/2146' MSL.
 Trees beginning 5987' from DER, 1868' left of centerline, up to 125' AGL/2154' MSL.
 Trees beginning 1.1 NM from DER, 1471' left of centerline, up to 94' AGL/2292' MSL.
 Trees beginning 1.2 NM from DER, 1401' left of centerline, up to 106' AGL/2321' MSL.
 Trees, building beginning 1.3 NM from DER, 1010' left of centerline, up to 111' AGL/2327' MSL.
 Trees, buildings, terrain beginning 1.5 NM from DER, 1019' left of centerline, up to 101' AGL/2332' MSL.
 Trees, buildings beginning 1.6 NM from DER, 1646' left of centerline, up to 73' AGL/2372' MSL.
 Buildings, trees beginning 1.7 NM from DER, 1694' left of centerline, up to 27' AGL/2377' MSL.
 Trees, buildings, terrain beginning 1.8 NM from DER, 2010' left of centerline, up to 57' AGL/2451' MSL.
 Buildings, trees, terrain beginning 1.9 NM from DER, 2005' left of centerline, up to 55' AGL/2470' MSL.
 Trees, buildings, transmission lines, poles, terrain, vegetation beginning 2 NM from DER, 34' left of centerline, up to 94' AGL/2522' MSL.
 Trees 2.4 NM from DER, 13' right of centerline, 102' AGL/2432' MSL.
 Trees, transmission lines, poles, terrain beginning 2.5 NM from DER, 103' right of centerline, up to 125' AGL/2494' MSL.

(CONTINUED ON FOLLOWING PAGE)

NW-1, 16 APR 2026 to 14 MAY 2026

NW-1, 16 APR 2026 to 14 MAY 2026

(CONTINUED)

TAKEOFF OBSTACLE NOTES

- Rwy 22L: Signs beginning 41' from DER 75' left of centerline up to 3' AGL/1954' MSL.
- Sign 96' from DER, 73' right of centerline, 3' AGL/1953' MSL.
- Sign 114' from DER, 236' left of centerline, 3' AGL/1955' MSL.
- Pole, building beginning 123' from DER, 473' left of centerline, up to 27' AGL/1979' MSL.
- Buildings beginning 450' from DER, 458' left of centerline, up to 43' AGL/1996' MSL.
- Building 539' from DER, 432' left of centerline, 44' AGL/1997' MSL.
- Building 605' from DER, 433' left of centerline, 45' AGL/1998' MSL.
- Trees, buildings, vehicles on the road, light poles, poles beginning 658' from DER, 291' left of centerline, up to 2008' MSL.
- Trees beginning 1126' from DER, 488' left of centerline, up to 59' AGL/2012' MSL.
- Trees, poles, transmission line, building beginning 1215' from DER, 172' left of centerline, up to 71' AGL/2024' MSL.
- Trees, pole beginning 2078' from DER, 206' left of centerline, up to 92' AGL/2043' MSL.
- Building, elevators beginning 4482' from DER, 574' left of centerline, up to 134' AGL/2084' MSL.
- Rwy 22R: Fence, vehicles on road, navaid beginning 1' from DER, 121' right of centerline, up to 6' AGL/1949' MSL.
- Signs, navaid beginning 36' from DER, 117' left of centerline, up to 3' AGL/1953' MSL.
- Vehicles on road 187' from DER, 446' right of centerline, 1954' MSL.
- Trees beginning 191' from DER, 500' right of centerline, up to 1975' MSL.
- Building 202' from DER, 496' left of centerline, 18' AGL/1969' MSL.
- Building 210' from DER, 501' left of centerline, 22' AGL/1973' MSL.
- Buildings beginning 267' from DER, 507' left of centerline, up to 23' AGL/1974' MSL.
- Trees, transmission lines, poles beginning 500' from DER, 64' right of centerline, up to 63' AGL/1995' MSL.
- Pole, vehicles on road, buildings beginning 651' from DER, 229' left of centerline, up to 38' AGL/1987' MSL.
- Tree, vehicles on road beginning 1020' from DER, 471' left of centerline, up to 40' AGL/1989' MSL.
- Tower 1178' from DER, 439' left of centerline, 40' AGL/1997' MSL.
- Tree, poles, transmission line beginning 1260' from DER, 3' left of centerline, up to 51' AGL/2000' MSL.
- Trees, poles, transmission line beginning 1493' from DER, 191' left of centerline, up to 70' AGL/2018' MSL.
- Building, elevators, tower beginning 2643' from DER, 1072' left of centerline, up to 134' AGL/2084' MSL.

NW-1, 16 APR 2026 to 14 MAY 2026

NW-1, 16 APR 2026 to 14 MAY 2026