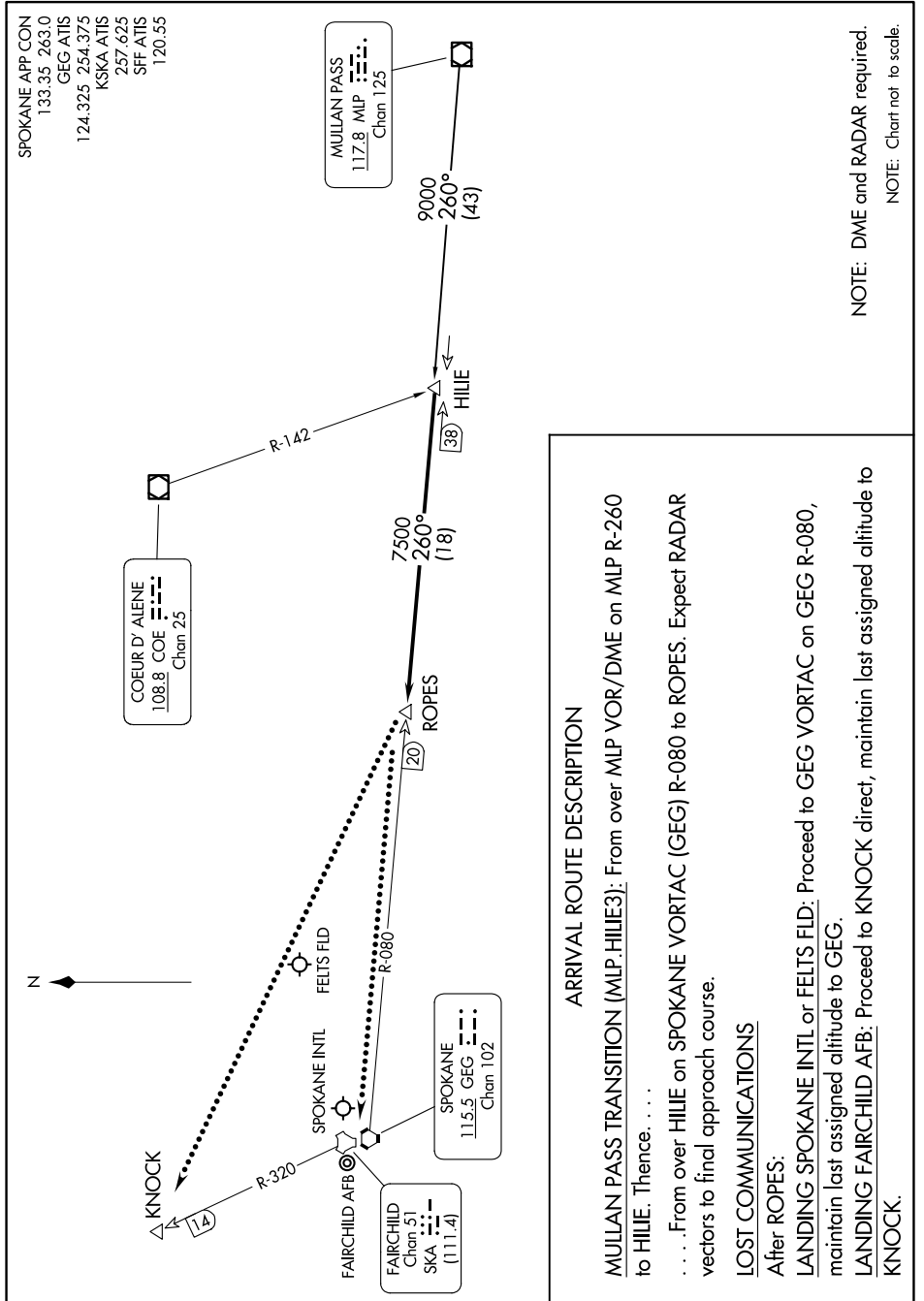


NW-1, 16 APR 2026 to 14 MAY 2026



**ARRIVAL ROUTE DESCRIPTION**

MULLAN PASS TRANSITION (MLP.HILIE3): From over MLP VOR/DME on MLP R-260 to HILIE. Thence . . . . .

. . . . . From over HILIE on SPOKANE VORTAC (GEG) R-080 to ROPES. Expect RADAR vectors to final approach course.

**LOST COMMUNICATIONS**

After ROPES:

LANDING SPOKANE INTL or FELTS FLD: Proceed to GEG VORTAC on GEG R-080, maintain last assigned altitude to GEG.

LANDING FAIRCHILD AFB: Proceed to KNOCK direct, maintain last assigned altitude to KNOCK.

NW-1, 16 APR 2026 to 14 MAY 2026