

| | | | |
|--|------------------------|-----------------------------|--|
| LOC/DME I-OLJ 111.1 Chan 48 | APP CRS 031° | Rwy Ldg TDZE Apt Elev | 11002 2385 2385 |
|--|------------------------|-----------------------------|--|

ILS or LOC RWY 3

SPOKANE INTL (GEG)

DME required for localizer only.

For inop ALS, increase S-LOC 3 Cat C/D visibility to RVR 5500.



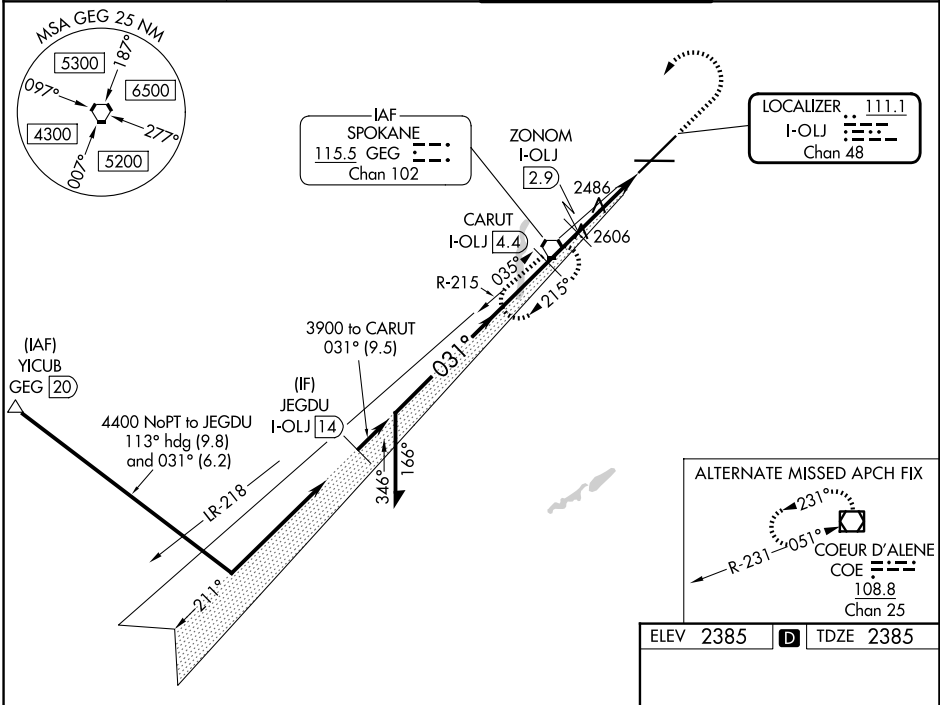
MISSED APPROACH: Climb to 2900 then climbing left turn to 4200 direct GEG VORTAC and hold, continue climb-in-hold to 4200.

ATIS
124.325 254.375

SPOKANE APP CON
123.75 282.25 (205°-025°)
133.35 263.0 (026°-204°)

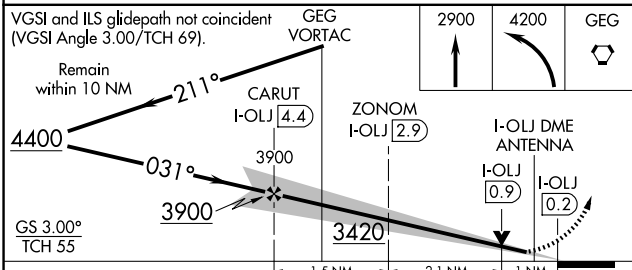
SPOKANE TOWER
118.3 278.3

GND CON
121.9 348.6



NW-1, 16 APR 2026 to 14 MAY 2026

NW-1, 16 APR 2026 to 14 MAY 2026



ELEV 2385 TDZE 2385

| CATEGORY | A | B | C | D |
|----------|-----------------------|-----------------------|-------------------------|------------------------|
| S-ILS 3 | 2585/18 200 (200-½) | | | |
| S-LOC 3 | 2780/24 | 395 (400-½) | 2780/35 | 395 (400-¾) |
| CIRCLING | 2960-1 575 (600-1) | 2980-1 595 (600-1) | 3180-2¼ 795 (800-2¼) | 3380-3 995 (1000-3) |

