

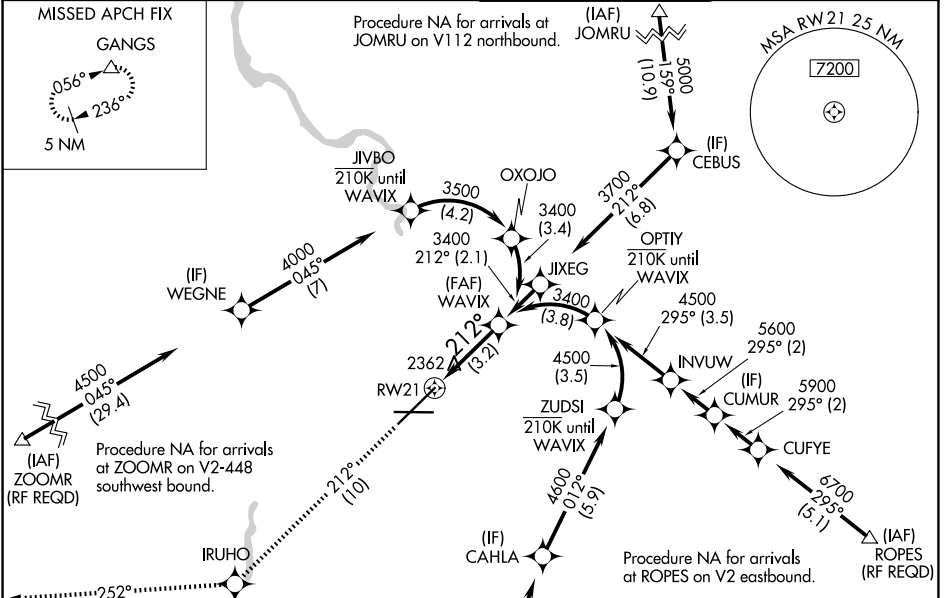
APP CRS	Rwy Ldg	<b>11002</b>
<b>212°</b>	TDZE	<b>2346</b>
	Apt Elev	<b>2385</b>

# RNAV (RNP) Z RWY 21

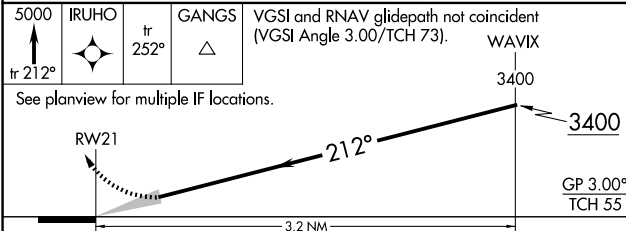
SPOKANE INTL (GEG)

RNP AR APCH.	ALSIF-2	MISSED APPROACH: Climb to 5000 on track 212° to IRUHO and on track 252° to GANGS and hold.
<p>▼ For uncompensated Baro-VNAV systems, procedure NA below -19°C or above 43°C. For inop ALS increase RNP 0.11 visibility all Cats to ¾, RNP 0.15 visibility all Cats to 1½ and RNP 0.30 visibility all Cats to 1¾.</p>		*Missed approach requires minimum climb of 310 feet per NM to 3000.

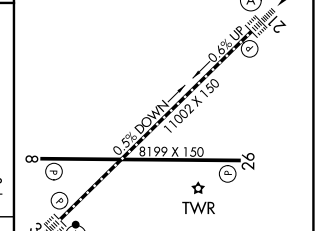
ATIS	SPOKANE APP CON	SPOKANE TOWER	GND CON
<b>124.325 254.375</b>	<b>123.75 282.25</b> (205°-025°) <b>133.35 263.0</b> (026°-204°)	<b>118.3 278.3</b>	<b>121.9 348.6</b>



ELEV 5000	IRUHO	GANGS	VGSI and RNAV glidepath not coincident (VGSI Angle 3.00/TCH 73).
tr 212°	tr 252°	△	WAVIX
See planview for multiple IF locations.			



ELEV 2385	TDZE 2346
-----------	-----------



CATEGORY	A	B	C	D
RNP 0.11 DA*		2596/24	250 (300-½)	
RNP 0.15 DA		2699/30	353 (400-⅝)	
RNP 0.30 DA		2752/45	406 (400-¾)	

TDZL/RCLS Rwy 3 and 21  
REIL Rwy 8 and 26  
HIRL Rwy 3-21  
MIRL Rwy 8-26

## AUTHORIZATION REQUIRED

NW-1, 16 APR 2026 to 14 MAY 2026

NW-1, 16 APR 2026 to 14 MAY 2026