

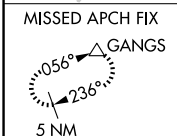
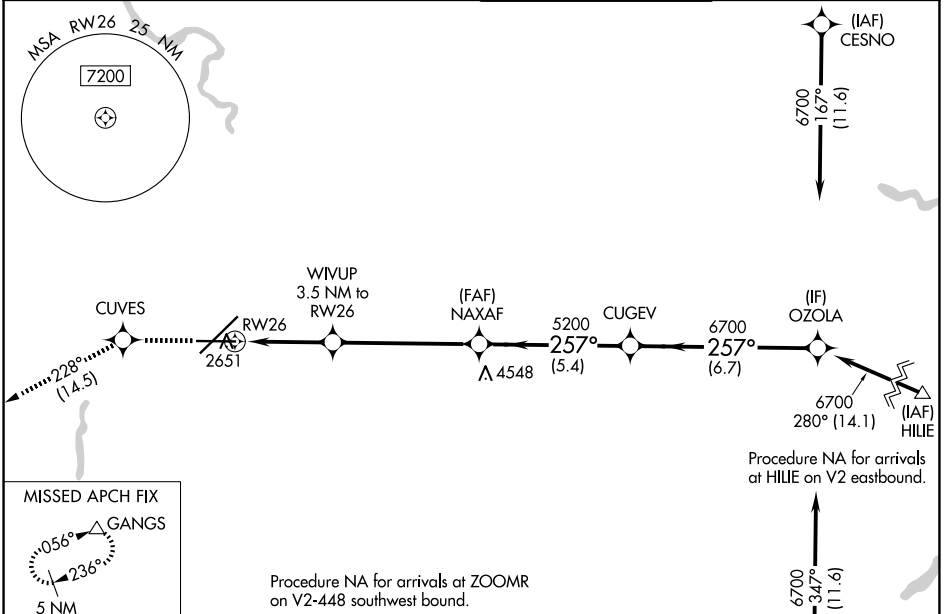
WAAS CH 93501 W26A	APP CRS 257°	Rwy Ldg TDZE Apt Elev	8199 2372 2385
---------------------------------	------------------------	-----------------------------	---

RNAV (GPS) Y RWY 26

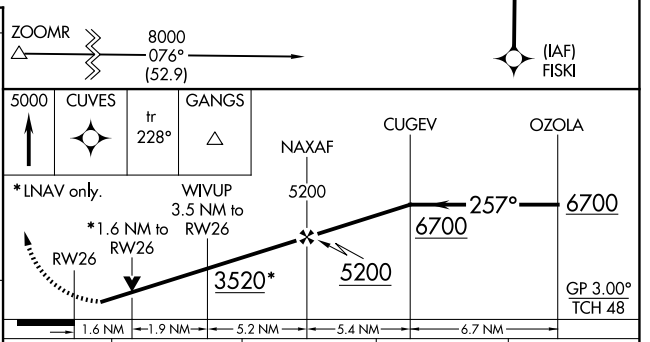
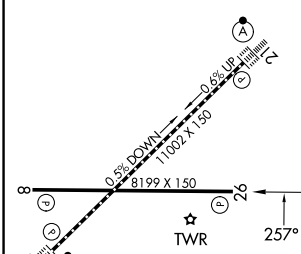
SPOKANE INTL (GEG)

RNP APCH.	MISSED APPROACH: Climb to 5000 direct CUVES and on track 228° to GANGS and hold.
<p>▼ Rwy 26 helicopter visibility reduction below 3/4 SM NA. ▲ For uncompensated Baro-VNAV systems, LNAV/VNAV NA below -18°C or above 54°C.</p>	

ATIS 124.325 254.375	SPOKANE APP CON 123.75 282.25 (205°-025°) 133.35 263.0 (026°-204°)	SPOKANE TOWER 118.3 278.3	GND CON 121.9 348.6
--------------------------------	--	-------------------------------------	-------------------------------



ELEV 2385	D	TDZE 2372
-----------	----------	-----------



CATEGORY	A	B	C	D
LPV DA		2688-1	316 (400-1)	
LNAV/VNAV DA		2911-1½	539 (600-1½)	
LNAV MDA	2920-1	548 (600-1)	2920-1½	548 (600-1½)
CIRCLING	2960-1 575 (600-1)	2980-1 595 (600-1)	3300-2¾ 915 (1000-2¾)	3400-3 1015 (1100-3)

TDZL/RCLS Rws 3 and 21
REIL Rws 8 and 26
HIRL Rwy 3-21
MIRL Rwy 8-26

NW-1, 16 APR 2026 to 14 MAY 2026

NW-1, 16 APR 2026 to 14 MAY 2026