

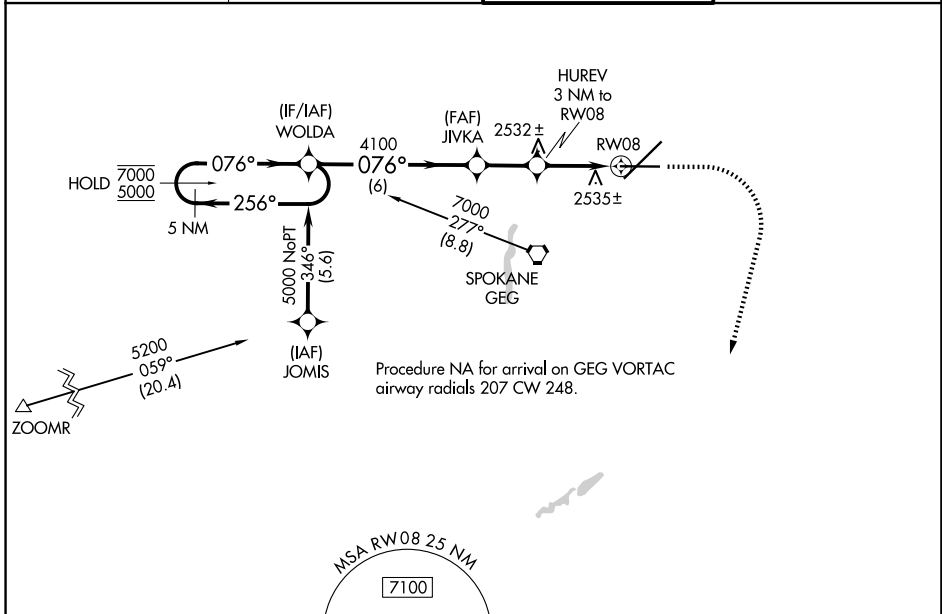
WAAS CH 48801 W08A	APP CRS 076°	Rwy Ldg TDZE Apt Elev	8199 2376 2385
--	------------------------	-----------------------------	---

RNAV (GPS) Y RWY 8

SPOKANE INTL (GEG)

RNP APCH.	MISSED APPROACH: Climb to 2900, then climbing right turn to 6000 direct ATOXE and hold.
For uncompensated Baro-VNAV systems, LNAV/VNAV NA below -18°C or above 52°C.	

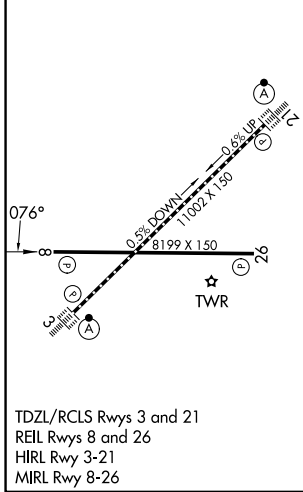
ATIS 124.325 254.375	SPOKANE APP CON 123.75 282.25 (205°-025°) 133.35 263.0 (026°-204°)	SPOKANE TOWER 118.3 278.3	GND CON 121.9 348.6
--------------------------------	--	-------------------------------------	-------------------------------



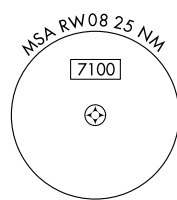
NW-1, 16 APR 2026 to 14 MAY 2026

NW-1, 16 APR 2026 to 14 MAY 2026

ELEV 2385	D	TDZE 2376
-----------	----------	-----------



TDZL/RCLS Rwy 3 and 21
REIL Rwy 8 and 26
HIRL Rwy 3-21
MIRL Rwy 8-26



5 NM Holding Pattern		WOLDA		JIVKA		HUREV 3 NM to RWY 08		2900	6000	ATOXE
7000 ← 256°		→ 076°		076°		4100		↑	↘	△
5000				4100		3400		1.2 NM to RWY 08		
GP 3.00°		TCH 60		6 NM		2.1 NM		1.8 NM		1.2
CATEGORY	A	B	C	D						
LPV DA	2576-¾		200 (200-¾)							
LNAV/VNAV DA	2834-1½		458 (500-1½)							
LNAV MDA	2800-1	424 (500-1)	2800-1¼	424 (500-1¼)						