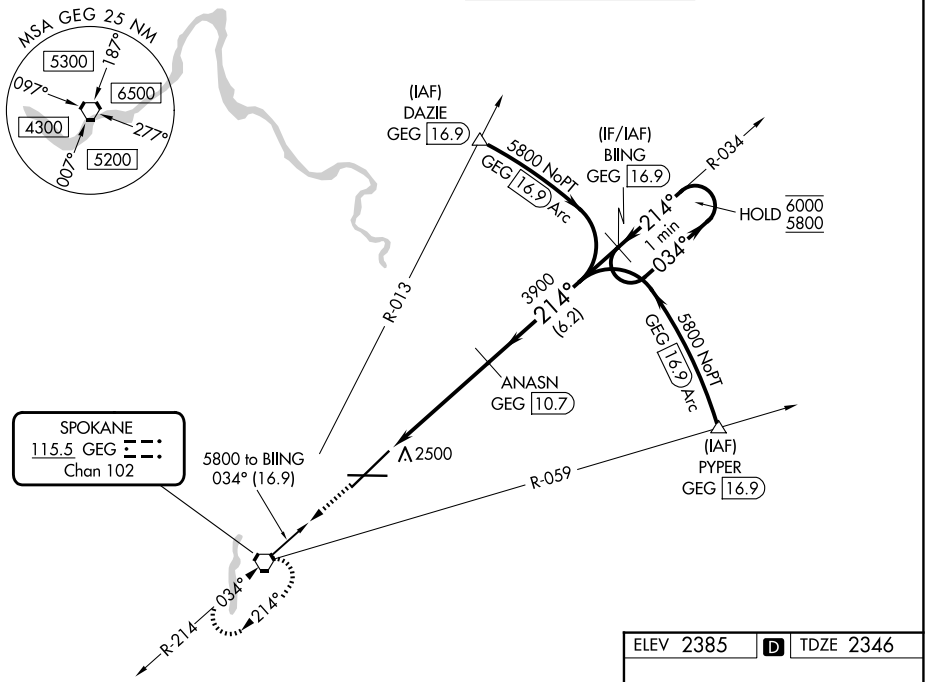


VORTAC GEG 115.5 Chan 102	APP CRS 214°	Rwy Ldg TDZE Apt Elev	11002 2346 2385
---	------------------------	-----------------------------	--

VOR RWY 21

SPOKANE INTL (GEG)

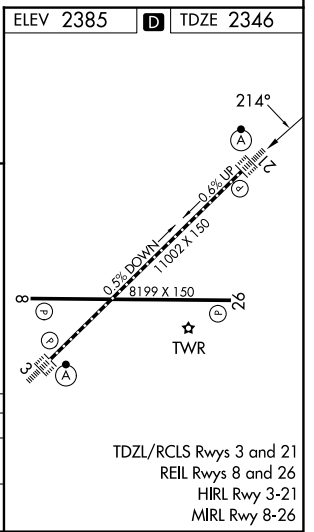
DME required.		ALSF-2	MISSED APPROACH: Climb to 4200 direct GEG VORTAC and hold, continue climb-in-hold to 4200.	
ATIS 124.325 254.375	SPOKANE APP CON 123.75 282.25 (205°-025°) 133.35 263.0 (026°-204°)		SPOKANE TOWER 118.3 278.3	GND CON 121.9 348.6



NW-1, 16 APR 2026 to 14 MAY 2026

NW-1, 16 APR 2026 to 14 MAY 2026

4200	GEG	VGS1 and descent angles not coincident (VGS1 Angle 3.00/TCH 73).	
↑	⬡	ANASN GEG 10.7	BILING GEG 16.9
		One Minute Holding Pattern	
		3900	6000 5800
		1.1 NM	3.6 NM
		21.4°	034°
		3.00° TCH 55	21.4°
CATEGORY	A	B	C
S-21	2760/24	414 (400-½)	2760/40
CIRCLING	2960-1 575 (600-1)	2980-1 595 (600-1)	3180-2¼ 795 (800-2¼)
			3380-3 995 (1000-3)



TDZL/RCLS Rwy 3 and 21
REIL Rwy 8 and 26
HIRL Rwy 3-21
MIRL Rwy 8-26