


ILS or LOC RWY 29R

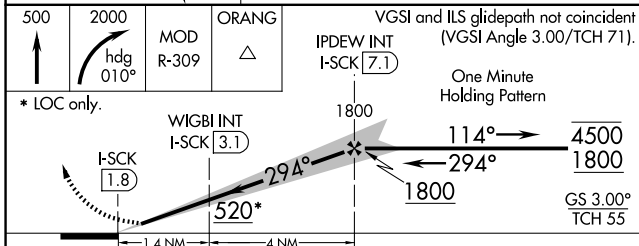
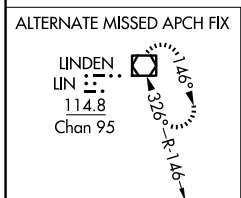
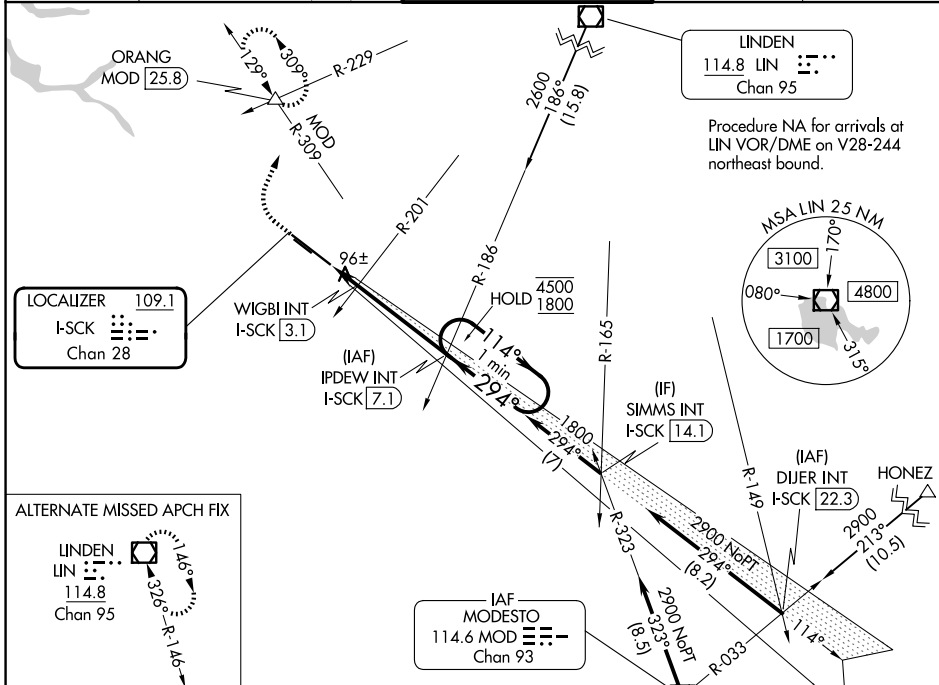
STOCKTON METRO (SCK)

| | | |
|--|------------------------|------------------------|
| LOC/DME I-SCK 109.1 Chan 28 | APP CRS 294° | Rwy Ldg 8650 |
| | TDZE 32 | |
| | Apt Elev 33 | |

⚠ For inop ALS, increase S-LOC 29R Cat C/D visibility to 1 3/8 SM.
⚠ #RVR 1800 authorized with use of FD or AP or HUD to DA.

MALS  MISSED APPROACH: Climb to 500 then climbing right turn to 2000 on heading 010° and MOD VOR/DME R-309 to ORANG INT/MOD 25.8 DME and hold.

| | | | | |
|-----------------------|--|--|-------------------------|-------------------------|
| ATIS 118.25 | NORCAL APP CON 123.85 278.3 (SE-NW) 125.1 363.2 (N-SE) | STOCKTON TOWER * 120.3 (CTAF) 0 239.0 | GND CON 121.9 | UNICOM 122.95 |
|-----------------------|--|--|-------------------------|-------------------------|



| CATEGORY | A | B | C | D |
|---|----------------------|----------------------|------------------------------|----------------------|
| S-ILS 29R # | 232/24 | | 200 (200-1/2) | |
| S-LOC 29R | 520/24 | 488 (500-1/2) | 520/50 | 488 (500-1) |
| CIRCLING | 520-1 487 (500-1) | 540-1 507 (600-1) | 640-1 3/4 607 (700-1 3/4) | 640-2 607 (700-2) |
| WIGBI FIX MINIMUMS (DUAL VOR RECEIVERS or DME REQUIRED) | | | | |
| S-LOC 29R | 360/24 | 328 (400-1/2) | 360/26 | 328 (400-1/2) |
| CIRCLING | 500-1 467 (500-1) | 540-1 507 (600-1) | 640-1 3/4 607 (700-1 3/4) | 640-2 607 (700-2) |

| | |
|-------------------|--------------------------|
| ELEV 33 | TDZE 32 |
| | |
| HIRL Rwy 11L-29R | |
| FAF to MAP 5.4 NM | |
| Knots | 60 90 120 150 180 |
| Min:Sec | 5:24 3:36 2:42 2:10 1:48 |

SW-2, 16 APR 2026 to 14 MAY 2026

SW-2, 16 APR 2026 to 14 MAY 2026