

WAAS CH <b>72910</b> W11A	APP CRS <b>114°</b>	Rwy Ldg TDZE <b>29</b> Apt Elev <b>33</b>
---------------------------------	------------------------	---

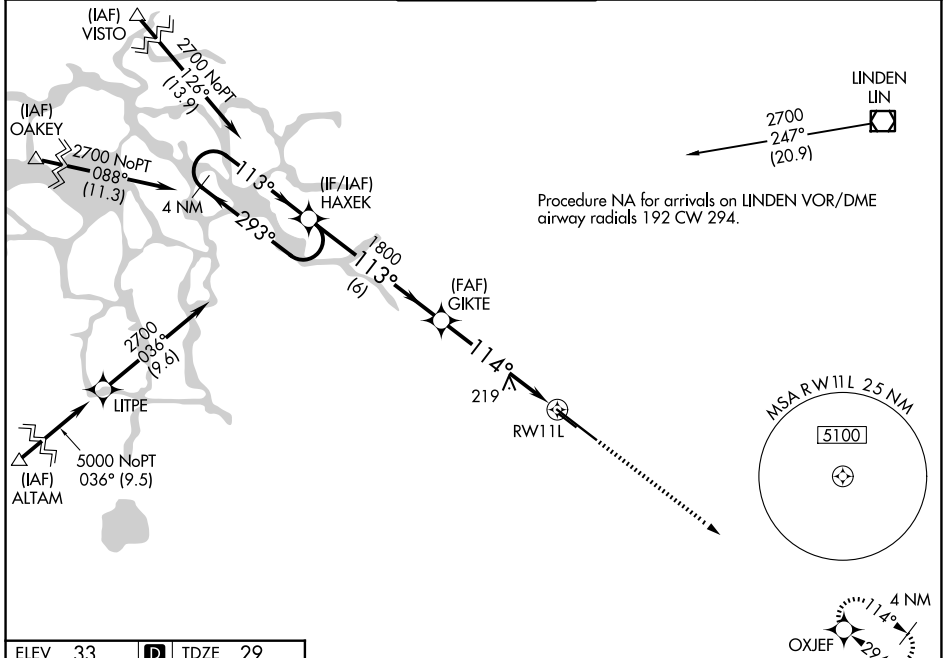
# RNAV (GPS) RWY 11L

STOCKTON METRO (SCK)

**⚠** For uncompensated Baro-VNAV systems, LNAV/VNAV NA below -4°C (25°F) or above 54°C (130°F). DME/DME RNP-0.3 NA.

MISSED APPROACH: Climb to 2000 direct OXJEF and hold.

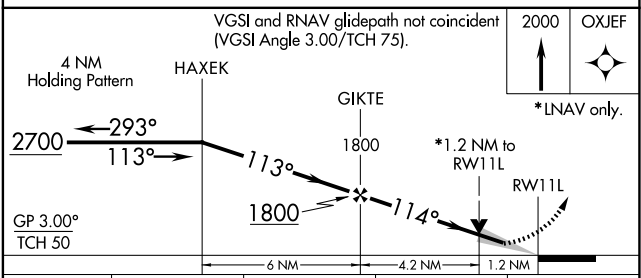
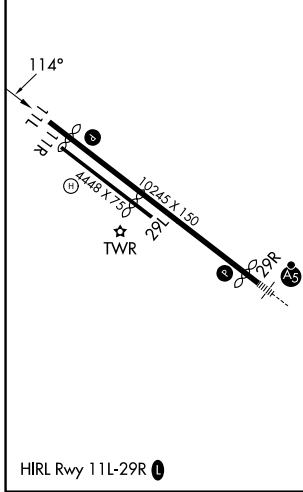
ATIS <b>118.25</b>	NORCAL APP CON <b>123.85 278.3</b> (SE-NW) <b>125.1 363.2</b> (N-SE)	STOCKTON TOWER * <b>120.3</b> (CTAF) <b>0 239.0</b>	GND CON <b>121.9</b>	UNICOM <b>122.95</b>
-----------------------	--	--	-------------------------	-------------------------



SW-2, 16 APR 2026 to 14 MAY 2026

SW-2, 16 APR 2026 to 14 MAY 2026

ELEV 33	<b>D</b>	TDZE 29
---------	----------	---------



CATEGORY	A	B	C	D
LPV DA	229-3/4		200 (200-3/4)	
LNAV/VNAV DA	471-1 1/2		442 (500-1 1/2)	
LNAV MDA	480-1	451 (500-1)	480-1 3/8	451 (500-1 3/8)
CIRCLING	500-1 467 (500-1)	540-1 507 (600-1)	640-1 3/4 607 (700-1 3/4)	640-2 607 (700-2)