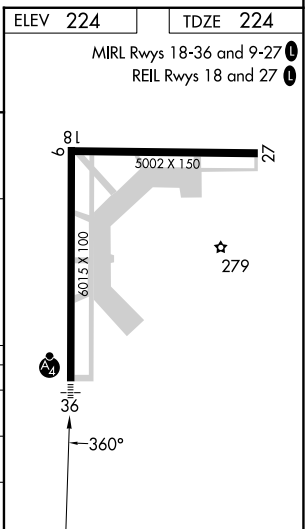
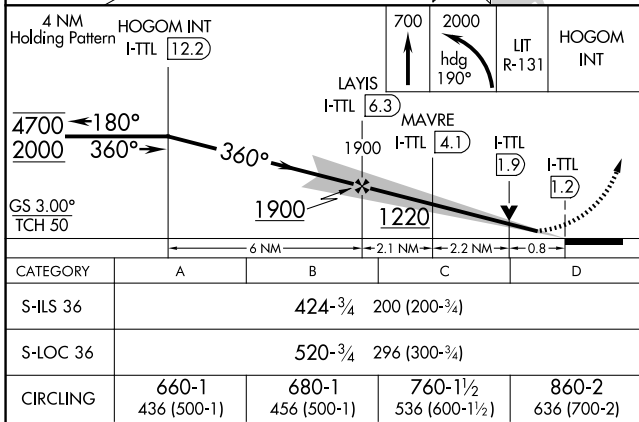
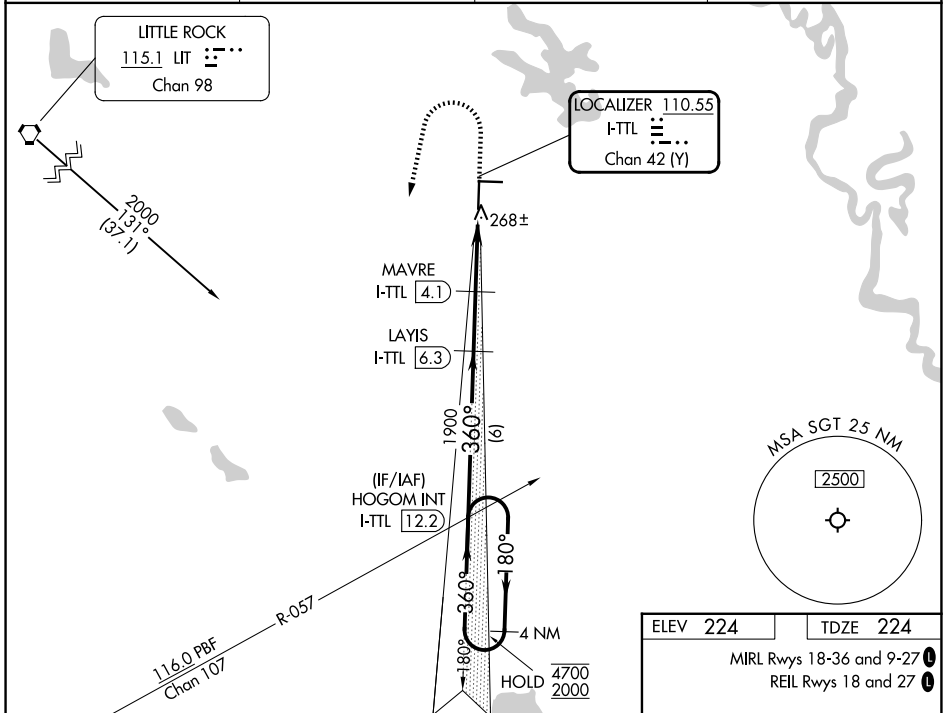


LOC/DME I-TTL 110.55	APP CRS 360°	Rwy Ldg TDZE 224	6015
Chan 42 (Y)		Apt Elev 224	

ILS or LOC RWY 36
STUTTGART MUNI CARL HUMPHREY FLD (SGT)

DME required.	MALSF	MISSED APPROACH: Climb to 700 then climbing left turn to 2000 on heading 190° and on LIT VORTAC R-131 to HOGOM INT/I-TTL 12.2 DME and hold.
Rwy 36 helicopter visibility reduction below 3/4 SM NA. Inop table does not apply to S-ILS 36 all Cats. Circling Rwy 9, 27 NA at night. For inop ALS, increase S-LOC 36 Cat C and D visibility to 7/8 SM.		

AWOS-3PT 119,025	LITTLE ROCK APP CON 135.4 353.6	CLNC DEL 123.7	UNICOM 122.8 (CTAF) 0
----------------------------	---	--------------------------	---------------------------------



SC-1, 16 APR 2026 to 14 MAY 2026

SC-1, 16 APR 2026 to 14 MAY 2026