

WAAS CH 58303 W18A	APP CRS 180°	Rwy Ldg 6015 TDZE 224 Apt Elev 224
--	------------------------	---

RNAV (GPS) RWY 18

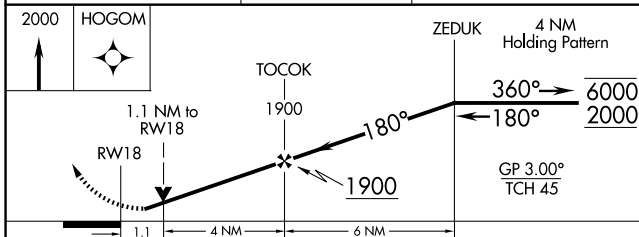
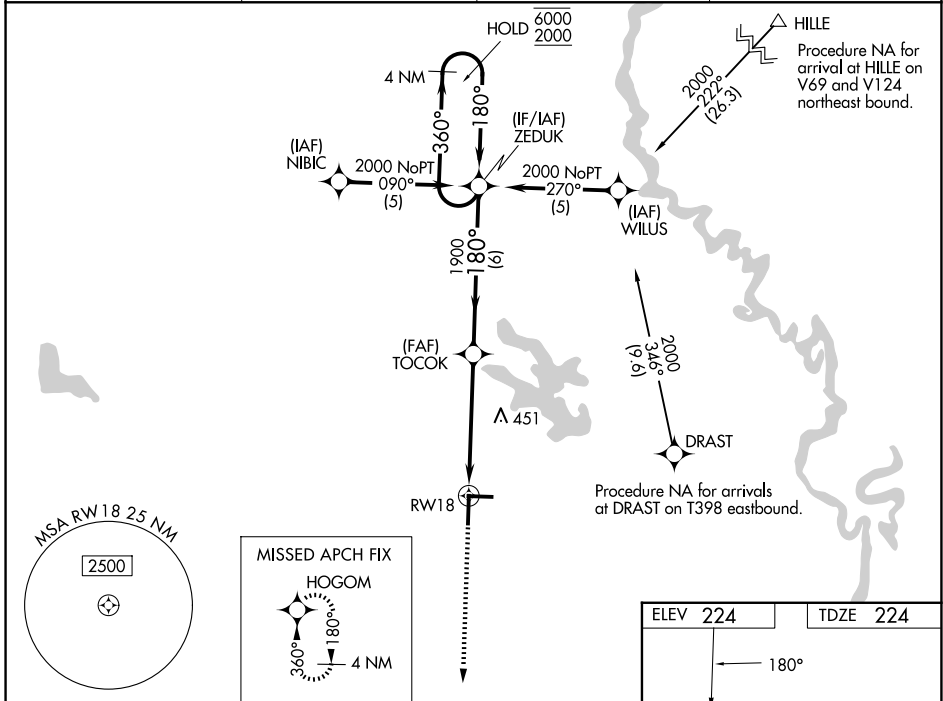
STUTTGART MUNI CARL HUMPHREY FLD (SGT)

RNP APCH - GPS.

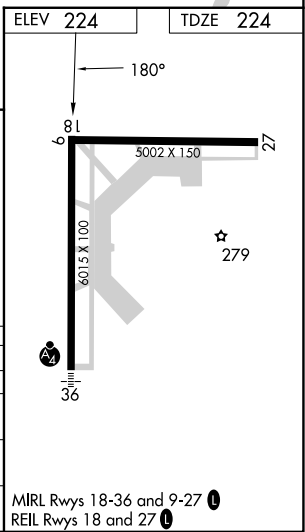
⚠ For uncompensated Baro-VNAV systems, LNAV/VNAV NA below -15°C or above 48°C. Rwy 18 helicopter visibility reduction below 3/4 SM NA.

MISSED APPROACH:
Climb to 2000 direct HOGOM and hold.

AWOS-3PT 119.025	LITTLE ROCK APP CON 135.4 353.6	CLNC DEL 123.7	UNICOM 122.8 (CTAF) 0
----------------------------	---	--------------------------	---------------------------------



CATEGORY	A	B	C	D
LPV DA	474-1 250 (300-1)			
LNAV/VNAV DA	520-7/8 296 (300-7/8)		520-1 296 (300-1)	
LNAV MDA	620-1 396 (400-1)	620-1 1/8 396 (400-1 1/8)	620-1 1/4 396 (400-1 1/4)	620-1 1/4 396 (400-1 1/4)
CIRCLING	660-1 436 (500-1)	680-1 456 (500-1)	760-1 1/2 536 (600-1 1/2)	860-2 636 (700-2)



SC-1, 16 APR 2026 to 14 MAY 2026

SC-1, 16 APR 2026 to 14 MAY 2026