

HI-ILS or LOC Z RWY 22R

LOC I-JWU 108.7	APCH CRS 223°	Rwy Idg 22R 10,014	22L 8014
		TDZE 240	235
		Arprt Elev 241	241

[USAF]

SHAW AFB (KSSC)

RADAR or DME required. RADAR required when R-6002 active.

- ▲ * When ALS inop, increase RVR to 40 and vis to ¾ mile.
- ** When ALS inop, increase vis to 1 ¼ miles.



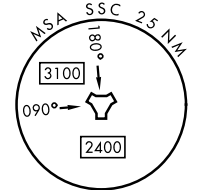
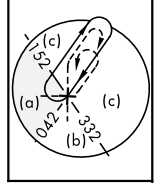
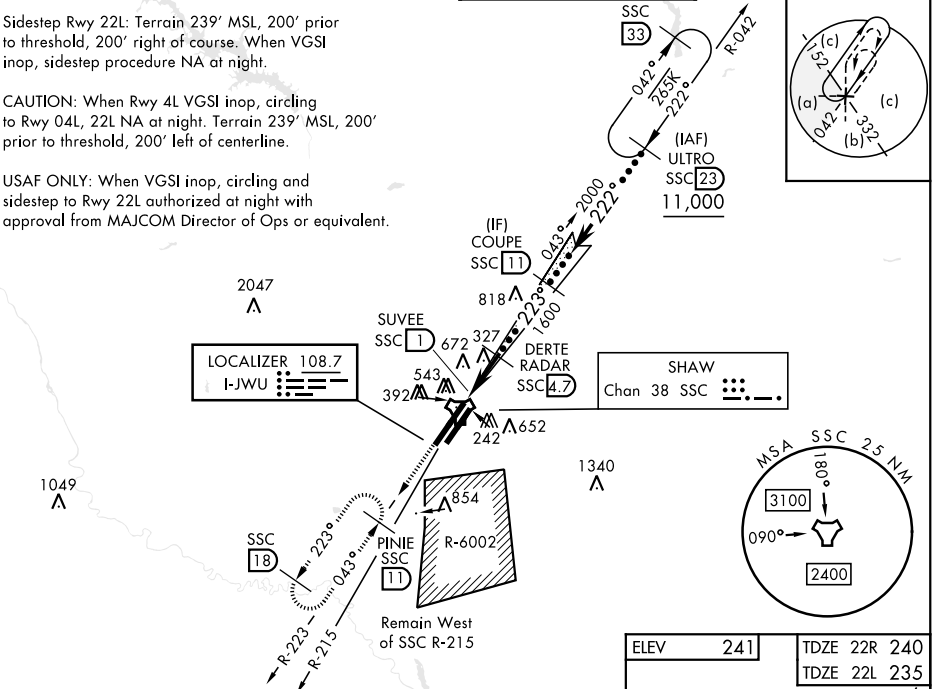
MISSED APPROACH: Climbing to 2000, intercept SSC TACAN R-223 to PINIE and hold.

ATIS ★ 132.125 270.1	APP CON ★ 125.4 318.1	TOWER ★ 126.65 254.25	GND CON 126.1 275.8
--------------------------------	---------------------------------	---------------------------------	-------------------------------

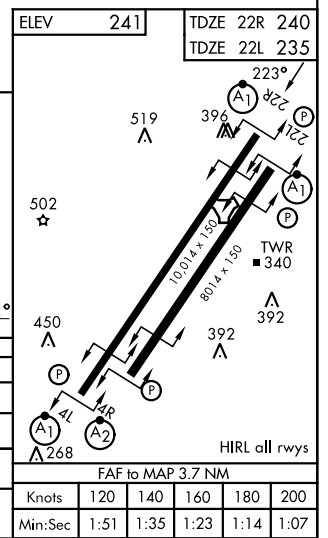
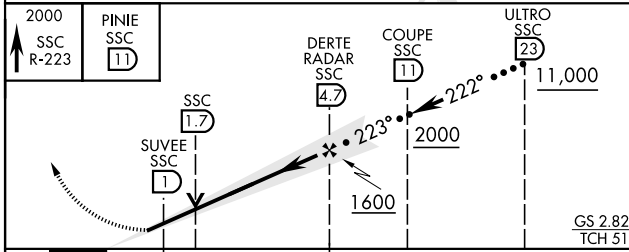
Sidestep Rwy 22L: Terrain 239' MSL, 200' prior to threshold, 200' right of course. When VGSi inop, sidestep procedure NA at night.

CAUTION: When Rwy 4L VGSi inop, circling to Rwy 04L, 22L NA at night. Terrain 239' MSL, 200' prior to threshold, 200' left of centerline.

USAF ONLY: When VGSi inop, circling and sidestep to Rwy 22L authorized at night with approval from MAJCOM Director of Ops or equivalent.



EMERG SAFE ALT 100 NM 3800



CATEGORY	C	D	E
S-ILS 22R *	440/24	200 (200-½)	
S-LOC 22R **	660/40	420 (500-¾)	
SIDESTEP ** 22L	660-1 ¼	425 (500-1 ¼)	
CIRCLING	1000-2 ¼ 759 (800-2 ¼)	1000-2 ½ 759 (800-2 ½)	1000-2 ¾ 759 (800-2 ¾)

HI-ILS or LOC Z RWY 22R

SE-2, 16 APR 2026 to 14 MAY 2026

SE-2, 16 APR 2026 to 14 MAY 2026