

HI-ILS or LOC Z RWY 4L

LOC I-SSC 110.1	APCH CRS 043°	Rwy Idg TDZE Arpt Elev	4L 10,014 240 241	4R 8014 236 241
---------------------------	-------------------------	------------------------------	---	---

[USAF]

SHAW AFB (KSSC)

RADAR or DME required. RADAR required when R-6002 active.

▼ * When ALS inop, increase vis to 1½ miles.



MISSED APPROACH: Climbing to 2000, intercept SSC TACAN R-042 to GABLE and hold.

ATIS ★ 132.125 270.1	APP CON ★ 125.4 318.1	TOWER ★ 126.65 254.25	GND CON 126.1 275.8
--------------------------------	---------------------------------	---------------------------------	-------------------------------

CAUTION: When Rwy 22L VGSI inop, circling to Rwy 22L NA at night. Terrain 239' MSL, 200' prior to threshold, 200' right of course.

USAF Only: When VGSI inop, straight-in Rwy 4L authorized at night with MAJCOM A3 approval.

▲ 1400

CAUTION: When VGSI inop, procedure NA at night.

▲ 2047

LOCALIZER 110.1
I-SSC [dots]

GABLE SSC [11]

SHAW Chan 38 SSC [dots]

EEGAL RADAR SSC [4.9]

WUXEV SSC [11]

JUMUB SSC [23]

CAVEG SSC [1.8]

SSC [33]

SSC [30]

SSC [33]

SSC [33]

SSC [33]

SSC [33]

SSC [33]

SSC [33]

SSC [33]

SSC [33]

SSC [33]

SSC [33]

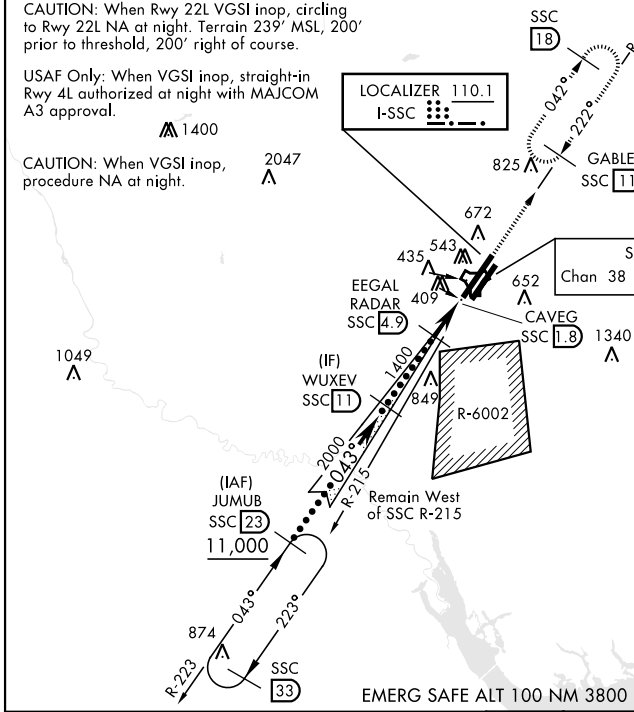
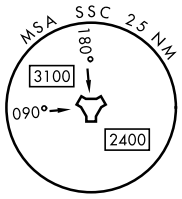
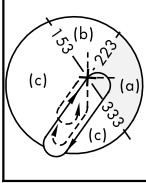
SSC [33]

SSC [33]

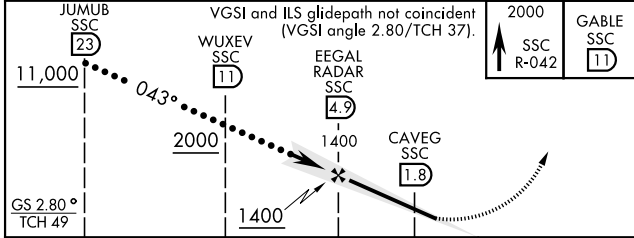
SSC [33]

SSC [33]

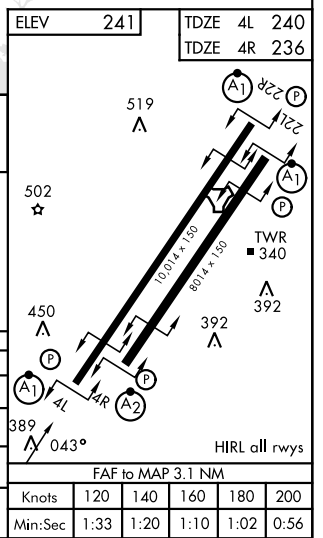
SSC [33]



EMERG SAFE ALT 100 NM 3800



CATEGORY	C	D	E
S-ILS 4L *	490/50	250	(300-1)
S-LOC 4L *	780/55	540	(600-1)
SIDESTEP * 4R	780-1 3/8	544	(600-1 3/8)
CIRCLING	1000-2 1/4 759 (800-2 1/4)	1000-2 1/2 759 (800-2 1/2)	1000-2 3/4 759 (800-2 3/4)



HI-ILS or LOC Z RWY 4L

SE-2, 16 APR 2026 to 14 MAY 2026

SE-2, 16 APR 2026 to 14 MAY 2026