

SUMTER, SOUTH CAROLINA

HI-TACAN Z RWY 22R

TACAN SSC Chan 38	APCH CRS 222°	22R Rwy ldg 10,014 TDZE 240 Arpt Elev 241	22L 8014 235 241
-----------------------------	-------------------------	---	--

[USAF]

SHAW AFB (KSSC)

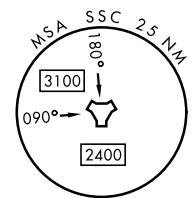
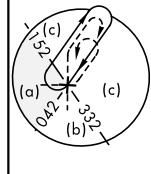
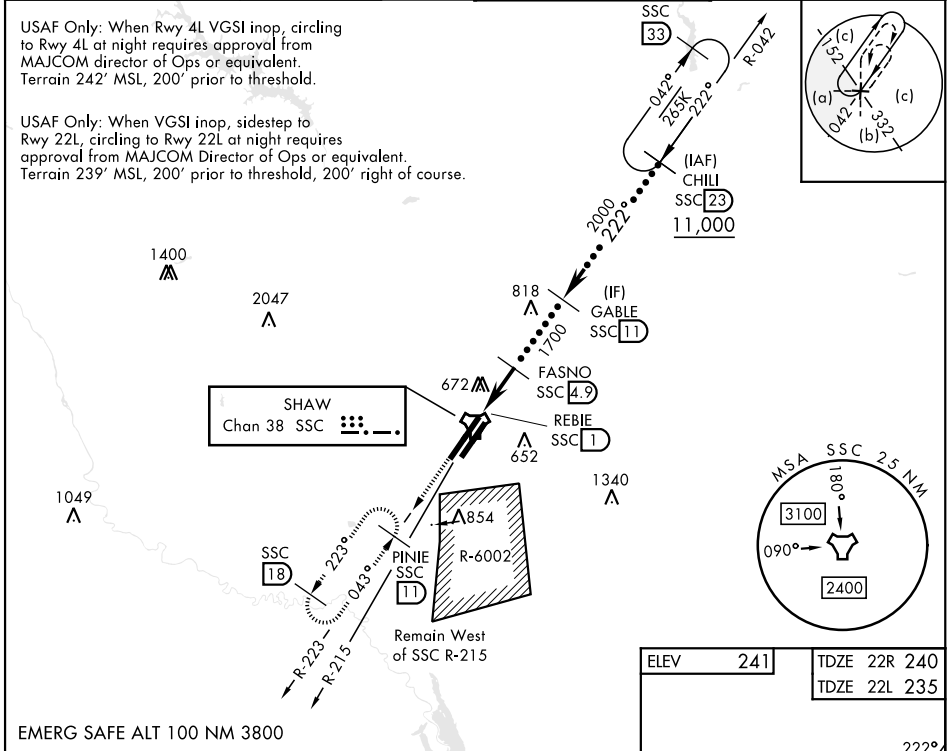
RADAR required when R-6002 active.

ALSF-1

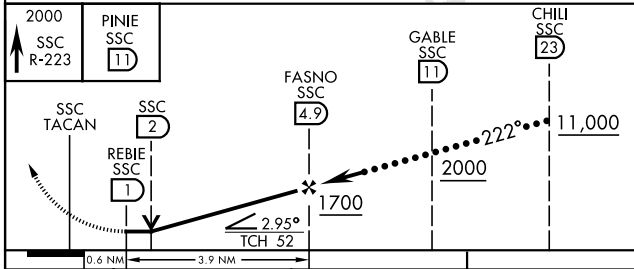
MISSED APPROACH: Climbing to 2000, intercept SSC TACAN R-223 to PINIE and hold.

* When ALS inop, increase vis to 1½ miles.
 ** When ALS inop, increase vis to 1¾ miles.

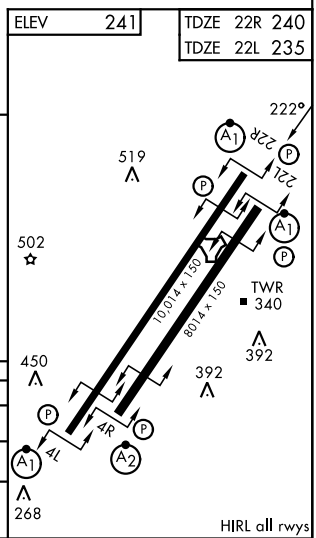
ATIS ★ 132.125 270.1	APP CON ★ 125.4 318.1	TOWER ★ 126.65 254.25	GND CON 126.1 275.8
--------------------------------	---------------------------------	---------------------------------	-------------------------------



EMERG SAFE ALT 100 NM 3800



CATEGORY	C	D	E
S-22R*	760/55	520 (600-1)	
SIDESTEP 22L**	760/55	505 (600-1)	
CIRCLING	1000-2¼ 759 (800-2¼)	1000-2½ 759 (800-2½)	1000-2¾ 759 (800-2¾)



Amdt 1 07NOV19

HI-TACAN Z RWY 22R

SE-2, 16 APR 2026 to 14 MAY 2026

SE-2, 16 APR 2026 to 14 MAY 2026