

HI-TACAN Z RWY 4L

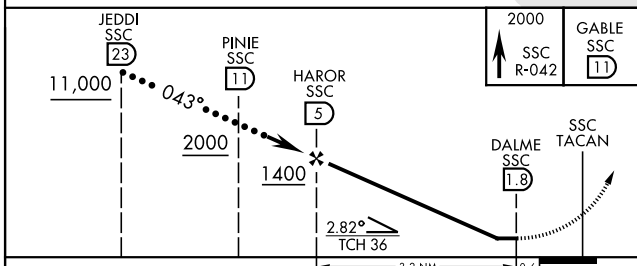
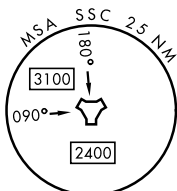
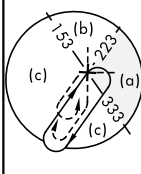
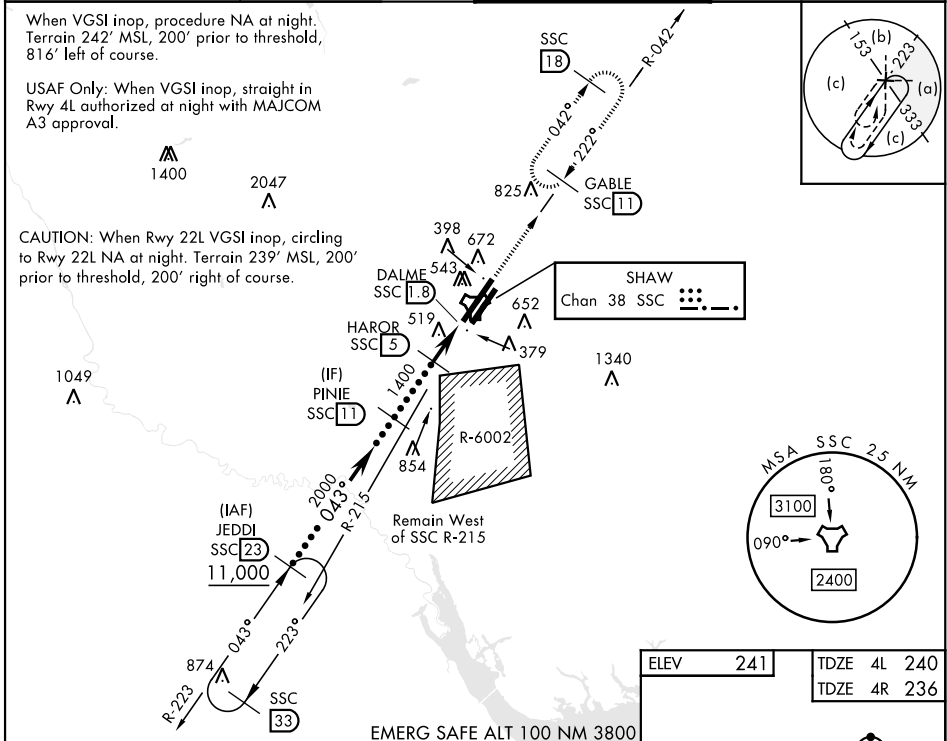
TACAN SSC Chan 38	APCH CRS 043°	Rwy Idg TDZE 240 Arprt Elev 241	4L 10,014	4R 8014 236 241	[USAF]	SHAW AFB (KSSC)
-----------------------------	-------------------------	---	---------------------	---	--------	-----------------

RADAR required when R-6002 active.

ALSF-1

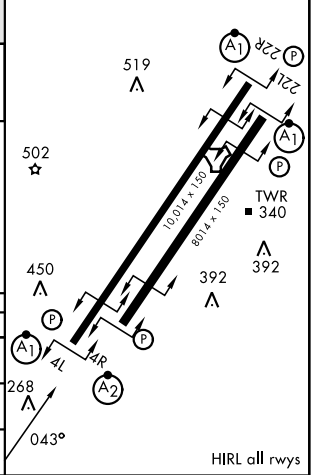
MISSED APPROACH: Climbing to 2000, intercept SSC TACAN R-042 to GABLE and hold.

ATIS★ 132.125 270.1	APP CON★ 125.4 318.1	TOWER★ 126.65 254.25	GND CON 126.1 275.8
-------------------------------	--------------------------------	--------------------------------	-------------------------------



CATEGORY	C	D	E
S-4L*	800/60	560 (600-1½)	
SIDESTEP 4R*	800-1½	564 (600-1½)	
CIRCLING	1000-2¼ 759 (800-2¼)	1000-2½ 759 (800-2½)	1000-2¾ 759 (800-2¾)

ELEV 241	TDZE 4L 240	TDZE 4R 236
----------	-------------	-------------



HI-TACAN Z RWY 4L

SE-2, 16 APR 2026 to 14 MAY 2026

SE-2, 16 APR 2026 to 14 MAY 2026