

SUMTER, SOUTH CAROLINA

ILS or LOC Y RWY 22R

| | | | |
|---------------------------|-------------------------|---------------------------------|--------------------|
| LOC I-JWU 108.7 | APCH CRS 223° | Rwy Ldg 22R 10,014 | 22L 8014 |
| | | TDZE 240 | 235 |
| | | Arprt Elev 241 | 241 |

[USAF]

SHAW AFB (KSSC)

RADAR or DME required

▼* When ALS inop, increase RVR to 40 and vis to ¾ mile.
** When ALS inop, increase CAT AB RVR to 55 and vis to 1 mile, CAT CDE vis to 1¼ miles.

ALSF-1
MISSED APPROACH: Climbing to 2000, intercept SSC TACAN R-223 to PINIE and hold.

| | | | |
|-------------------------------|--------------------------------|--------------------------------|-------------------------------|
| ATIS★ 132.125 270.1 | APP CON★ 125.4 318.1 | TOWER★ 126.65 254.25 | GND CON 126.1 275.8 |
|-------------------------------|--------------------------------|--------------------------------|-------------------------------|

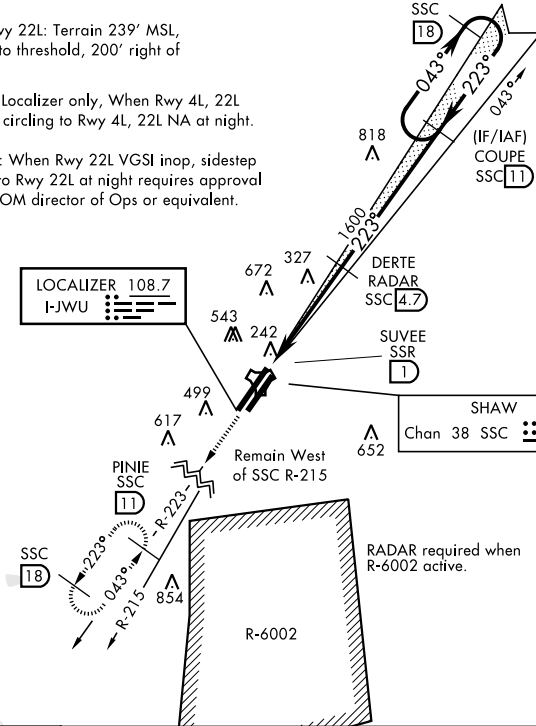
Sidestep Rwy 22L: Terrain 239' MSL, 200' prior to threshold, 200' right of course.

CAUTION: Localizer only, When Rwy 4L, 22L VGSi inop, circling to Rwy 4L, 22L NA at night.

USAF Only: When Rwy 22L VGSi inop, sidestep or circling to Rwy 22L at night requires approval from MAJCOM director of Ops or equivalent.

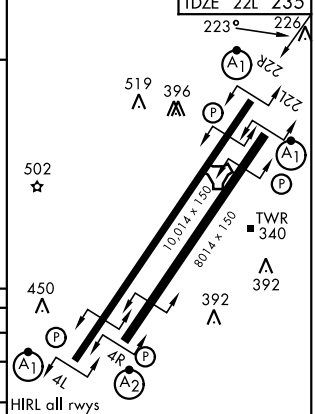
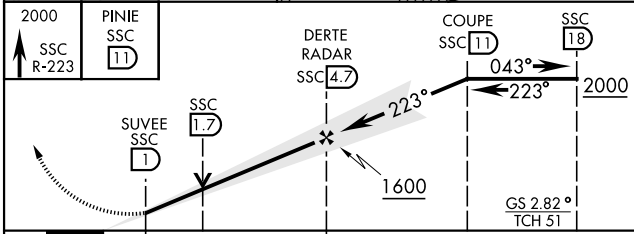
▲ 1573

LOCALIZER 108.7
I-JWU



EMERG SAFE ALT 100 NM 3800

| | |
|----------|--------------|
| ELEV 241 | TDZE 22R 240 |
| | TDZE 22L 235 |



| CATEGORY | A | B | C | D | E |
|-----------------|----------------------|----------------------|-------------------------|-------------------------|-------------------------|
| S-ILS 22R* | 440/24 | | 200 | (200-½) | |
| S-LOC 22R** | 660/24 | 420 (500-½) | 660/40 | 420 (500-¾) | |
| SIDESTEP ** 22L | 660-1 | 425 (500-1) | 660-1¼ | 425 (500-1¼) | |
| CIRCLING | 820-1 579 (600-1) | 880-1 639 (700-1) | 1000-2¼ 759 (800-2¼) | 1000-2½ 759 (800-2½) | 1000-2¾ 759 (800-2¾) |

| | | | | | |
|-------------------|------|------|------|------|------|
| HIRL all rwys | | | | | |
| FAF to MAP 3.7 NM | | | | | |
| Knots | 60 | 90 | 120 | 150 | 180 |
| Min:Sec | 3:42 | 2:28 | 1:51 | 1:29 | 1:14 |

SUMTER, SOUTH CAROLINA
Amdt 1 10OCT19

33° 58' N-80° 28' W

SHAW AFB (KSSC)

ILS or LOC Y RWY 22R

SE-2, 16 APR 2026 to 14 MAY 2026

SE-2, 16 APR 2026 to 14 MAY 2026