

SUMTER, SOUTH CAROLINA

ILS or LOC Y RWY 4L

LOC I-SSC 110.1	APCH CRS 043°	Rwy Idg TDZE Arprt Elev	4L 10,014 240 241	4R 8014 236 241
---------------------------	-------------------------	-------------------------------	---	---

[USAF]

SHAW AFB (KSSC)

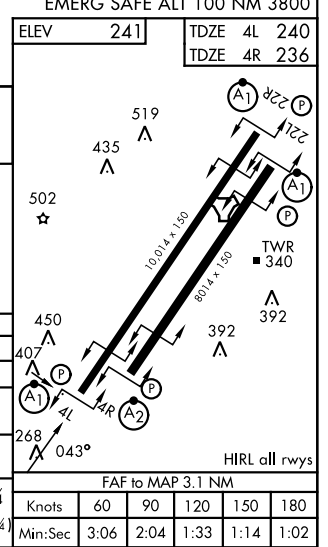
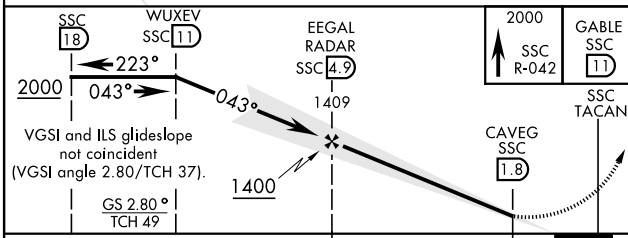
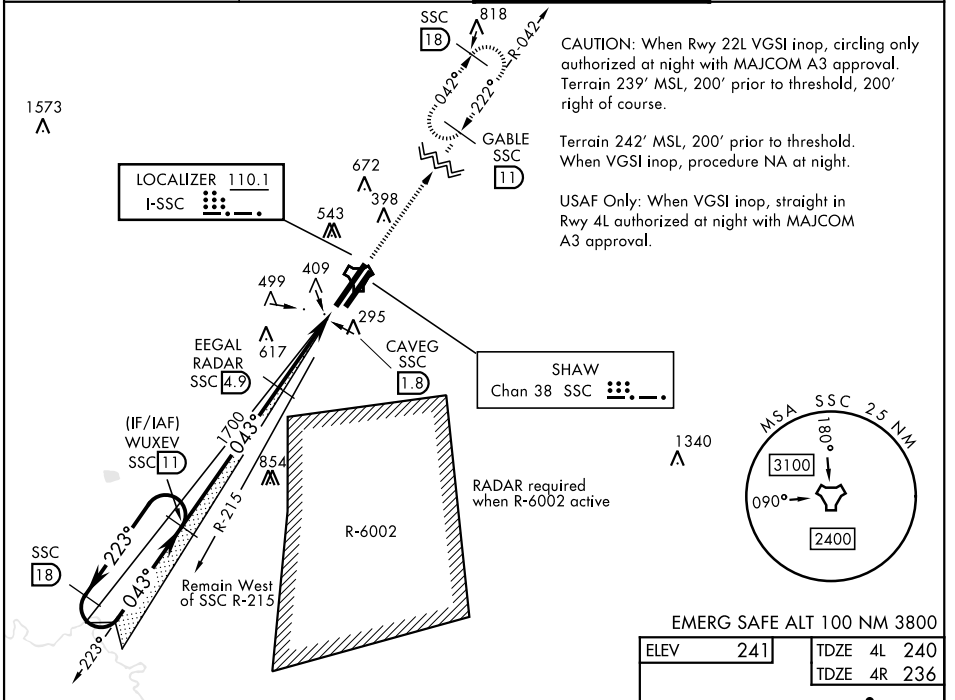
RADAR or DME required

▲ * When ALS inop, increase CAT AB RVR to 55 and vis to 1 mile, CAT CDE vis to 1½ miles.

ALSF-1
A1

MISSED APPROACH: Climbing to 2000, intercept SSC TACAN R-042 to GABLE and hold.

ATIS ★ 132.125 270.1	APP CON ★ 125.4 318.1	TOWER ★ 126.65 254.25	GND CON 126.1 275.8
--------------------------------	---------------------------------	---------------------------------	-------------------------------



CATEGORY	A	B	C	D	E
S-ILS 4L		490/50	250	(300-1)	
S-LOC 4L *	780/50	540 (600-1)	780/55	540 (600-1)	
SIDESTEP 4R *	780/50	544 (600-¾)	780-1¾	544 (600-1¾)	
CIRCLING	820-1	880-1	1000-2¼	1000-2½	1000-2¾
	579 (600-1)	639 (700-1)	759 (800-2¼)	759 (800-2½)	759 (800-2¾)

SUMTER, SOUTH CAROLINA

33° 58' N-80° 28' W

SHAW AFB (KSSC)

Amdt 1 10OCT19

ILS or LOC Y RWY 4L

SE-2, 16 APR 2026 to 14 MAY 2026

SE-2, 16 APR 2026 to 14 MAY 2026