

LOC/DME I-MNQ 110.35 Chan 40 (Y)	APP CRS 142°	Rwy Ldg 9197 TDZE 6 Apt Elev 37
---	------------------------	--

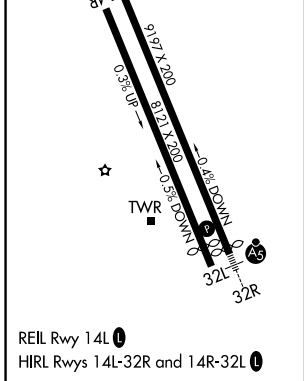
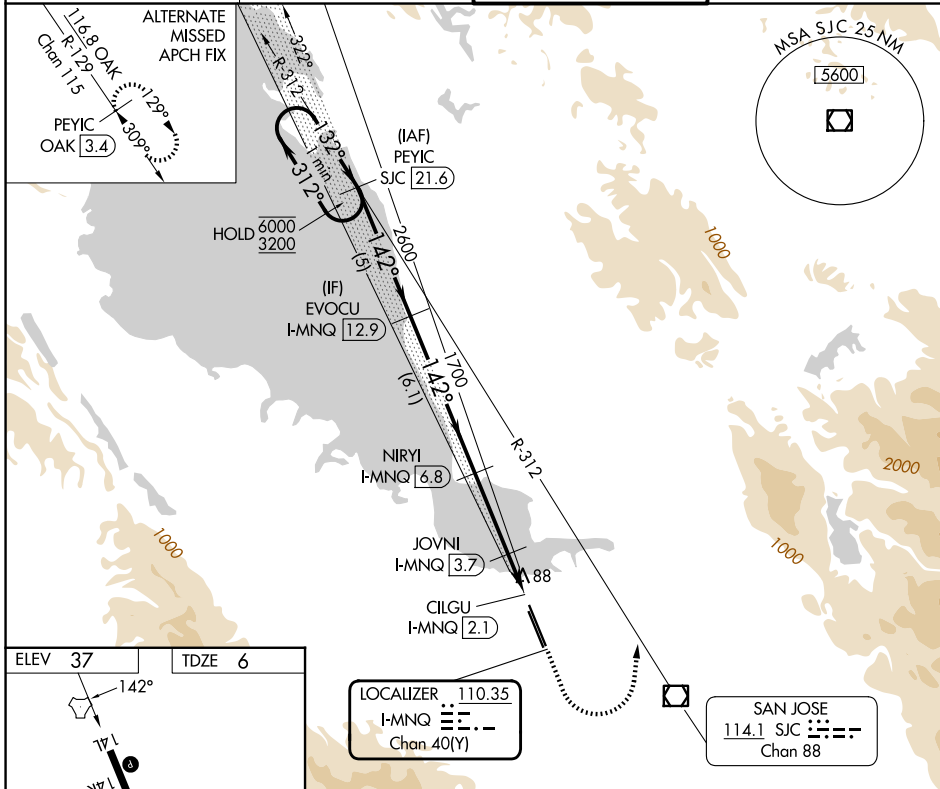
LOC RWY 14L

MOFFETT FEDERAL AIRFIELD (NUQ)

DME required. RADAR required for procedure entry.

MISSED APPROACH: Climb to 500 then climbing left turn to 3200 on heading 350° and SJC VOR/DME R-312 to PEYIC/SJC 21.6 DME and hold.

ATIS 124.175 283.0	NORCAL APP CON 120.1 290.25	MOFFETT TOWER★ 119.55 (CTAF) 259.65	GND CON 121.85 278.95
------------------------------	---------------------------------------	---	---------------------------------



One Minute Holding Pattern	PEYIC SJC 21.6	EVOCU I-MNQ 12.9	NIRYI I-MNQ 6.8	JOVNI I-MNQ 3.7	CILGU I-MNQ 2.1	PEYIC SJC 21.6
6000 ← 312°	3200 ← 132°	2600 ← 142°	1700	700	320	500
5 NM	6.1 NM	3.1 NM	1.1	0.5	0.4	
CATEGORY	A	B	C	D		
S-LOC 14L	360-1 354 (400-1)					
CIRCLING	540-1 503 (600-1)	600-1 563 (600-1)	620-1½ 583 (600-1½)	780-2½ 743 (800-2½)		

SW-2, 16 APR 2026 to 14 MAY 2026

SW-2, 16 APR 2026 to 14 MAY 2026