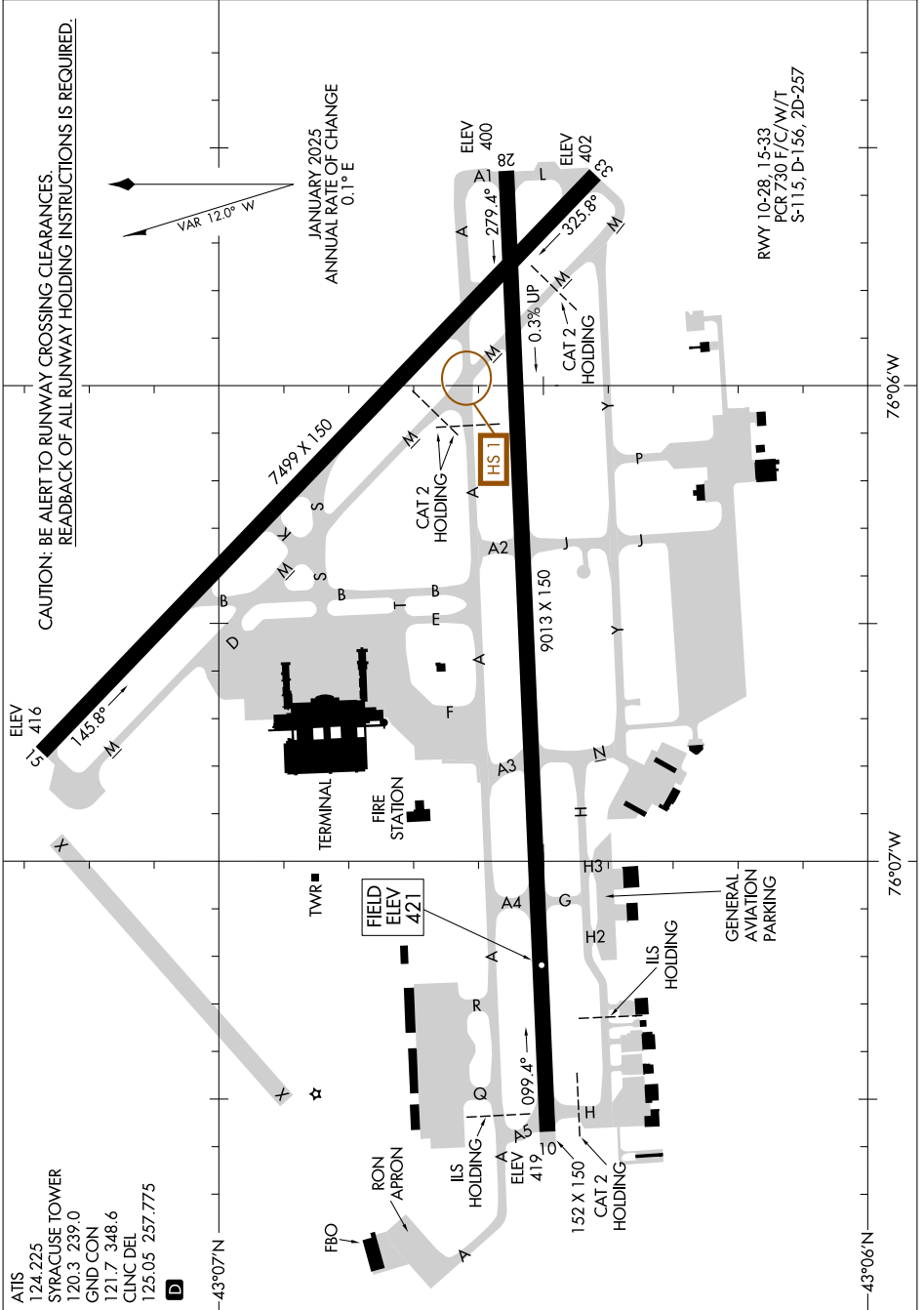


# AIRPORT DIAGRAM

AL-411 (FAA)

SYRACUSE HANCOCK INTL (SYR)  
SYRACUSE, NEW YORK

NE-2, 16 APR 2026 to 14 MAY 2026



NE-2, 16 APR 2026 to 14 MAY 2026

# AIRPORT DIAGRAM

SYRACUSE, NEW YORK  
SYRACUSE HANCOCK INTL (SYR)