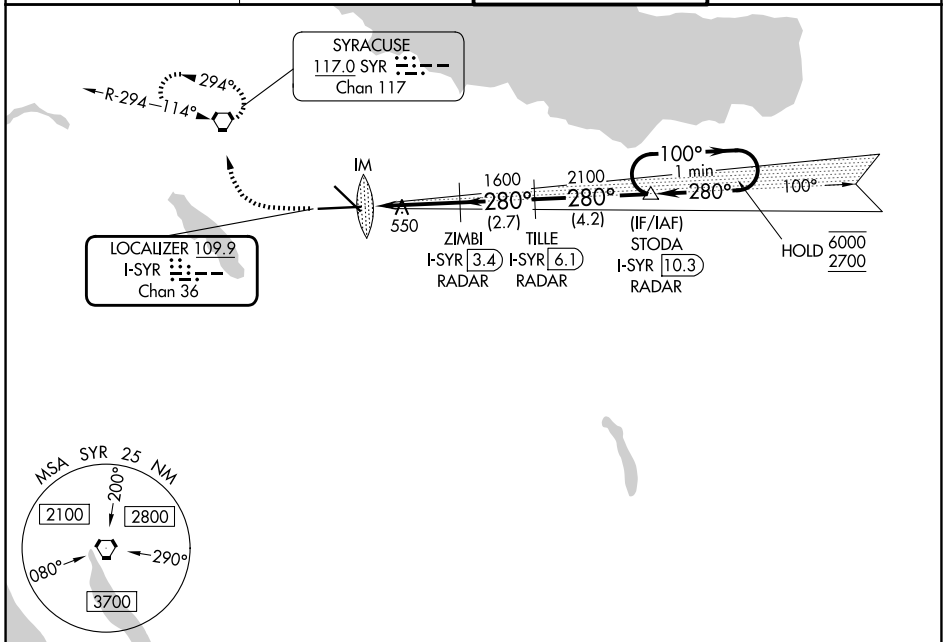


LOC/DME I-SYR 109.9 Chan 36	APP CRS 280°	Rwy Ldg 9013 TDZE 413 Apt Elev 421
---	------------------------	---

ILS RWY 28 (CAT II)
SYRACUSE HANCOCK INTL (SYR)

DME or RADAR required.	ALSIF-2	MISSED APPROACH: Climb to 1100 then climbing right turn to 3000 direct SYR VORTAC and hold, continue climb-in-hold to 3000.
▼ RVR 1000 authorized with specific OPSEC, MSPEC, or LOA approval and use of autoland or HUD to touchdown.		

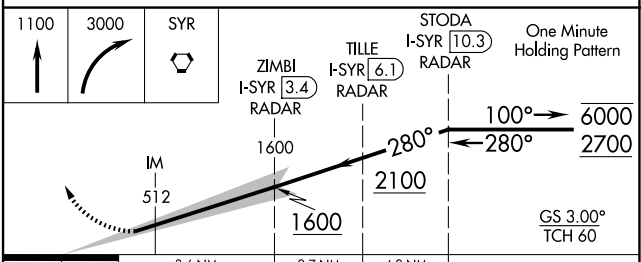
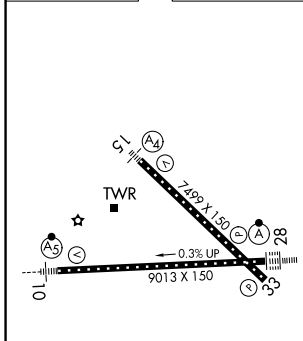
ATIS 124.225	SYRACUSE APP CON 126.125 269.125	SYRACUSE TOWER 120.3 239.0	GND CON 121.7 348.6
------------------------	--	--------------------------------------	-------------------------------



NE-2, 16 APR 2026 to 14 MAY 2026

NE-2, 16 APR 2026 to 14 MAY 2026

ELEV 421	D	TDZE 413
----------	----------	----------



CATEGORY	A	B	C	D
S-ILS 28	RA 100/12		100 DA	513

CATEGORY II ILS - SPECIAL AIRCREW & AIRCRAFT CERTIFICATION REQUIRED

TDZ/CL Rwy 28
HIRL Rwys 10-28 and 15-33