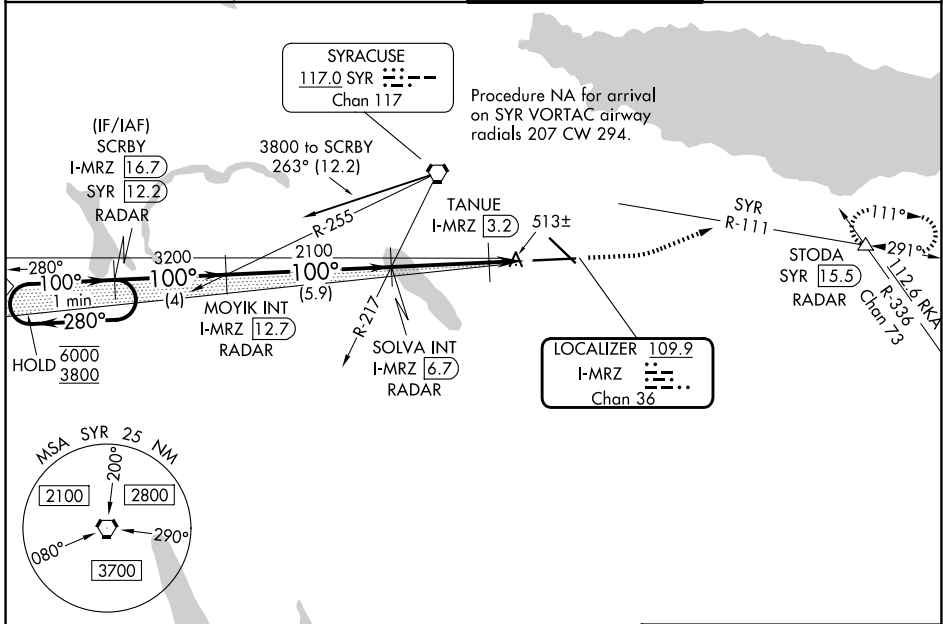


LOC/DME I-MRZ 109.9 Chan 36	APP CRS 100°	Rwy Ldg TDZE Apt Elev	9013 421 421
--	------------------------	-----------------------------	---

ILS or LOC RWY 10

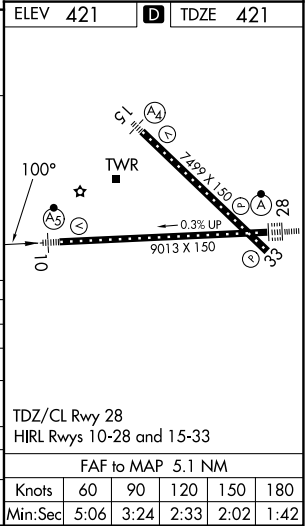
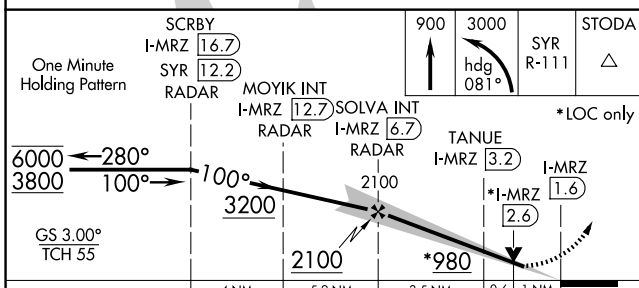
SYRACUSE HANCOCK INTL (SYR)

DME or RADAR required.		MALSR 	MISSED APPROACH: Climb to 900 then climbing left turn to 3000 on heading 081° and on SYR VORTAC R-111 to STODA INT/ SYR VORTAC 15.5 DME/RADAR and hold.		
▼ TANUE fix minimums, for inoperative ALS, increase S-LOC 10 ▲ Cats C and D visibility to RVR 5500. **RVR 1800 authorized with use of FD or AP or HUD to DA.		ATIS 124.225	SYRACUSE APP CON 126.125 269.125	SYRACUSE TOWER 120.3 239.0	GND CON 121.7 348.6



NE-2, 16 APR 2026 to 14 MAY 2026

NE-2, 16 APR 2026 to 14 MAY 2026



CATEGORY	A	B	C	D
S-ILS 10**	621/24 200 (200-1/2)			
S-LOC 10	980/24	559 (600-1/2)	980/60	559 (600-1 1/4)
CIRCLING	980-1	559 (600-1)	1020-1 1/8 599 (600-1 1/2)	1180-2 1/2 759 (800-2 1/2)
TANUE FIX MINIMUMS (DME REQUIRED)				
S-LOC 10	780/24	359 (400-1/2)	780/30	359 (400-3/4)
CIRCLING	900-1 479 (500-1)	920-1 499 (500-1)	1020-1 1/2 599 (600-1 1/2)	1180-2 1/2 759 (800-2 1/2)