

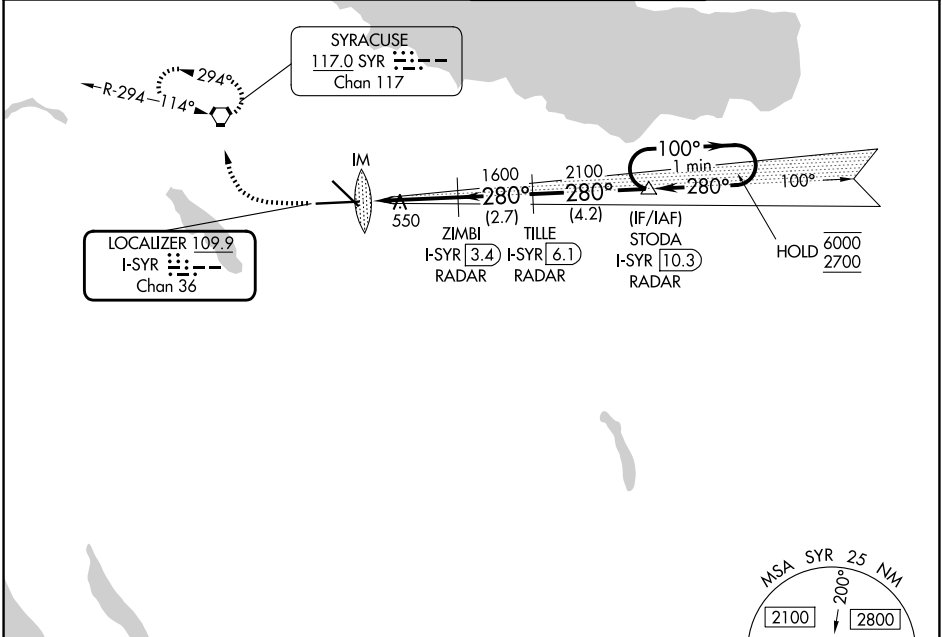
LOC/DME I-SYR 109.9 Chan 36	APP CRS 280°	Rwy Ldg TDZE Apt Elev	9013 413 421
---	------------------------	-----------------------------	---

ILS or LOC RWY 28

SYRACUSE HANCOCK INTL (SYR)

DME or RADAR required.	ALSF-2	MISSED APPROACH: Climb to 1100 then climbing right turn to 3000 direct SYR VORTAC and hold, continue climb-in-hold to 3000.
------------------------	--------	---

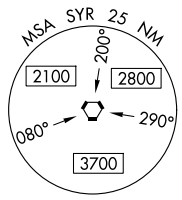
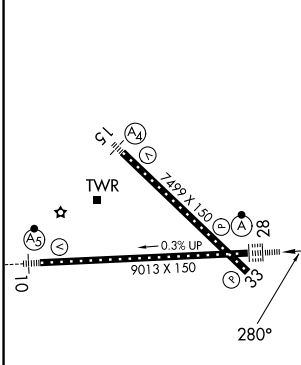
ATIS 124.225	SYRACUSE APP CON 126.125 269.125	SYRACUSE TOWER 120.3 239.0	GND CON 121.7 348.6
------------------------	--	--------------------------------------	-------------------------------



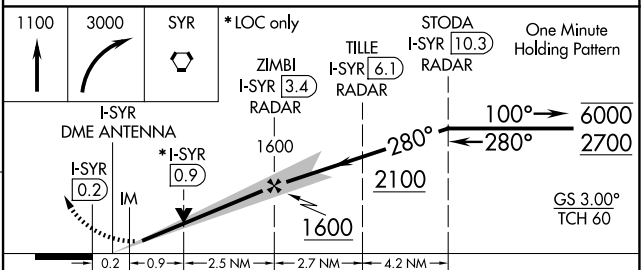
NE-2, 16 APR 2026 to 14 MAY 2026

NE-2, 16 APR 2026 to 14 MAY 2026

ELEV 421	D	TDZE 413
----------	----------	----------



TDZ/CL Rwy 28	HIRL Rwys 10-28 and 15-33				
FAF to MAP 3.6 NM					
Knots	60	90	120	150	180
Min:Sec	3:36	2:24	1:48	1:26	1:12



CATEGORY	A	B	C	D
S-ILS 28	613/18 200 (200-½)			
S-LOC 28	800/24	387 (400-½)	800/35	387 (400-¾)
CIRCLING	900-1 479 (500-1)	920-1 499 (500-1)	1020-1½ 599 (600-1½)	1180-2½ 759 (800-2½)