

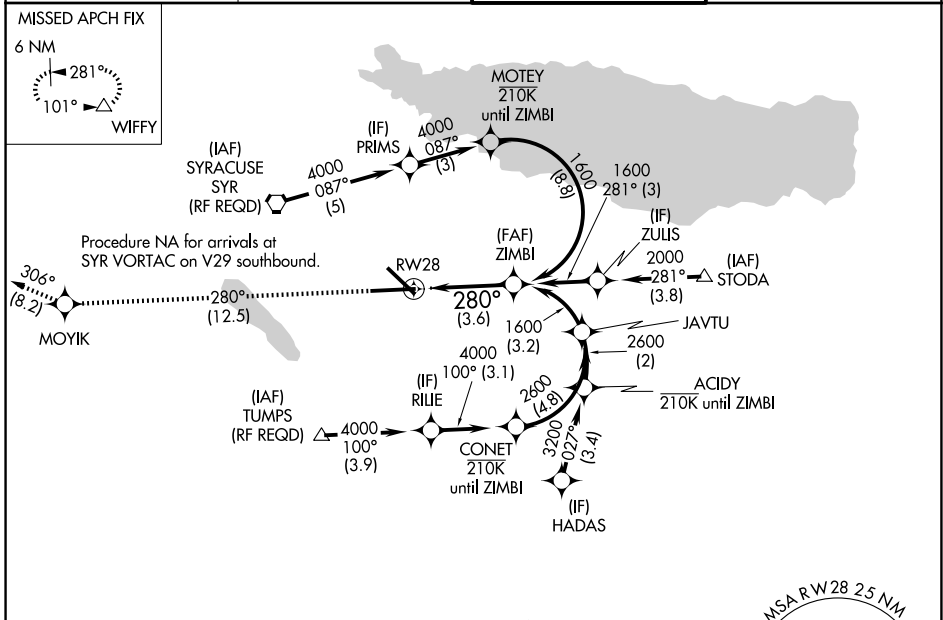
APP CRS	Rwy Ldg	9013
280°	TDZE	413
	Apt Elev	421

RNAV (RNP) Y RWY 28

SYRACUSE HANCOCK INTL (SYR)

RNP AR APCH.	ALSF-2	MISSED APPROACH: Climb to 3000 on track 280° to MOYIK and on track 306° to WIFFY and hold.
<p>▼ For uncompensated Baro-VNAV systems, procedure NA below -18°C or above 54°C. For inop ALS, increase RNP 0.15 all Cats visibility to 1½. For inop ALS, increase RNP 0.30 all Cats visibility to 1½.</p>		

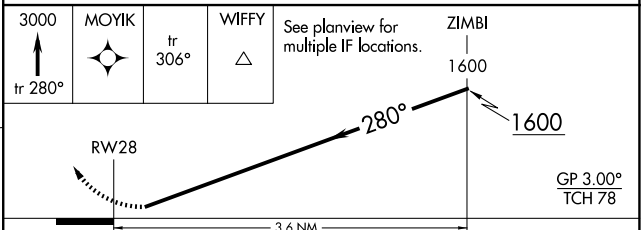
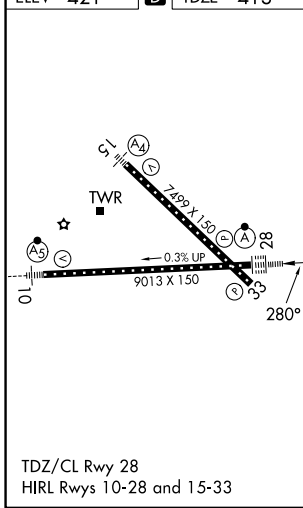
ATIS 124.225	SYRACUSE APP CON 126.125 269.125	SYRACUSE TOWER 120.3 239.0	GND CON 121.7 348.6
------------------------	--	--------------------------------------	-------------------------------



NE-2, 16 APR 2026 to 14 MAY 2026

NE-2, 16 APR 2026 to 14 MAY 2026

ELEV 421	D	TDZE 413
----------	----------	----------



CATEGORY	A	B	C	D
RNP 0.15 DA		862/55	449 (500-1)	
RNP 0.30 DA		957-1½	544 (600-1½)	

AUTHORIZATION REQUIRED