

WAAS CH <b>40017</b> <b>W10A</b>	APP CRS <b>100°</b>	Rwy Ldg TDZE Apt Elev	<b>9013</b> <b>421</b> <b>421</b>
--	------------------------	-----------------------------	---

# RNAV (GPS) Z RWY 10

SYRACUSE HANCOCK INTL (SYR)

RNP APCH - GPS.

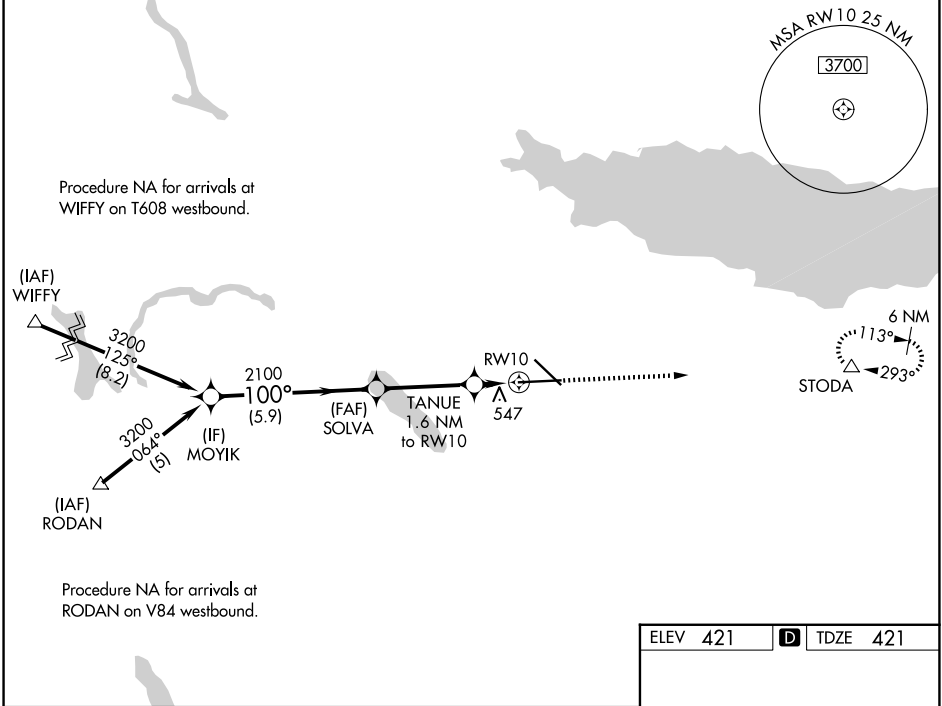
**⚠** For uncompensated Baro-VNAV systems, LNAV/VNAV NA below -19°C or above 54°C. For inop ALS, increase LNAV Cats C/D visibility to RVR 5500. # RVR 1800 authorized with use of FD or AP or HUD to DA.

MALSR



MISSED APPROACH: Climb to 3200 direct STODA and hold, continue climb-in-hold to 3200.

ATIS <b>124.225</b>	SYRACUSE APP CON <b>126.125 269.125</b>	SYRACUSE TOWER <b>120.3 239.0</b>	GND CON <b>121.7 348.6</b>
------------------------	--	--------------------------------------	-------------------------------

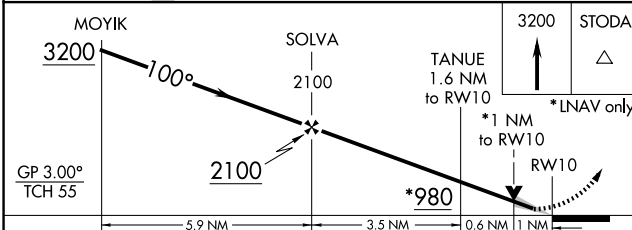


Procedure NA for arrivals at WIFFY on T608 westbound.

Procedure NA for arrivals at RODAN on V84 westbound.

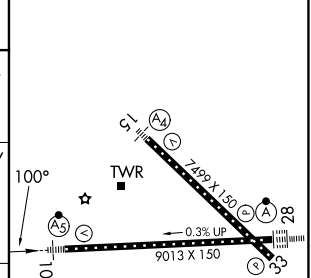
NE-2, 16 APR 2026 to 14 MAY 2026

NE-2, 16 APR 2026 to 14 MAY 2026



ELEV 421	<b>D</b> TDZE 421
----------	-------------------

CATEGORY	A	B	C	D
LPV DA#		621/24	200 (200-½)	
LNAV/VNAV DA		846/40	425 (500-¾)	
LNAV MDA	800/24	379 (400-½)	800/35	379 (400-¾)
CIRCLING	900-1 479 (500-1)	920-1 499 (500-1)	1020-1½ 599 (600-1½)	1180-2½ 759 (800-2½)



TDZ/CL Rwy 28 HIRL Rwy 10-28 and 15-33
---