

WAAS CH 45517 W28A	APP CRS 281°	Rwy Ldg TDZE Apt Elev	9013 413 421
--	------------------------	-----------------------------	---

RNAV (GPS) Z RWY 28

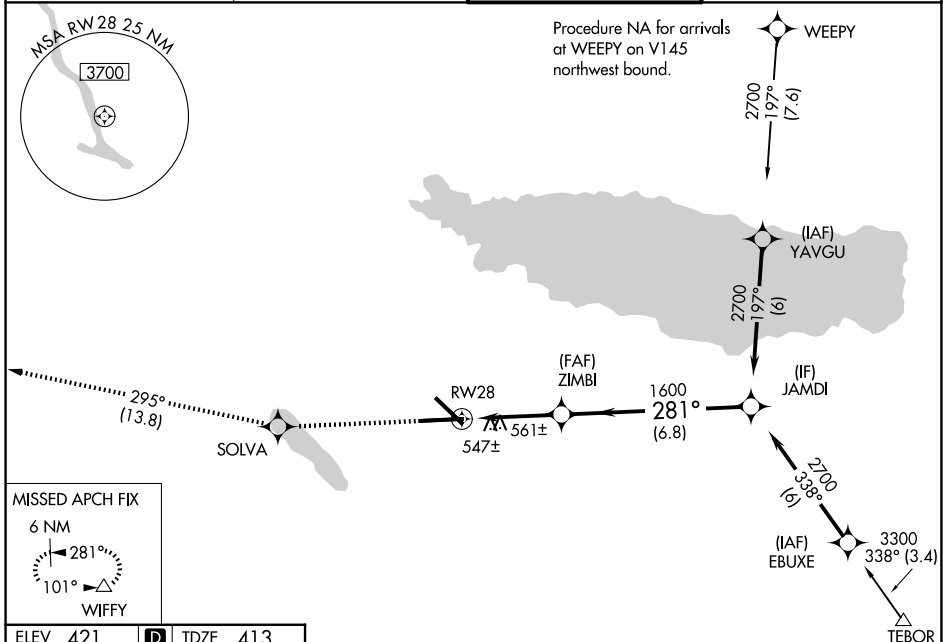
SYRACUSE HANCOCK INTL (SYR)

▽ For uncompensated Baro-VNAV systems, LNAV/VNAV NA below -21°C (-6°F) or above 54°C (130°F). DME/DME RNP-0.3 NA.
▲ For inop ALSF-2, increase LNAV Cats C/D visibility to 1½ mile.

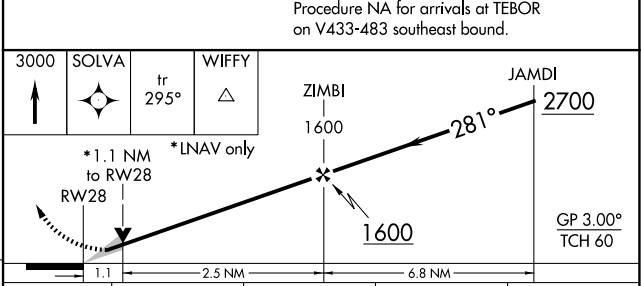
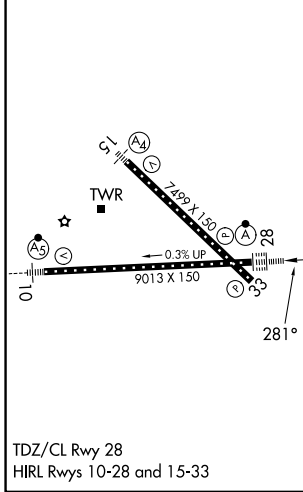
ALSF-2

MISSED APPROACH: Climb to 3000 direct SOLVA and on track 295° to WIFFY and hold.

ATIS 124.225	SYRACUSE APP CON 126.125 269.125	SYRACUSE TOWER 120.3 239.0	GND CON 121.7 348.6
------------------------	--	--------------------------------------	-------------------------------



ELEV 421	D	TDZE 413
----------	----------	----------



CATEGORY	A	B	C	D
LPV DA	613/18 200 (200-½)			
LNAV/VNAV DA	850/50 437 (500-1)			
LNAV MDA	820/24	407 (400-½)	820/40	407 (400-¾)
CIRCLING	900-1 479 (500-1)	920-1 499 (500-1)	1020-1½ 599 (600-1½)	1180-2½ 759 (800-2½)

NE-2, 16 APR 2026 to 14 MAY 2026

NE-2, 16 APR 2026 to 14 MAY 2026