

TACOMA, WASHINGTON

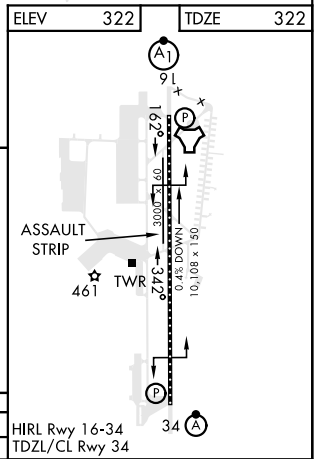
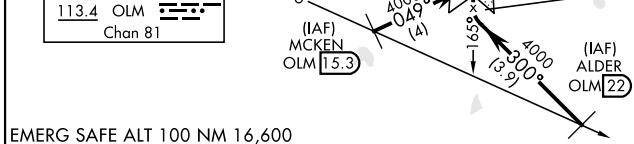
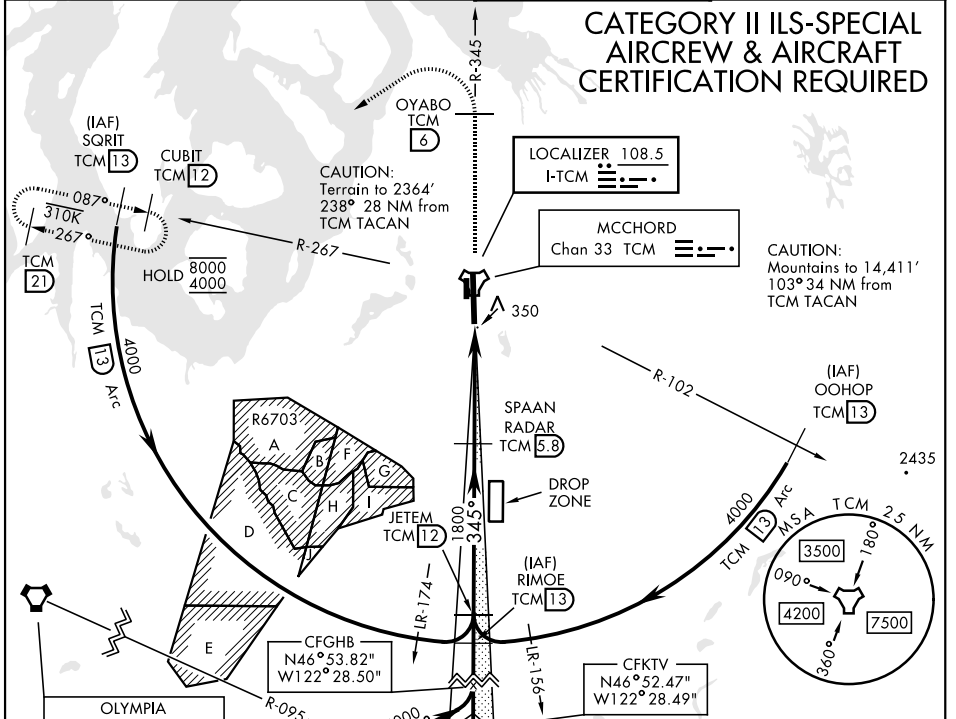
# ILS RWY 34 (CAT II)

LOC I-TCM <b>108.5</b>	APCH CRS <b>345°</b>	Rwy Idg TDZE Arprt Elev <b>10,108</b> <b>322</b> <b>322</b>
---------------------------	-------------------------	--

[USAF] MCCHORD FLD (JOINT BASE LEWIS MCCHORD) (KTCM)

**ALSF-2** MISSED APPROACH: Climb to 4000 on TCM TACAN R-345 to OYABO, then turn left via 215° course to intercept TCM R-267 and hold, continue climb in hold to 4000. Cross OYABO at or above 3000.

ATIS <b>135.825 270.1</b>	SEATTLE APP CON <b>126.5 377.15</b>	TOWER <b>124.8 259.3</b>	GND CON <b>118.175 279.65</b>
------------------------------	--	-----------------------------	----------------------------------



CATEGORY	A	B	C	D	E
S-ILS 34	RA 139/12		100	DA 422	

TACOMA, WASHINGTON 47°08'N-122°29'W MCCHORD FLD (JOINT BASE LEWIS MCCHORD) (KTCM)

Amdt 4 10SEP20

# ILS RWY 34 (CAT II)

NW-1, 16 APR 2026 to 14 MAY 2026

NW-1, 16 APR 2026 to 14 MAY 2026