

ILS or LOC RWY 16

LOC I-MAR 109.9	APCH CRS 165°	Rwy Idg 10,108 TDZE 286 Arprt Elev 322
---------------------------	-------------------------	---

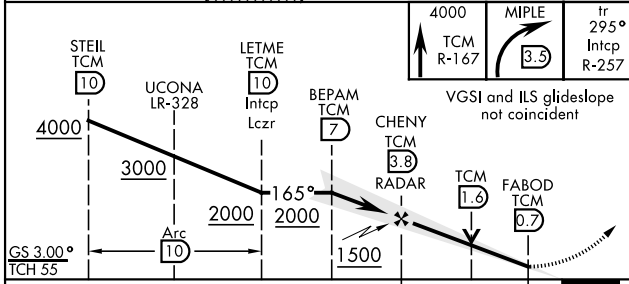
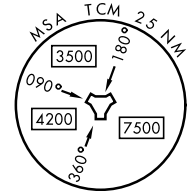
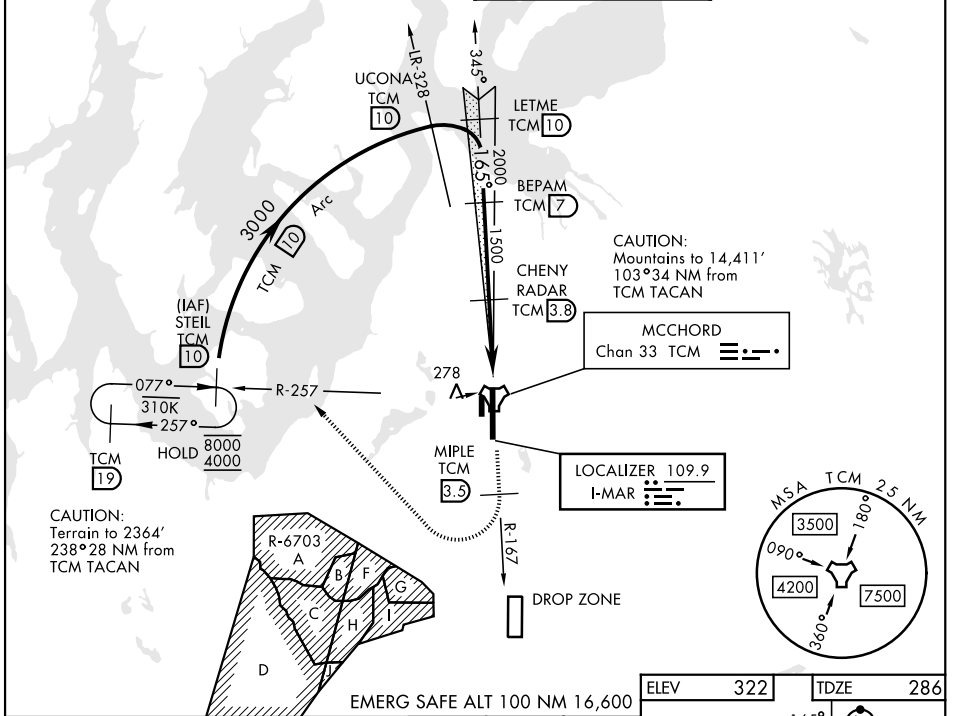
[USAF] MCCHORD FLD (JOINT BASE LEWIS MCCHORD) (KTCM)

RADAR or DME required.

A1 ALSF-1

MISSED APPROACH: Climb to 4000 on TCM TACAN R-167. At 3.5 DME turn right via 295° course to intercept TCM R-257 to STEL and hold. Continue climb in hold to 4000.

ATIS 135.825 270.1	SEATTLE APP CON 126.5 377.15	TOWER 124.8 259.3	GND CON 118.175 279.65
------------------------------	--	-----------------------------	----------------------------------



ELEV 322	TDZE 286
TDZL/RCLS Rwy 34 HIRL Rwy 16-34 FAF to MAP 3.1 NM	
Knots	60 90 120 150 180
Min:Sec	3:06 2:04 1:33 1:14 1:02

CATEGORY	A	B	C	D	E
S-ILS 16*	613/40		327	(300-¾)	
S-LOC 16**	860/40	574 (600-¾)	860-1¼	574	(600-1¼)
CIRCLING ***	940-1	618 (700-1)	940-1¾ 618 (700-1¾)	940-2 618 (700-2)	1020-2½ 698 (700-2½)

TACOMA, WASHINGTON 47°08'N-122°29'W MCCHORD FLD (JOINT BASE LEWIS MCCHORD) (KTCM)

Amtd 6 27NOV25

ILS or LOC RWY 16

NW-1, 16 APR 2026 to 14 MAY 2026

NW-1, 16 APR 2026 to 14 MAY 2026