


# PUGET-SIX DEPARTURE

RADAR required

ATIS  
135.825 270.1  
GND CON  
118.175 279.65  
TOWER  
124.8 259.3  
SEATTLE DEP CON  
126.5 377.15

If unable to make ATC charted crossing  
restriction advise ATC prior to departure.

Maximum 250 KIAS  
Radar vectors required within 10 NM after departure.




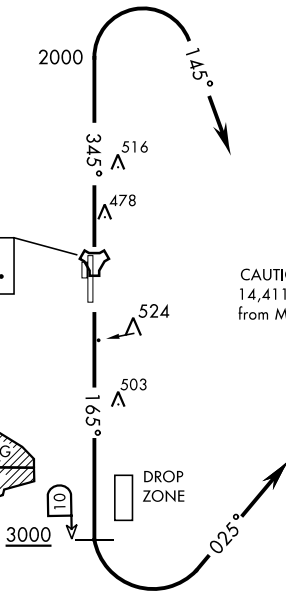
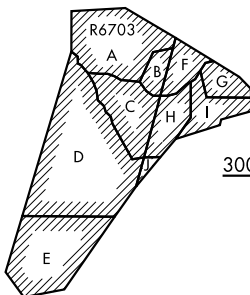
SEATTLE  
116.8 SEA  
Chan 115

MCCHORD  
Chan 33 TCM



CAUTION: Mountains to  
14,411' 103° 34 NM  
from McChord.

OLYMPIA  
113.4 OLM  
Chan 81

## DEPARTURE ROUTE DESCRIPTION

TAKEOFF RWY 16: Climb on track 165° to cross TCM TACAN 10 DME at or above 3000. Then turn left tracking 025° to expect radar vectors. Maintain ATC assigned altitude.

TAKEOFF RWY 34: Climb on track 345° to 2000, then turn right tracking 145° to expect radar vectors. Maintain ATC assigned altitude.