

TACAN RWY 16

TACAN TCM Chan 33	APCH CRS 160°	Rwy Idg 10,108 TDZE 286 Arpt Elev 322
-----------------------------	-------------------------	--

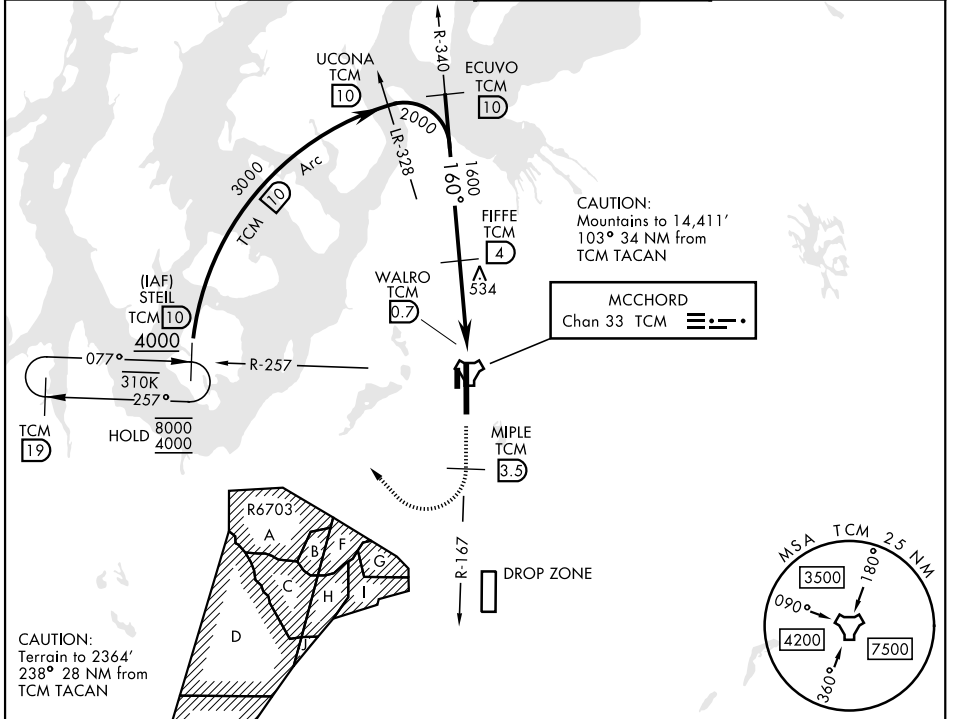
[USAF] MCCHORD FLD (JOINT BASE LEWIS MCCHORD) (KTCM)

▼ * When ALS inop, increase CAT AB RVR to 55, vis to 1 mile, CAT CDE vis to 1 1/2 miles.
 ** Circling not authorized E of Rwy 16-34.

 ALSF-1

 MISSED APPROACH: Climb to 4000 on TCM TACAN R-167.
 At TCM 3.5 DME turn right via 295° course to intercept TCM R-257 to STEIL and hold, continue climb-in-hold to 4000.

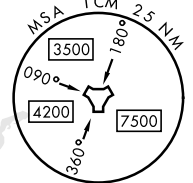
ATIS 135.825 270.1	SEATTLE APP CON 126.5 377.15	TOWER 124.8 259.3	GND CON 118.175 279.65
------------------------------	--	-----------------------------	----------------------------------



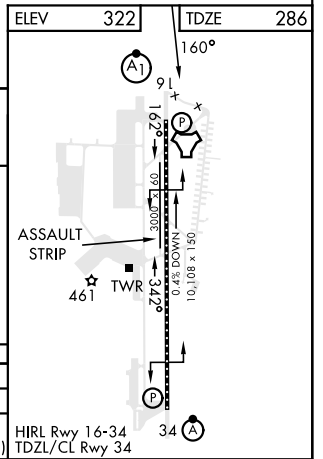
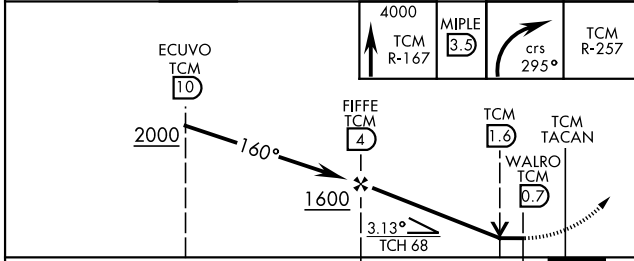
CAUTION:
 Terrain to 2364'
 238° 28 NM from
 TCM TACAN

CAUTION:
 Mountains to 14,411'
 103° 34 NM from
 TCM TACAN

MCCHORD
 Chan 33 TCM



EMERG SAFE ALT 100 NM 16,600



CATEGORY	A	B	C	D	E
S-16 *	800/24	514 (500-1/2)	800/55	514	(500-1)
CIRCLING **	940-1 618 (700-1)	940-1 3/4 618 (700-1 3/4)	940-2 618 (700-2)	1020-2 1/2 698 (700-2 1/2)	

TACAN RWY 16

NW-1, 16 APR 2026 to 14 MAY 2026

NW-1, 16 APR 2026 to 14 MAY 2026