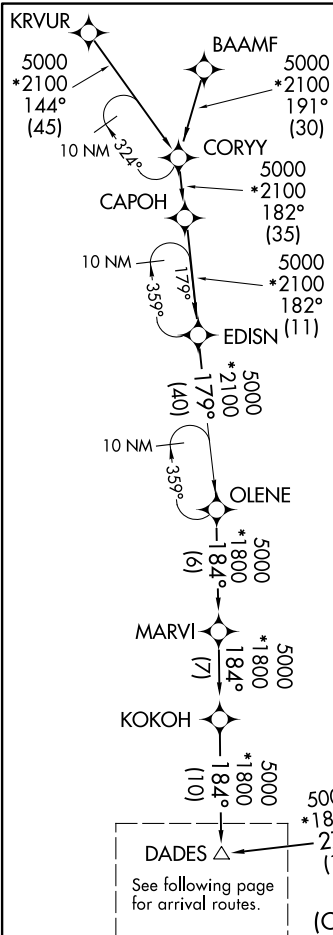


DADES TWO ARRIVAL (RNAV)
(DADES, DADES2) 17 APR 25

Transition Routes

TAMPA, FLORIDA



RNAV 1 - DME/DME/IRU or GPS.

RADAR required.

NOTE: Jet and turboprop aircraft only.
NOTE: KRVUR Transition, EDISN Transition, BEAUX Transition, NICCK Transition, ATC assigned only.



TAMPA APP CON
135.5 279.6
KMCF ATIS
133.825 270.1
PIE ATIS
134.5
TPA D-ATIS
126.45

(DADES, DADES2) 25107
DADES TWO ARRIVAL (RNAV)

Transition Routes

TAMPA, FLORIDA

AL-416 (FAA)

(CONTINUED ON FOLLOWING PAGE)

NOTE: Chart not to scale.

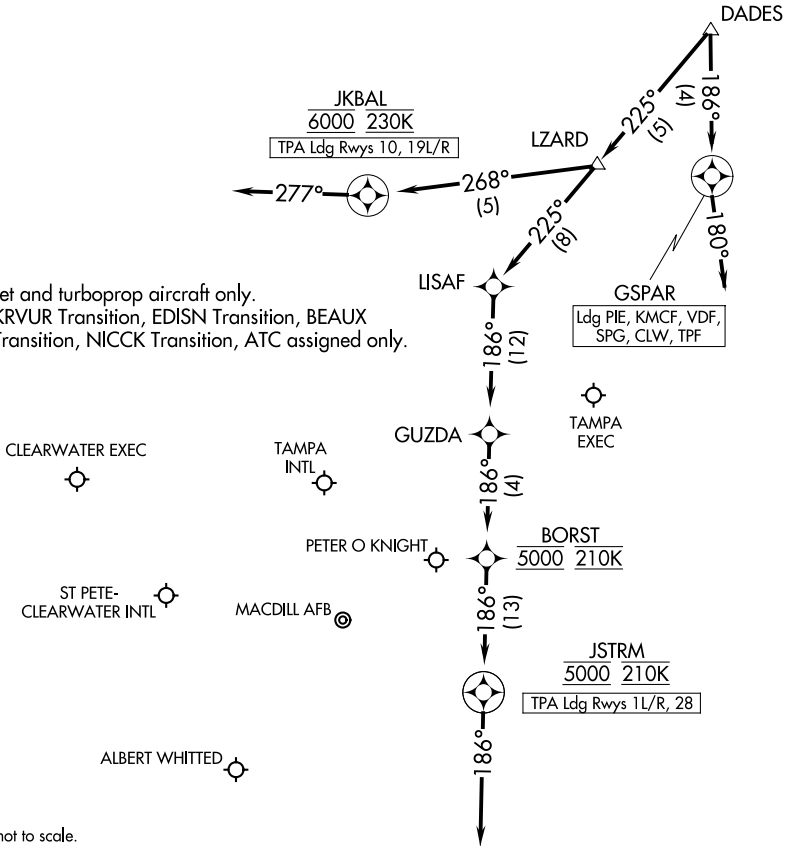
- BAAMF TRANSITION (BAAMF.DADES2)
- BEAUX TRANSITION (BEAUX.DADES2)
- EDISN TRANSITION (EDISN.DADES2)
- HIBAC TRANSITION (HIBAC.DADES2)
- KRVUR TRANSITION (KRVUR.DADES2)
- NICCK TRANSITION (NICCK.DADES2)

TAMPA APP CON
135.5 279.6
KMCF ATIS
133.825 270.1
PIE ATIS
134.5
TPA D-ATIS
126.45

RNAV 1- DME/DME/IRU or GPS.

RADAR required.

NOTE: Jet and turboprop aircraft only.
NOTE: KRVUR Transition, EDISN Transition, BEAUX Transition, NICCK Transition, ATC assigned only.



NOTE: Chart not to scale.

ARRIVAL ROUTE DESCRIPTION

LANDING TPA RUNWAYS 1L/R, 28: From DADES on track 225° to LZARD, then on track 225° to LISAF, then on track 186° to GUZDA, then on track 186° to cross BORST at 5000 and at 210K, then on track 186° to cross JSTRM at 5000 and at 210K, then on track 186°.
Expect RADAR vectors to final approach course.

LANDING TPA RUNWAYS 10, 19L/R: From DADES on track 225° to LZARD, then on track 268° to cross JKBAL at 6000 and at 230K, then on track 277°.
Expect RADAR vectors to final approach course.

LANDING PIE/CLW/KMCF/SPG/TPF/VDF: From DADES on track 186° to GSPAR, then on track 180°.
Expect RADAR vectors to final approach course.