

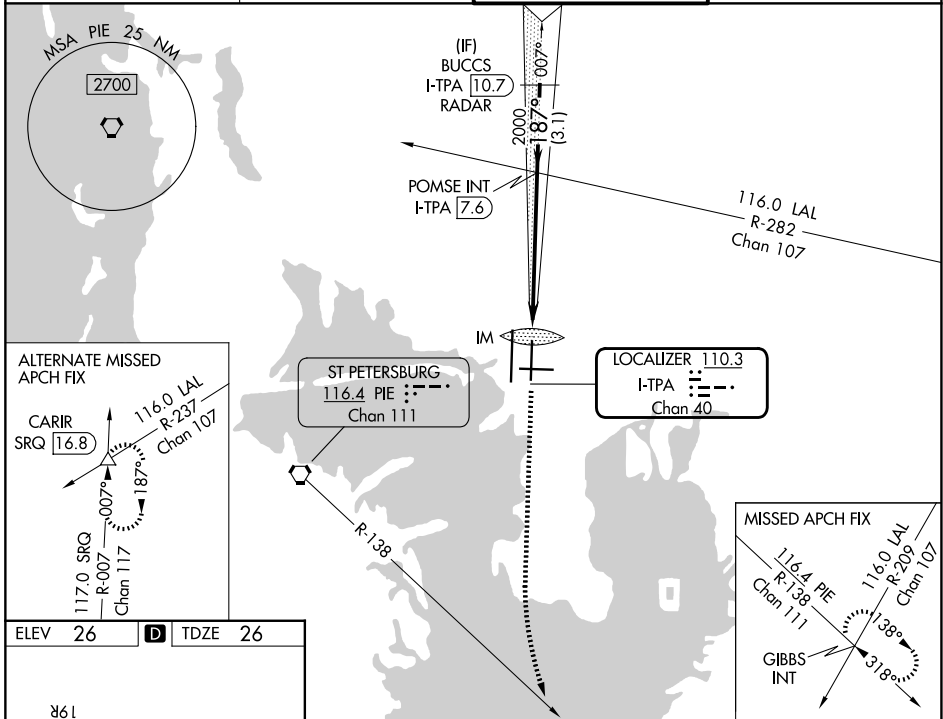
LOC/DME I-TPA 110.3 Chan 40	APP CRS 187°	Rwy Ldg 8300 TDZE 26 Apt Elev 26
---	------------------------	---

ILS RWY 19L (SA CAT I)

TAMPA INTL (TPA)

RADAR required for procedure entry.		ALSF-2 	MISSED APPROACH: Climb to 600 then climbing left turn to 4000 on heading 160° and on PIE VORTAC R-138 to GIBBS INT and hold.
	Simultaneous approach authorized. Requires specific OPSPEC, MSPEC, or LOA approval.		

D-ATIS 126.45	TAMPA APP CON 118.5 307.175	TAMPA TOWER 119.5 269.4	GND CON 121.7 269.4
-------------------------	---------------------------------------	-----------------------------------	-------------------------------



ELEV 26	D	TDZE 26
---------	----------	---------

Profile view: 600, 4000, 2000, 3000. Distances: 1048', 6 NM, 3.1 NM. GS 3.00° TCH 51.

600	4000	PIE R-138	GIBBS INT	VGSI and ILS glidepath not coincident (VGSI Angle 3.00/TCH 74).
hdg 160°				
IM		POMSE INT I-TPA 7.6	BUCCS I-TPA 10.7 RADAR	
1048'		6 NM	3.1 NM	
CATEGORY	A	B	C	D
S-ILS 19L	RA 150/14		150	DA 176

SA CATEGORY I ILS- SPECIAL AIRCREW & AIRCRAFT CERTIFICATION REQUIRED

SE-3, 16 APR 2026 to 14 MAY 2026

SE-3, 16 APR 2026 to 14 MAY 2026