

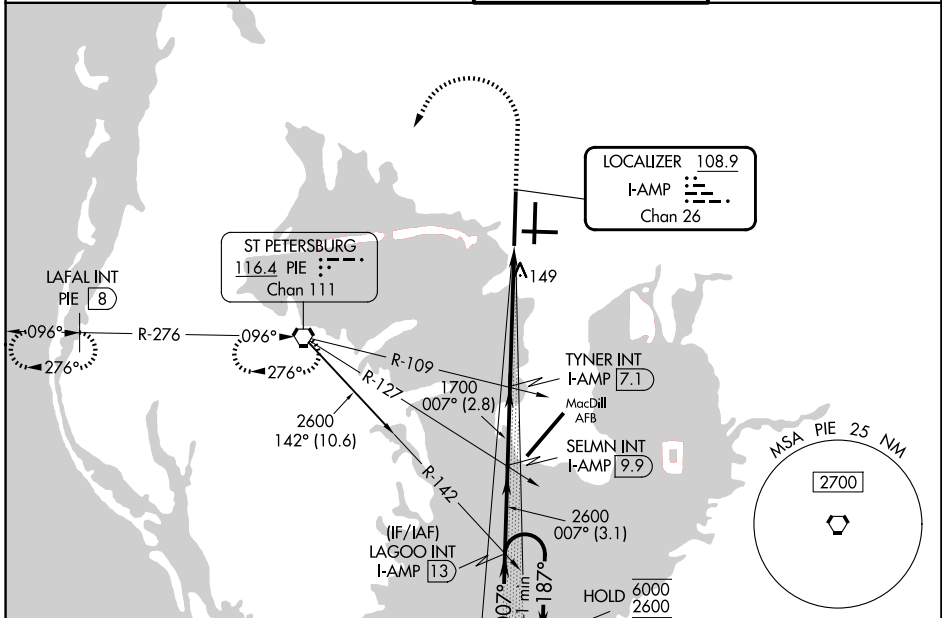
LOC/DME I-AMP 108.9 Chan 26	APP CRS 007°	Rwy Ldg 10800 TDZE 11 Apt Elev 26
---	------------------------	--

ILS RWY 1L (CAT II & III)

TAMPA INTL (TPA)

DME and RADAR required.	ALSF-2 	MISSED APPROACH: Climb to 500 then climbing left turn to 2000 direct PIE VORTAC and hold, continue climb-in-hold to 2000. (TACAN aircraft climb to 500 then climbing left turn to 2000 direct PIE VORTAC then on PIE VORTAC R-276 to LAFAL INT/PIE 8 DME and hold W, RT, 096° inbound)
Simultaneous approach authorized. CAT II: RVR 1000 authorized with specific OPSPEC, MSPEC, or LOA approval and use of autoland or HUD to touchdown.		

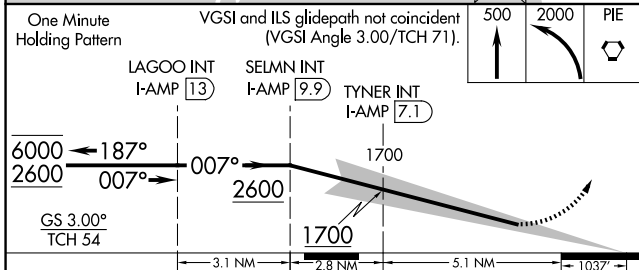
D-ATIS 126.45	TAMPA APP CON 118.5 307.175	TAMPA TOWER 119.5 269.4	GND CON 121.7 269.4
-------------------------	---------------------------------------	-----------------------------------	-------------------------------



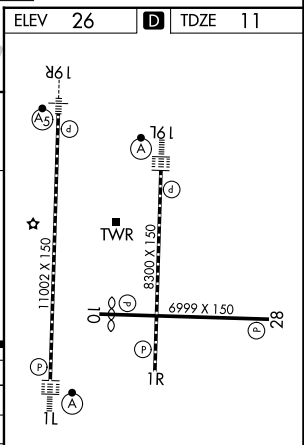
SE-3, 16 APR 2026 to 14 MAY 2026

SE-3, 16 APR 2026 to 14 MAY 2026

ELEV 26	TDZE 11
---------	---------



CATEGORY	A	B	C	D
S-ILS 1L	CAT II RA 105/12 100 DA 111			
S-ILS 1L	CAT III RVR 06			



CATEGORY II & III ILS - SPECIAL AIRCREW & AIRCRAFT CERTIFICATION REQUIRED

REIL Rwy 1R
HIRL Rwys 1L-19R, 1R-19L, and 10-28
TDZL/RCLS Rwys 1L and 19L