

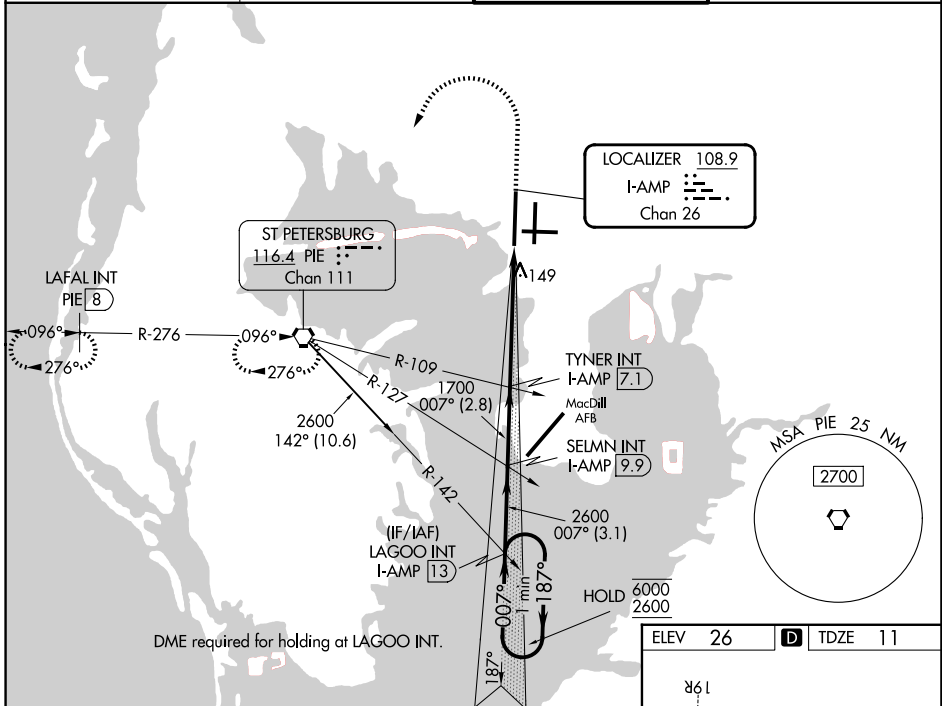
LOC/DME I-AMP 108.9 Chan 26	APP CRS 007°	Rwy Ldg 10800 TDZE 11 Apt Elev 26
---	------------------------	--

ILS RWY 1L (SA CAT I)

TAMPA INTL (TPA)

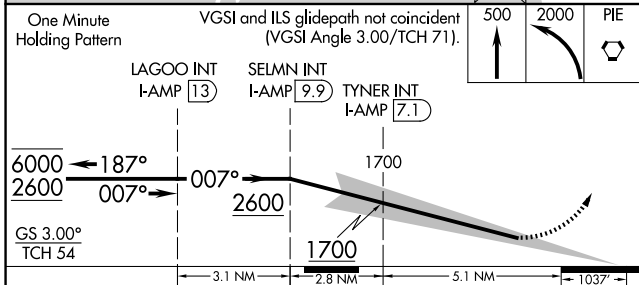
DME and RADAR required.	ALSF-2 	MISSED APPROACH: Climb to 500 then climbing left turn to 2000 direct PIE VORTAC and hold, continue climb-in-hold to 2000. (TACAN aircraft climb to 500 then climbing left turn to 2000 direct PIE VORTAC then on PIE VORTAC R-276 to LAFAL INT/PIE 8 DME and hold W, RT, 096° inbound).
-------------------------	------------	---

D-ATIS 126.45	TAMPA APP CON 118.5 307.175	TAMPA TOWER 119.5 269.4	GND CON 121.7 269.4
-------------------------	---------------------------------------	-----------------------------------	-------------------------------



SE-3, 16 APR 2026 to 14 MAY 2026

SE-3, 16 APR 2026 to 14 MAY 2026



ELEV 26	D TDZE 11
---------	------------------

TOWER AND NAVIGATION

CATEGORY	A	B	C	D
S-ILS 1L	RA 155/14 150 DA 161			

SA CATEGORY I ILS - SPECIAL AIRCREW & AIRCRAFT CERTIFICATION REQUIRED

REIL Rwy 1R
HIRL Rwys 1L-19R, 1R-19L, and 10-28
TDZL/RCLS Rwys 1L and 19L