

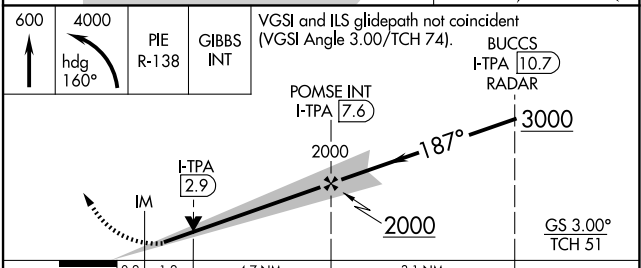
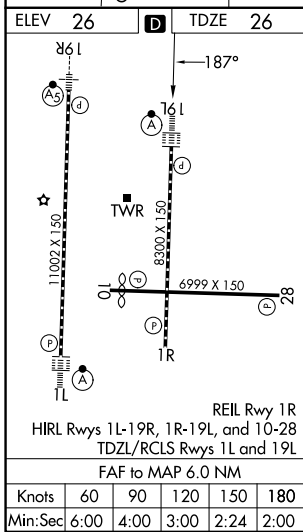
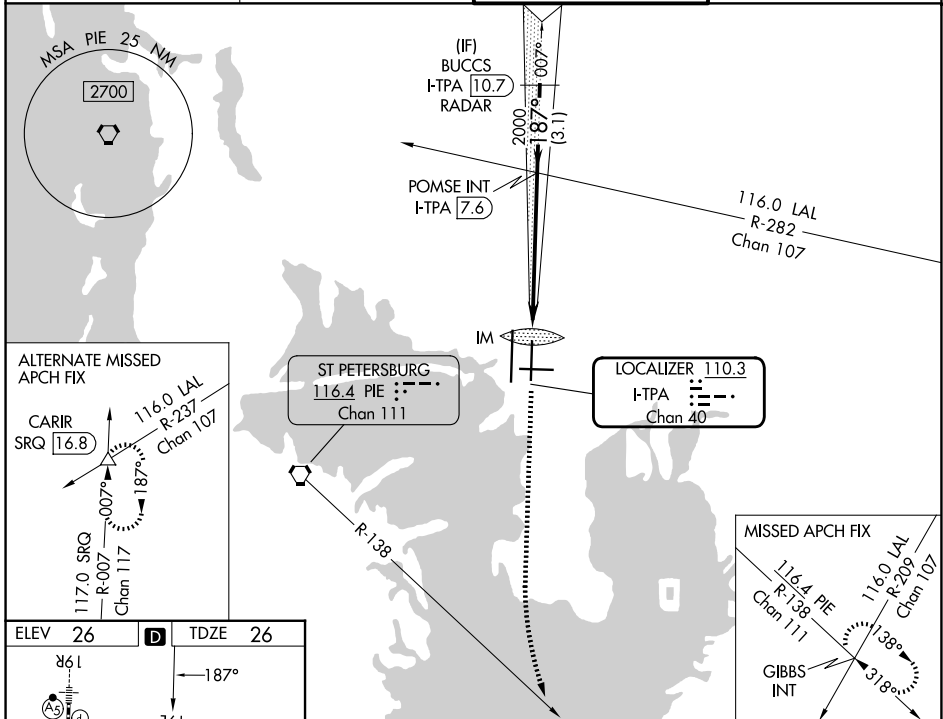
LOC/DME I-TPA <b>110.3</b> Chan 40	APP CRS <b>187°</b>	Rwy Ldg TDZE Apt Elev	<b>8300</b> <b>26</b> <b>26</b>
--	------------------------	-----------------------------	---------------------------------------

# ILS or LOC RWY 19L

TAMPA INTL (TPA)

RADAR required for procedure entry.		ALSF-2 	MISSED APPROACH: Climb to 600 then climbing left turn to 4000 on heading 160° and on PIE VORTAC R-138 to GIBBS INT and hold.
	Simultaneous approach authorized. For inop ALS, increase S-ILS 19L Cat E visibility to RVR 4000 and S-LOC 19L Cat C, D, and E visibility to 1 3/8 SM.		

D-ATIS <b>126.45</b>	TAMPA APP CON <b>118.5 307.175</b>	TAMPA TOWER <b>119.5 269.4</b>	GND CON <b>121.7 269.4</b>
-------------------------	---------------------------------------	-----------------------------------	-------------------------------



CATEGORY	A	B	C	D	E
S-ILS 19L	226/18 200 (200-1/2)				
S-LOC 19L	520/24	494 (500-1/2)	520/50		494 (500-1)
CIRCLING	600-1	574 (600-1)	680-1 3/4 654 (700-1 3/4)	980-3 954 (1000-3)	NA

SE-3, 16 APR 2026 to 14 MAY 2026

SE-3, 16 APR 2026 to 14 MAY 2026