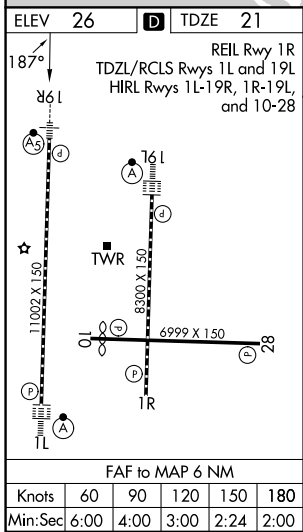
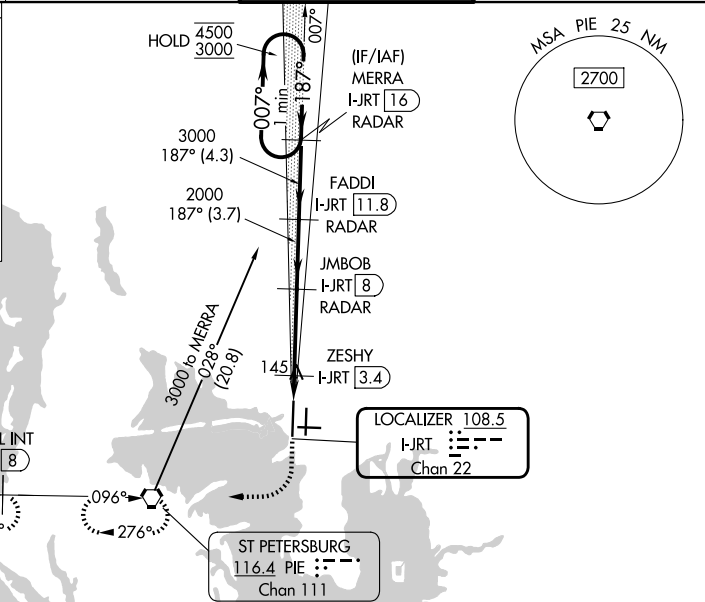
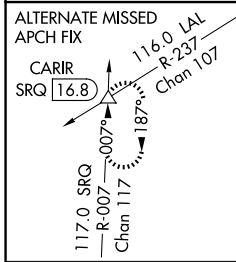


LOC/DME I-JRT 108.5 Chan 22	APP CRS 187°	Rwy Ldg 11002 TDZE 21 Apt Elev 26
---	------------------------	--

ILS or LOC RWY 19R

TAMPA INTL (TPA)

DME or RADAR required.		MALS R 	MISSED APPROACH: Climb to 500 then climbing right turn to 2000 direct PIE VORTAC and hold, continue climb-in-hold 2000. (TACAN aircraft climb to 500 then climbing right turn to 2000 direct PIE VORTAC then on PIE VORTAC R-276 to LAFAL INT/PIE 8 DME and hold W, RT, 096° inbound.)	
<p>Simultaneous approach authorized. For inop ALS, increase S-ILS 19R Cat E visibility to RVR 4000 and S-LOC 19R Cats C/D/E visibility to RVR 5500. *RVR 1800 authorized with use of FD or AP or HUD to DA.</p>				
D-ATIS 126.45	TAMPA APP CON 118.5 307.175	TAMPA TOWER 119.5 269.4	GND CON 121.7 269.4	



ELEV 26	TDZE 21	<p>REIL Rwy 1R TDZL/RCLS Rwy 1L and 19L HIRL Rwy 1L-19R, 1R-19L, and 10-28</p>			
500	2000	PIE	<p>VGSI and ILS glidepath not coincident (VGSI Angle 3.00/TCH 71).</p> <p>One Minute Holding Pattern</p>		
<p>FADDI I-JRT 11.8 JMBOB I-JRT 8 ZESHY I-JRT 3.4 MERRA I-JRT 16</p>		<p>RADAR RADAR RADAR</p>			
<p>1.4 NM</p>		<p>4.6 NM</p>			
<p>3.7 NM</p>		<p>4.3 NM</p>			
CATEGORY	A	B	C	D	E
S-ILS 19R*	221/24 200 (200-½)				
S-LOC 19R	400/24 379 (400-½)		400/35 379 (400-⅝)		
CIRCLING	600-1 574 (600-1)		680-1¼ 654 (700-1¼)		980-3 954 (1000-3)

SE-3, 16 APR 2026 to 14 MAY 2026

SE-3, 16 APR 2026 to 14 MAY 2026