

MAATY FIVE ARRIVAL (RNAV) Transition Routes

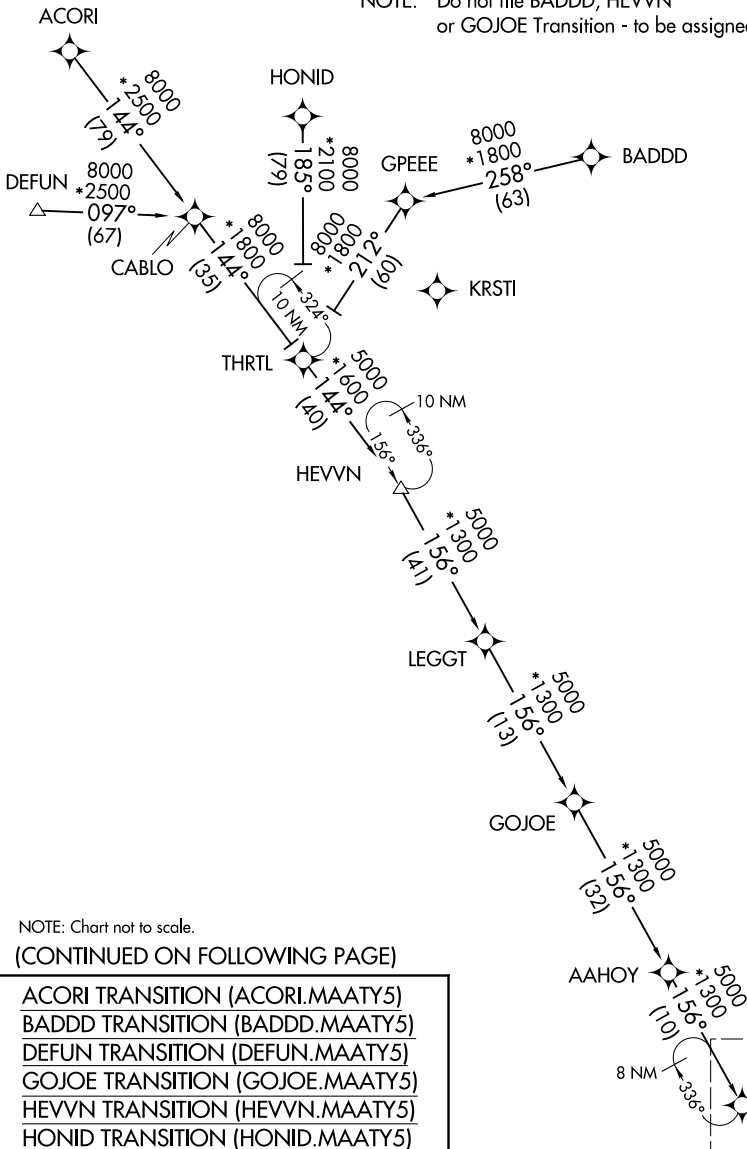
TAMPA, FLORIDA

TAMPA APP CON  
118.8 239.3  
KMCF ATIS  
133.825 270.1  
LAL ATIS  
118.025  
TPA D-ATIS  
126.45

RNAV 1 - DME/DME/IRU or GPS.

RADAR required.

NOTE: Jet and turboprop aircraft only.  
NOTE: Do not file BADDD, HEVVN  
or GOJOE Transition - to be assigned by ATC.



NOTE: Chart not to scale.

(CONTINUED ON FOLLOWING PAGE)

- ACORI TRANSITION (ACORI.MAATY5)
- BADDD TRANSITION (BADDD.MAATY5)
- DEFUN TRANSITION (DEFUN.MAATY5)
- GOJOE TRANSITION (GOJOE.MAATY5)
- HEVVN TRANSITION (HEVVN.MAATY5)
- HONID TRANSITION (HONID.MAATY5)

See following page for arrival routes.

SE-3, 16 APR 2026 to 14 MAY 2026

SE-3, 16 APR 2026 to 14 MAY 2026

MAATY FIVE ARRIVAL (RNAV) Arrival Routes

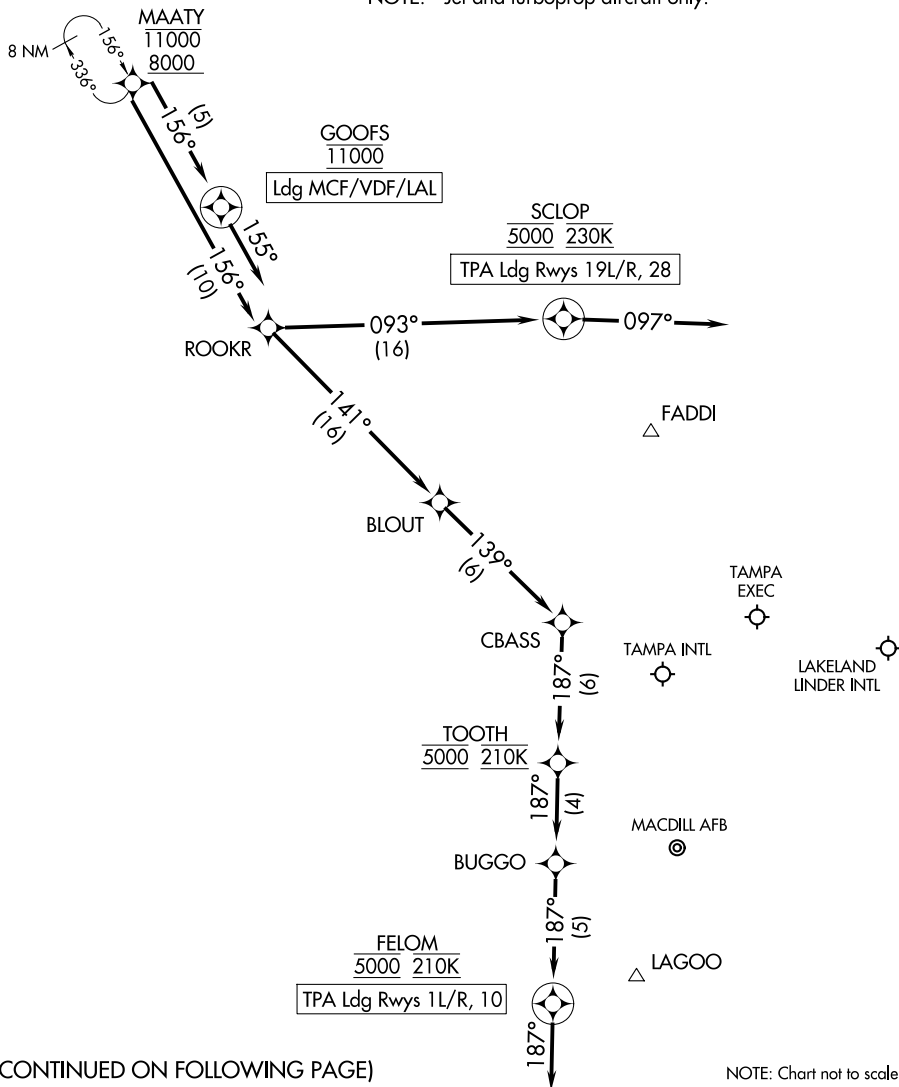
TAMPA, FLORIDA

TAMPA APP CON  
118.8 239.3  
KMCF ATIS  
133.825 270.1  
LAL ATIS  
118.025  
TPA D-ATIS  
126.45

RNAV 1 - DME/DME/IRU or GPS.

RADAR required.

NOTE: Jet and turboprop aircraft only.



(CONTINUED ON FOLLOWING PAGE)

NOTE: Chart not to scale.

SE-3, 16 APR 2026 to 14 MAY 2026

SE-3, 16 APR 2026 to 14 MAY 2026

ARRIVAL ROUTE DESCRIPTION

TPA: From MAATY on track 156° to ROOKR.

LANDING TPA RUNWAYS 1L/R, 10: From ROOKR on track 141° to BLOUT, then on track 139° to CBASS, then on track 187° to cross TOOTH at 5000 and at 210K, then on track 187° to BUGGO, then on track 187° to cross FELOM at 5000 and at 210K, then on track 187°. Expect RADAR vectors to final approach course.

LANDING TPA RUNWAYS 19L/R, 28: From ROOKR on track 093° to cross SCLOP at 5000 and at 230K, then on track 097°. Expect RADAR vectors to final approach course.

LANDING MCF/VDF/LAL: From MAATY on track 156° to cross GOOFS at 11000, then on heading 155°. Expect RADAR vectors to final approach course.

SE-3, 16 APR 2026 to 14 MAY 2026

SE-3, 16 APR 2026 to 14 MAY 2026