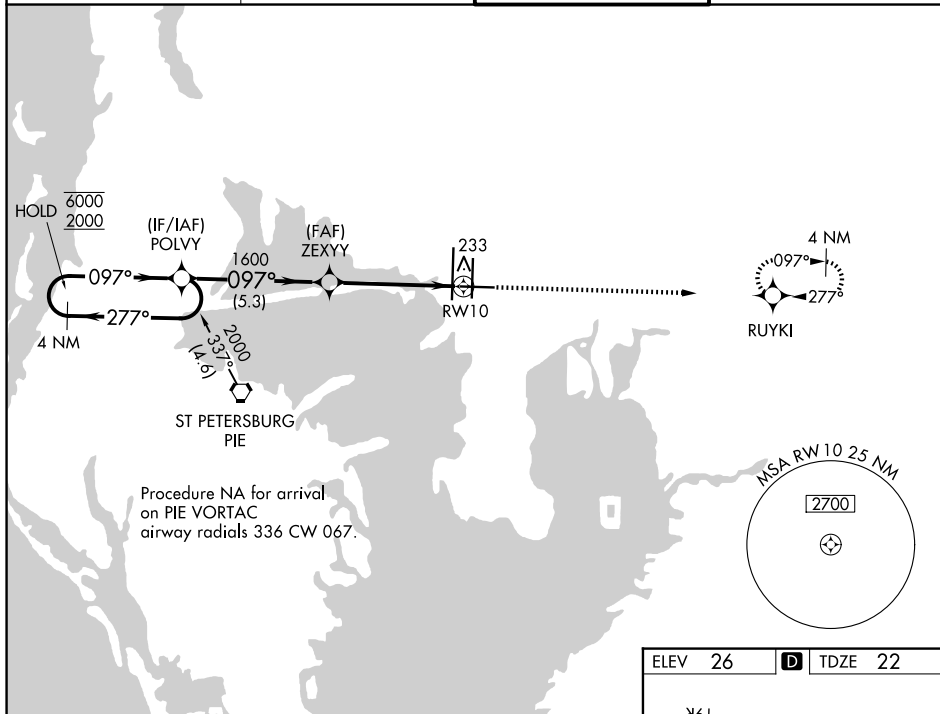


WAAS CH 77720 W10A	APP CRS 097°	Rwy Ldg TDZE 22 Apt Elev 26	6501
--	------------------------	---	-------------

RNAV (GPS) RWY 10

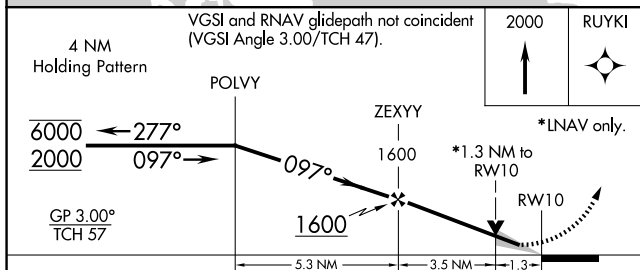
TAMPA INTL (TPA)

RNP APCH.		MISSED APPROACH: Climb to 2000 direct RUYKI and hold.	
<p>▼ For uncompensated Baro-VNAV systems, LNAV/VNAV NA below 2°C or above 54°C.</p> <p>▲</p>			
D-ATIS 126.45	TAMPA APP CON 118.5 307.175	TAMPA TOWER 119.5 269.4	GND CON 121.7 269.4



SE-3, 16 APR 2026 to 14 MAY 2026

SE-3, 16 APR 2026 to 14 MAY 2026



4 NM Holding Pattern		VGSI and RNAV glidepath not coincident (VGSI Angle 3.00/TCH 47).		2000	RUYKI
GP 3.00° TCH 57		*LNAV only.			
CATEGORY	A	B	C	D	
LPV DA	272-1		250 (300-1)		
LNAV/VNAV DA	436-1 3/8		414 (500-1 3/8)		
LNAV MDA	480-1 458 (500-1)		480-1 3/8 458 (500-1 3/8)		
CIRCLING	600-1 574 (600-1)		680-1 3/4 980-3 654 (700-1 3/4) 954 (1000-3)		

