

WAAS CH <b>50406</b> W01A	APP CRS <b>007°</b>	Rwy Ldg <b>10800</b> TDZE <b>11</b> Apt Elev <b>26</b>
---------------------------------	------------------------	--

# RNAV (GPS) Y RWY 1L

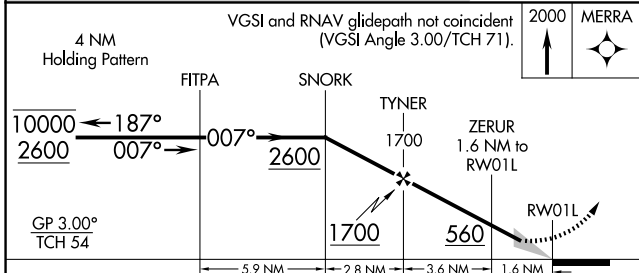
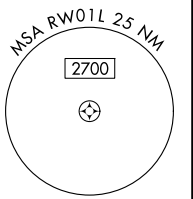
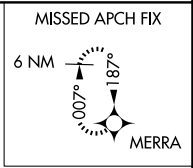
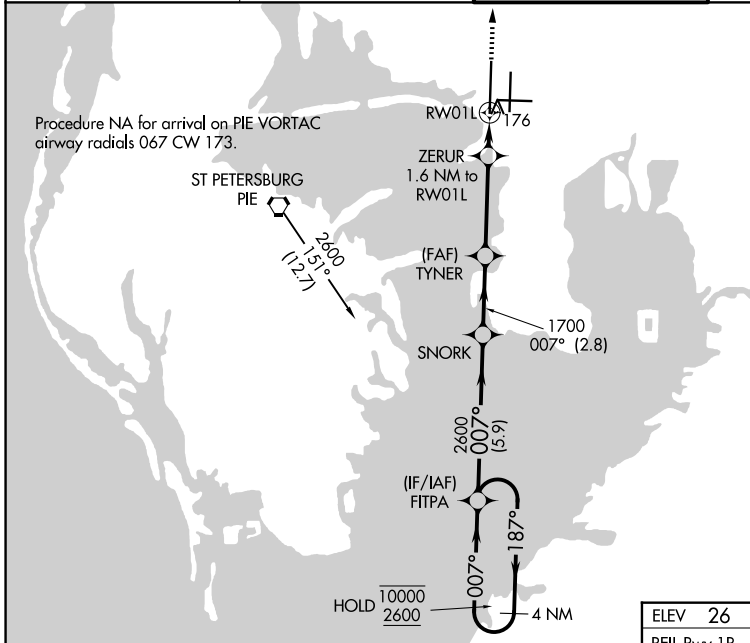
TAMPA INTL (TPA)

RNP APCH - GPS.

For uncompensated Baro-VNAV systems, LNAV/VNAV NA below 4°C or above 54°C. For inop ALSF, increase LPV Cat E visibility to RVR 4000, LNAV/VNAV all Cats visibility to RVR 6000, and LNAV Cat E visibility to 1 1/4 SM. Simultaneous approach authorized with Rwy 1R. LNAV procedure NA during simultaneous operations. Use of FD or AP required during simultaneous operations.

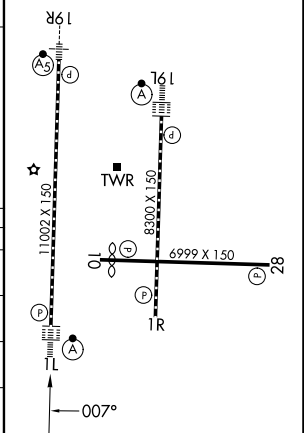
ALSF-2 MISSED APPROACH: Climb to 2000 direct MERRA and hold.

D-ATIS <b>126.45</b>	TAMPA APP CON <b>118.5 307.175</b>	TAMPA TOWER <b>119.5 269.4</b>	GND CON <b>121.7 269.4</b>
-------------------------	---------------------------------------	-----------------------------------	-------------------------------



ELEV <b>26</b>	TDZE <b>11</b>
----------------	----------------

REIL Rwy 1R  
HIRL Rwsy 1L-19R, 1R-19L, and 10-28  
TDZL/RCLS Rwsy 1L and 19L



CATEGORY	A	B	C	D	E
LPV DA	211/18		200 (200-1/2)		
LNAV/VNAV DA	431/40		420 (500-3/4)		
LNAV MDA	440/24	429 (500-1/2)	440/40	429 (500-3/4)	
CIRCLING	600-1	574 (600-1)	680-1 3/4 654 (700-1 3/4)	980-3	954 (1000-3)

SE-3, 16 APR 2026 to 14 MAY 2026

SE-3, 16 APR 2026 to 14 MAY 2026