

WAAS Ch 87099 W13A	APP CRS 130°	Rwy Ldg 4559 TDZE 388 Apt Elev 390
--	------------------------	---

RNAV (GPS) RWY 13

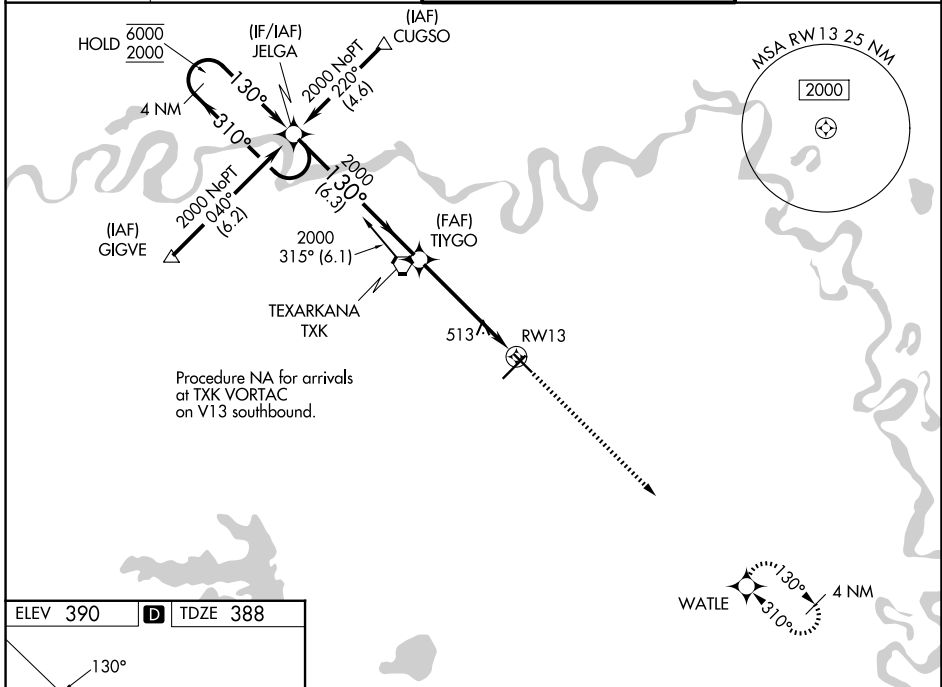
TEXARKANA RGNL-WEBB FLD (TXK)

RNP APCH - GPS.

⚠ Baro-VNAV and VDP NA when using De Queen altimeter setting. Rwy 13 helicopter visibility reduction below $\frac{3}{4}$ SM NA. For uncompensated Baro-VNAV systems, LNAV/VNAV NA below -15°C or above 54°C. When local altimeter setting not received, use De Queen altimeter setting and increase LPV DA to 748 feet and all Cats visibility $\frac{1}{4}$ SM, LNAV/VNAV DA to 868 feet all Cats visibility $\frac{3}{8}$ SM, and all MDAs 100 feet and LNAV and Circling Cats C/D visibility $\frac{1}{4}$ SM.

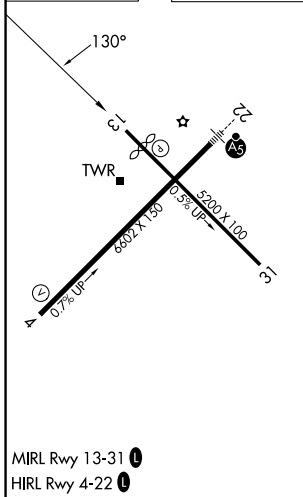
MISSED APPROACH:
Climb to 2000 direct WATLE and hold.

ATIS 120.2	FORT WORTH CENTER 123.925 269.475	TEXARKANA TOWER* 123.875 (CTAF) 235.625	GND CON 119.225
----------------------	---	--	---------------------------



Procedure NA for arrivals at TXK VORTAC on V13 southbound.

ELEV 390	D	TDZE 388
----------	----------	----------



4 NM Holding Pattern		VGSI and RNAV glidepath not coincident (VGSI Angle 3.00/TCH 48).		2000	WATLE
6000	← 310°	130° →	2000	↑	⬠
2000	← 130°	→	2000		
GP 3.00° TCH 54		6.3 NM		3.8 NM	
				1.2 NM to RWY 13	
CATEGORY	A	B	C	D	
LPV DA		648- $\frac{3}{4}$	260 (300- $\frac{3}{4}$)		
LNAV/VNAV DA		768-1	380 (400-1)		
LNAV MDA	780-1	392 (400-1)	780- $\frac{1}{8}$	392 (400- $\frac{1}{8}$)	
CIRCLING	820-1 430 (500-1)	900-1 510 (600-1)	1000- $\frac{1}{4}$ 610 (700- $\frac{1}{4}$)	1080- $\frac{1}{4}$ 690 (700- $\frac{1}{4}$)	

TEXARKANA, ARKANSAS
Orig-D 10AUG23

33°27'N-93°59'W

TEXARKANA RGNL-WEBB FLD (TXK) RNAV (GPS) RWY 13

SC-1, 16 APR 2026 to 14 MAY 2026

SC-1, 16 APR 2026 to 14 MAY 2026