

WAAS Ch <b>53699</b> <b>W22A</b>	APP CRS <b>220°</b>	Rwy Ldg <b>6602</b> TDZE <b>384</b> Apt Elev <b>390</b>
--	------------------------	---

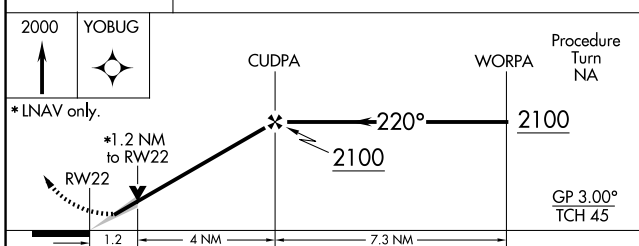
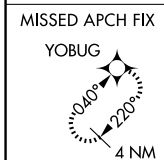
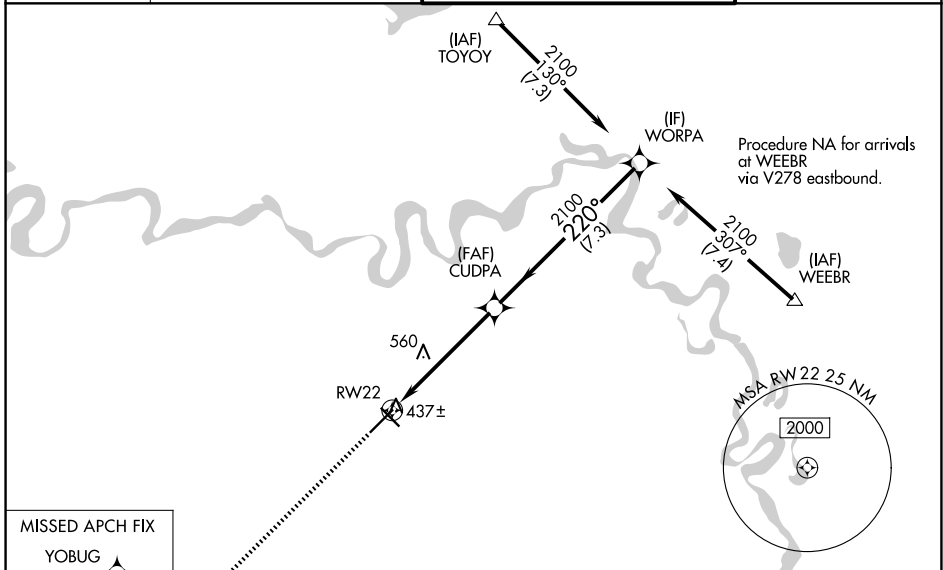
# RNAV (GPS) RWY 22

TEXARKANA RGNL-WEBB FLD (TXK)

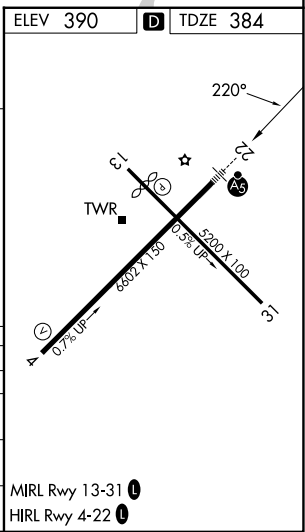
**⚠** DME/DME RNP-0.3 NA. For uncompensated Baro-VNAV systems, LNAV/VNAV NA below -1.5°C (5°F) or above 48°C (118°F). When local altimeter setting not received, use J Lynn Helms Sevier County altimeter setting and increase all DA/MDA 100 feet, increase LPV all Cats visibility ¼ mile, LNAV/VNAV all Cats visibility ½ mile, LNAV and circling Cat C and D visibility ¼ mile. Baro-VNAV and VDP NA when using J Lynn Helms Sevier County altimeter setting. For inoperative MALSR when using J Lynn Helms Sevier County altimeter setting increase LPV all Cats visibility to 1¼.

**MALSR**  
**MISSED APPROACH:**  
Climb to 2000 direct YOBUG and hold.

ATIS <b>120.2</b>	FORT WORTH CENTER <b>123.925 269.475</b>	TEXARKANA TOWER ★ <b>123.875 (CTAF) 0 235.625</b>	GND CON <b>119.225</b>
----------------------	---	--	---------------------------



CATEGORY	A	B	C	D
LPV DA	634-1/2		250 (300-1/2)	
LNAV/VNAV DA	687-1/2	303 (300-1/2)		687-3/4 303 (300-3/4)
LNAV MDA	820-1/2 436 (500-1/2)	820-3/4 436 (500-3/4)	820-1 436 (500-1)	
CIRCLING	820-1 430 (500-1)	900-1 510 (600-1)	1000-1 3/4 610 (700-1 3/4)	1080-2 1/4 690 (700-2 1/4)



SC-1, 16 APR 2026 to 14 MAY 2026

SC-1, 16 APR 2026 to 14 MAY 2026