

WAAS Ch 49199	APP CRS 310°	Rwy Ldg 4559
W31A		TDZE 390
		Apt Elev 390

RNAV (GPS) RWY 31

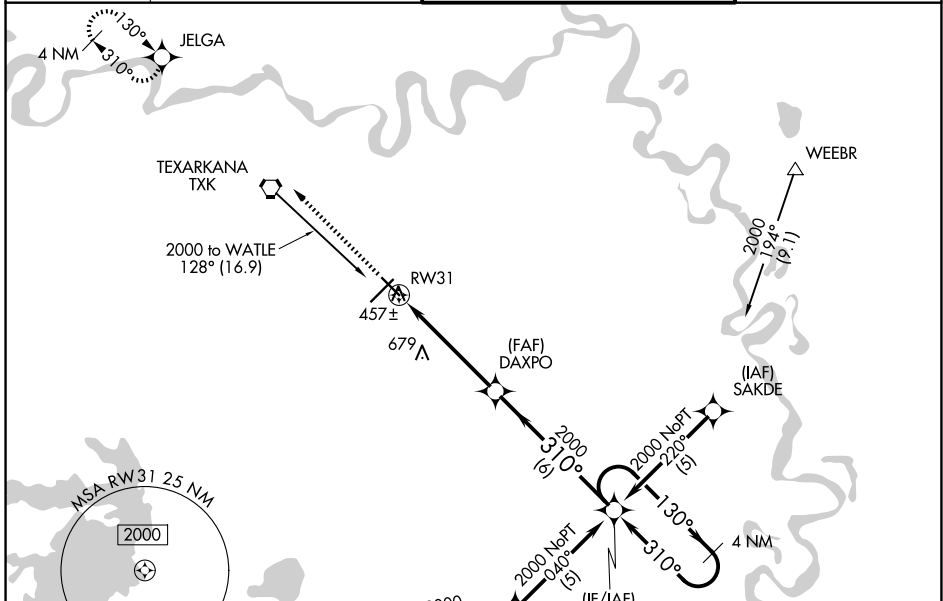
TEXARKANA RGNL-WEBB FLD (TXK)

RNP APCH-GPS.

▼ Rwy 31 helicopter visibility reduction below 3/4 SM NA. For uncompensated Baro-VNAV systems, LNAV/VNAV NA below -15°C or above 54°C. When local altimeter setting not received, use De Queen altimeter setting and increase all DA/MDA 100 feet, increase LPV and LNAV/VNAV all Cats, and LNAV Cat C and D visibility 1/4 SM, and Circling Cat C and D visibility 1/4 SM. Baro-VNAV and VDP NA when using De Queen altimeter setting.

▲ MISSED APPROACH: Climb to 2000 direct JELGA and hold.

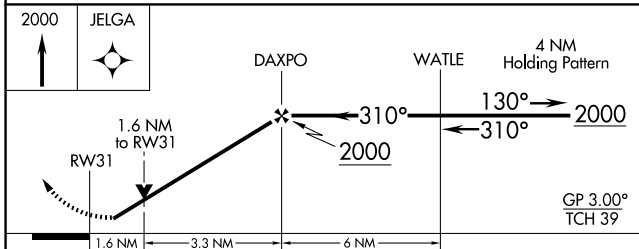
ATIS 120.2	FORT WORTH CENTER 123.925 269.475	TEXARKANA TOWER★ 123.875 (CTAF) 0 235.625	GND CON 119.225
----------------------	---	---	---------------------------



SC-1, 16 APR 2026 to 14 MAY 2026

SC-1, 16 APR 2026 to 14 MAY 2026

ELEV 390	TDZE 390
----------	----------



CATEGORY	A	B	C	D
LPV DA	645-1 255 (300-1)			
LNAV/VNAV DA	707-1 1/4 317 (400-1 1/4)			
LNAV MDA	920-1 530 (600-1)	920-1 1/2 530 (600-1 1/2)	920-1 3/4 530 (600-1 3/4)	
CIRCLING	920-1 530 (600-1)	1000-1 3/4 610 (700-1 3/4)	1080-2 1/4 690 (700-2 1/4)	

