

VORTAC TXK <b>116.3</b> Chan 110	APP CRS <b>122°</b>	Rwy Ldg TDZE Apt Elev	<b>4559</b> <b>388</b> <b>390</b>
--	------------------------	-----------------------------	---

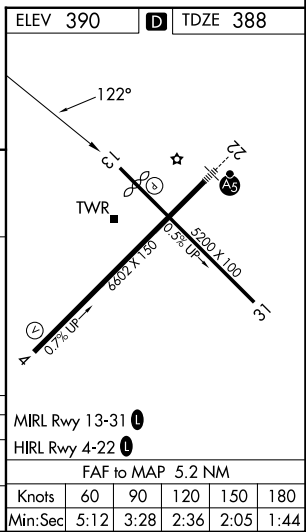
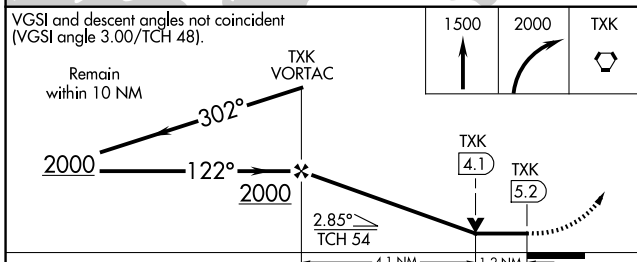
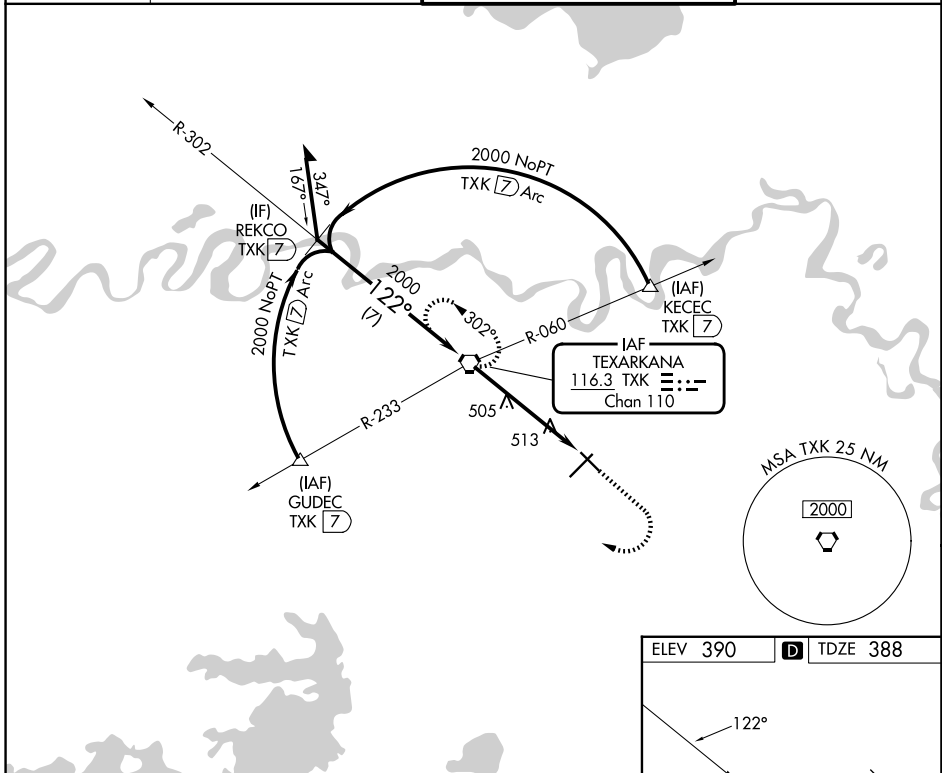
# VOR RWY 13

TEXARKANA RGNL-WEBB FLD (TXK)

**⚠** When local altimeter setting not received, use De Queen altimeter setting and increase all MDA 100 feet, increase S-13 and Cat C and D visibility  $\frac{1}{4}$  SM, and Circling Cat C and D visibility  $\frac{1}{4}$  SM. Visibility reduction by helicopters NA. VDP NA when using De Queen altimeter setting.

**MISSED APPROACH:** Climb to 1500 then climbing right turn to 2000 direct TXK VORTAC and hold.

ATIS <b>120.2</b>	FORT WORTH CENTER <b>123.925 269.475</b>	TEXARKANA TOWER ★ <b>123.875 (CTAF) 235.625</b>	GND CON <b>119.225</b>
----------------------	---	--	---------------------------



SC-1, 16 APR 2026 to 14 MAY 2026

SC-1, 16 APR 2026 to 14 MAY 2026