

# HI-TACAN RWY 13

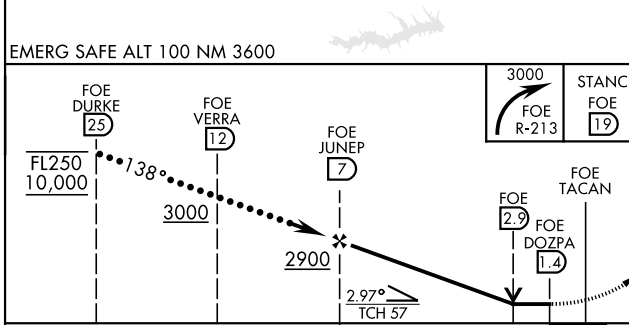
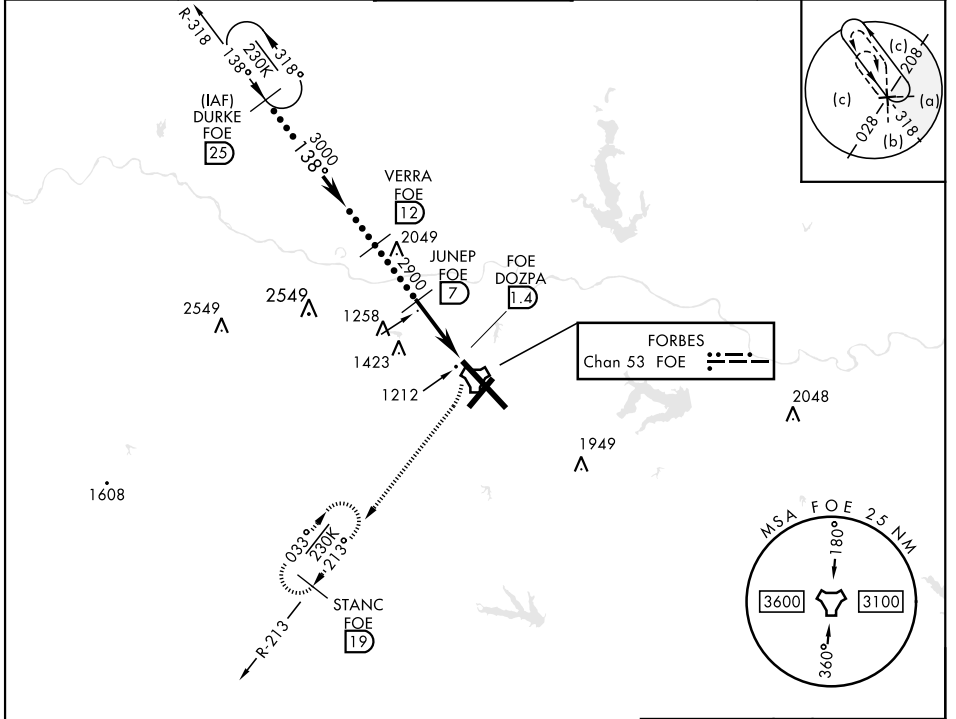
TACAN Chan <b>53</b>	FOE <b>138°</b>	APCH CRS <b>138°</b>	Rwy Ildg <b>12,803</b> TDZE <b>1066</b> Arprt Elev <b>1078</b>
----------------------	-----------------	----------------------	--

[USAF]

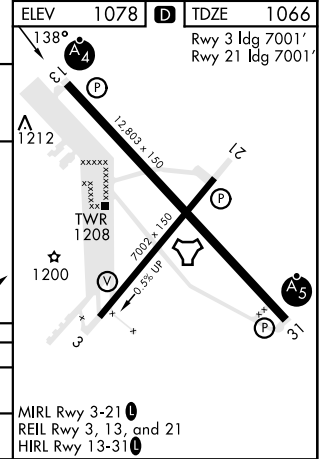
TOPEKA RGNL (KFOE)

	MALSF	MISSED APPROACH: Climbing right turn to 3000 via FOE TACAN R-213 to STANC/19 DME and hold.

ATIS <b>128.25</b>	KANSAS CITY CENTER <b>123.8 343.7</b>	FORBES TOWER ★ <b>120.8 (CTAF) 340.2</b>	GND CON <b>118.425 275.8</b>	UNICOM <b>122.95</b>
--------------------	---------------------------------------	--	------------------------------	----------------------



CATEGORY	C	D	E
S-13	1600-1½	534 (600-1½)	
CIRCLING	1600-1½ 522 (600-1½)	1700-2 622 (700-2)	1720-2¼ 642 (700-2¼)



# HI-TACAN RWY 13

NC-2, 16 APR 2026 to 14 MAY 2026

NC-2, 16 APR 2026 to 14 MAY 2026