

HI-TACAN RWY 31

TACAN Chan 53	FOE	APCH CRS 304°	Rwy ldg 12,803 TDZE 1037 Arprt Elev 1078
-------------------------	-----	-------------------------	---

[USAF]

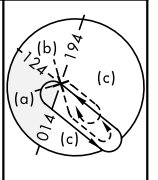
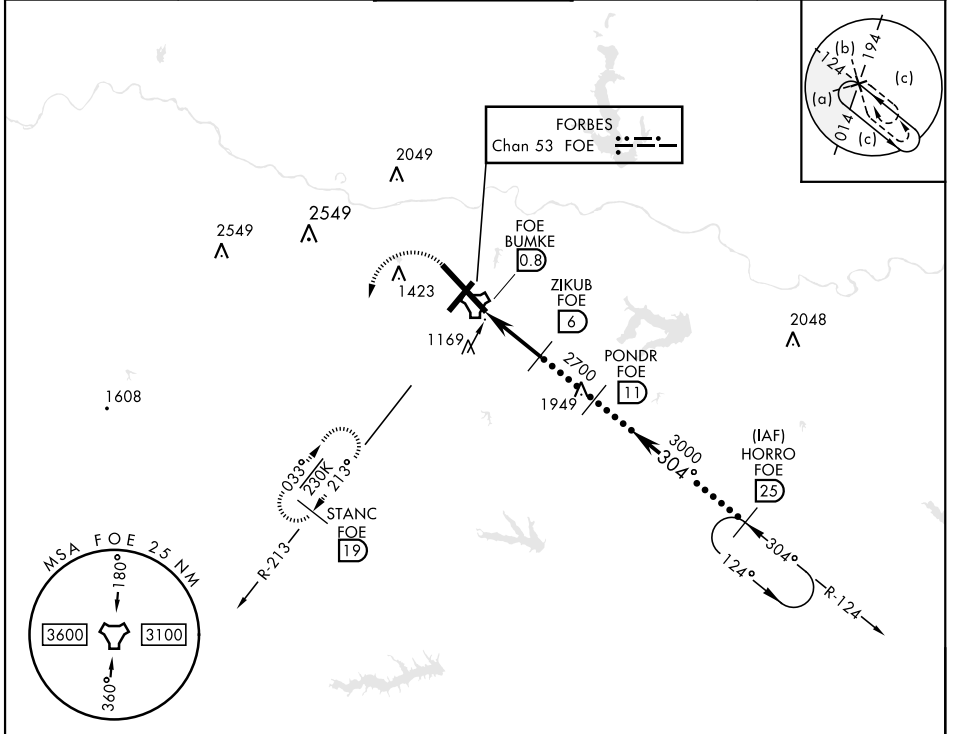
TOPEKA RGNL (KFOE)

M * When ALS inop, increase CAT CDE vis to 1½ miles.

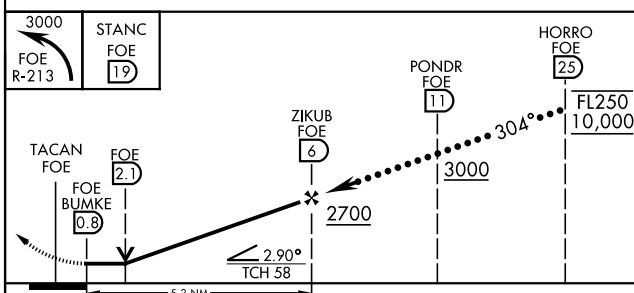
MALS R

MISSED APPROACH: Climbing left turn to 3000 via heading 190° and FOE TACAN R-213 to STANC/19 DME and hold.

ATIS 128.25	KANSAS CITY CENTER 123.8 343.7	FORBES TOWER * 120.8 (CTAF) 340.2	GND CON 118.425 275.8	UNICOM 122.95
-----------------------	--	---	---------------------------------	-------------------------



EMERG SAFE ALT 100 NM 3600



ELEV 1078	TDZE 1037
-----------	-----------

Rwy 3 ldg 7001'
Rwy 21 ldg 7001'

TWR 1208

1200

7002 x 150

12,803 x 150

304°

MIRL Rwy 3-21
REIL Rwy 3, 13, and 21
HIRL Rwy 13-31

CATEGORY	C	D	E
S-31 *	1520/50	483 (500-1)	
CIRCLING	1580-1½ 502 (600-1½)	1700-2 622 (700-2)	1720-2¼ 642 (700-2¼)

HI-TACAN RWY 31

NC-2, 16 APR 2026 to 14 MAY 2026

NC-2, 16 APR 2026 to 14 MAY 2026