

WAAS CH 42834 W21A	APP CRS 215°	Rwy Ldg TDZE Apt Elev	7001 1047 1078
---------------------------------	------------------------	-----------------------------	---

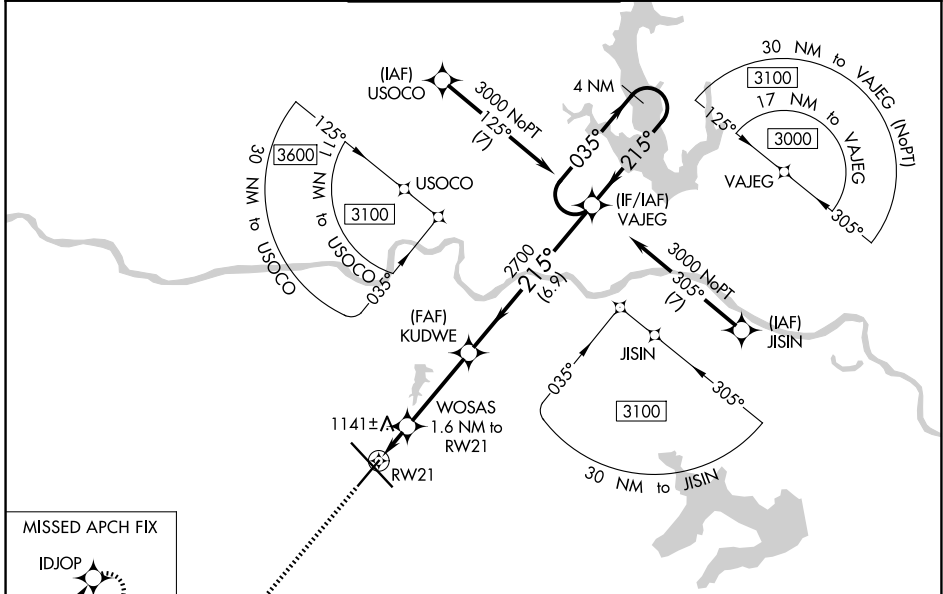
RNAV (GPS) RWY 21

TOPEKA RGNL (F/OE)

⚠ For uncompensated Baro-VNAV systems, LNAV/VNAV NA below -19°C (-2°F) or above 54°C (130°F).
⚠ When local altimeter setting not received, use Philip Billard Muni altimeter setting and increase all DA 45 feet and all MDA 60 feet, increase LPV and LNAV/VNAV all Cats visibility to 1 mile and increase LNAV Cat C/D visibility and Circling Cat D visibility ½ mile. DME/DME RNP-0.3 NA. VDP and Baro-VNAV NA when using Philip Billard Muni altimeter setting. Helicopter visibility reduction below ¾ SM NA.

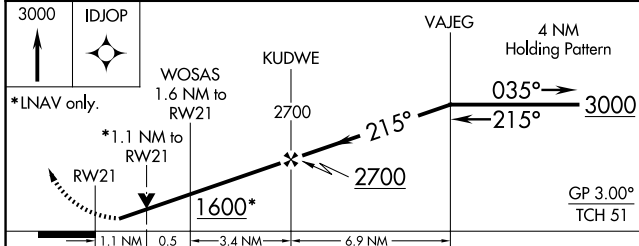
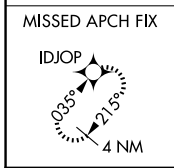
MISSED APPROACH: Climb to 3000 direct IDJOP and hold.

ATIS 128.25	KANSAS CITY CENTER 123.8 343.7	FORBES TOWER* 120.8 (CTAF) 340.2	GND CON 118.425 275.8	UNICOM 122.95
-----------------------	--	--	---------------------------------	-------------------------

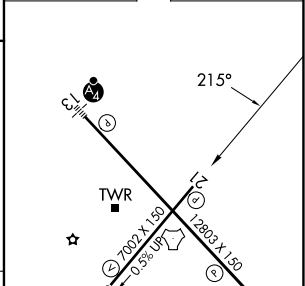


NC-2, 16 APR 2026 to 14 MAY 2026

NC-2, 16 APR 2026 to 14 MAY 2026



ELEV 1078	D TDZE 1047
-----------	--------------------



CATEGORY	A	B	C	D
LPV DA		1311-1	264 (300-1)	
LNAV/VNAV DA		1297-¾	250 (300-¾)	
LNAV MDA	1440-1	393 (400-1)	1440-1½	393 (400-1½)
CIRCLING	1520-1 442 (500-1)	1580-1 502 (600-1)	1580-1½ 502 (600-1½)	1700-2 622 (700-2)

REIL Rwy 3, 13 and 21
 MIRL Rwy 3-21
 HIRL Rwy 13-31