


WAAS CH <b>78399</b> <b>W31A</b>	APP CRS <b>312°</b>	Rwy Ldg <b>12803</b> TDZE <b>1037</b> Apt Elev <b>1078</b>
--	------------------------	--

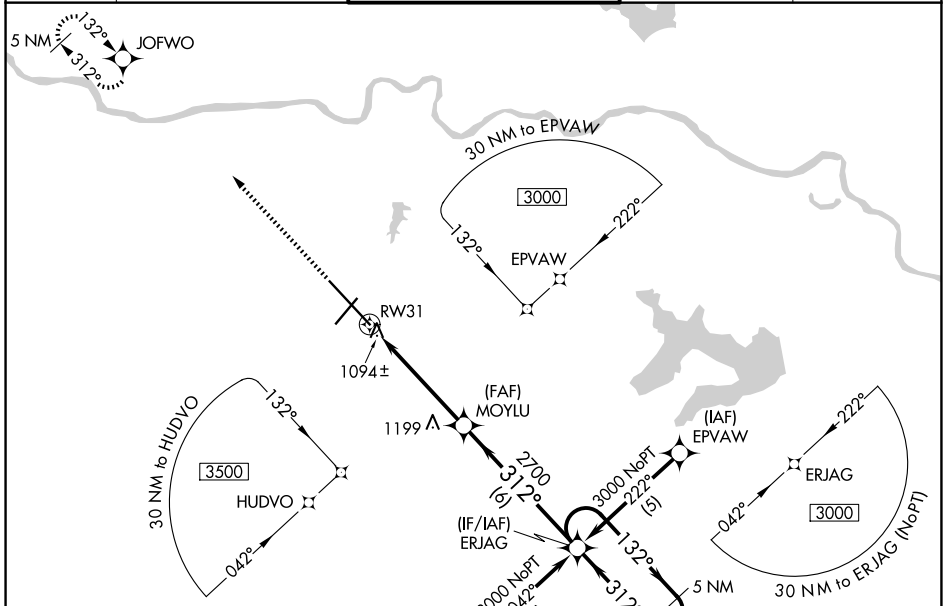
# RNAV (GPS) RWY 31

TOPEKA RGNL (F/OE)

**⚠** For inoperative MALSR, increase LPV all Cats visibility to RVR 4000, and LNAV/VNAV Cat D to RVR 5000. Baro-VNAV NA when using Philip Billard Muni altimeter setting. If local altimeter setting not received, use Philip Billard Muni altimeter setting and increase all DAs/MDAs 60 feet. Baro-VNAV NA below -17°C (2°F). DME/DME RNP-0.3 NA. VDP NA when using Philip Billard Muni altimeter setting.

**MALSR**  
 MISSED APPROACH: Climb to 3600 direct JOFWO and hold.

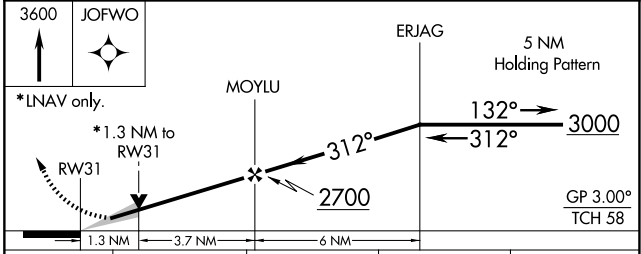
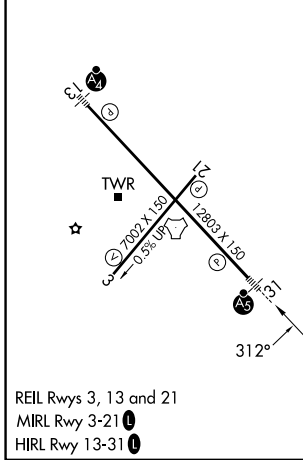
ATIS <b>128.25</b>	KANSAS CITY CENTER <b>123.8 343.7</b>	FORBES TOWER* <b>120.8 (CTAF) 0 340.2</b>	GND CON <b>118.425 275.8</b>	UNICOM <b>122.95</b>
-----------------------	--	--	---------------------------------	-------------------------



NC-2, 16 APR 2026 to 14 MAY 2026

NC-2, 16 APR 2026 to 14 MAY 2026

ELEV 1078	<b>D</b>	TDZE 1037
-----------	----------	-----------



CATEGORY	A	B	C	D
LPV DA	1298/24 261 (300-½)			
LNAV/VNAV DA	1357/24 320 (300-½)			1357/40 320 (300-¾)
LNAV MDA	1500/24	463 (500-½)	1500/40 463 (500-¾)	1500/50 463 (500-1)
CIRCLING	1520-1 442 (500-1)	1580-1 502 (600-1)	1580-1½ 502 (600-1½)	1700-2 622 (700-2)