

| | | | |
|--|------------------------|-----------------------------|---|
| WAAS CH 97535 W28A | APP CRS 279° | Rwy Ldg TDZE Apt Elev | 7016 616 624 |
|--|------------------------|-----------------------------|---|

RNAV (GPS) RWY 28

CHERRY CAPITAL (TVC)

RNP APCH - GPS.

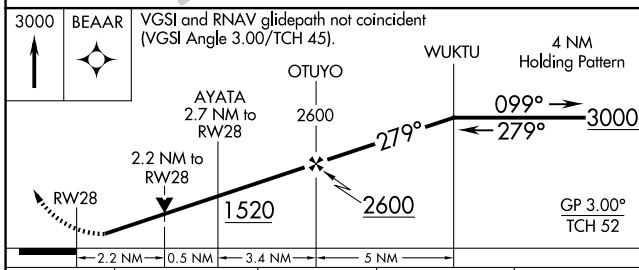
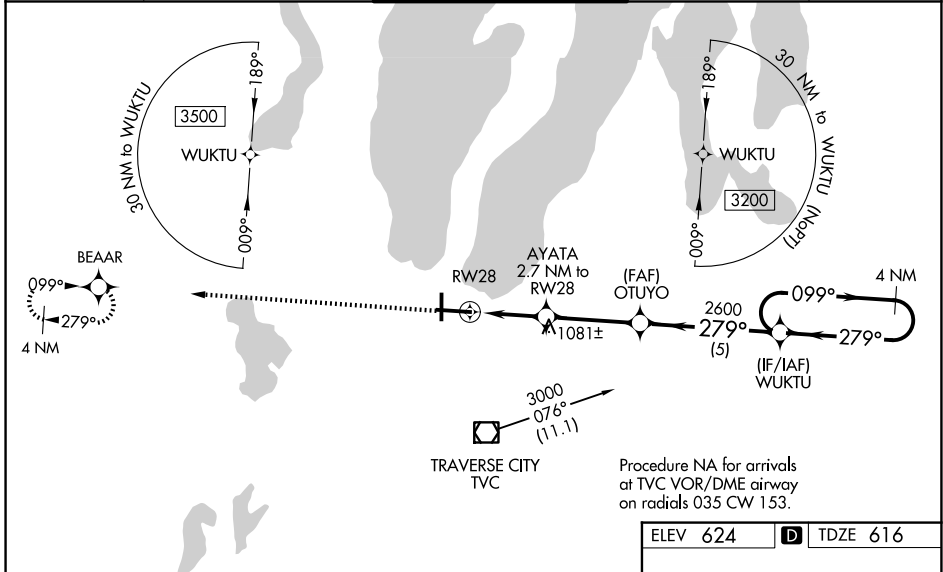
⚠ For uncompensated Baro-VNAV systems, LNAV/VNAV NA below -19°C or above 54°C.
 Baro-VNAV and VDP NA when using ACB altimeter setting. When local altimeter setting not received, use ACB altimeter setting: increase DA 51 feet and all MDA 60 feet. Increase LPV all Cats visibility 1/8 SM, LNAV/VNAV visibility all Cats 1/4 SM and LNAV Cat B visibility 1/4 SM and C/D visibilities 1/8 SM and Circling Cat B/C visibility 1/4 SM. For inop ALS, increase LPV all Cats visibility to 1 1/4 SM, LNAV Cats C/D visibility to 2 SM. For inop ALS when using ACB altimeter setting, increase LPV all Cats visibility to 1 1/2 SM, LNAV Cats C/D visibility to 2 1/2 SM. *Missed approach requires minimum climb of 237 feet per NM to 2000.



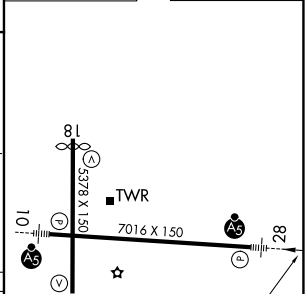
MISSED APPROACH:
Climb to 3000 direct
BEAAR and hold.

❄ -21°C

| | | | | |
|------------------------|--|---|-------------------------------|-------------------------|
| ATIS 119.175 | MINNEAPOLIS CENTER 132.9 338.3 | TRAVERSE CITY TOWER * 124.2(CTAF) 348.6 | GND CON 121.8 348.6 | UNICOM 122.95 |
|------------------------|--|---|-------------------------------|-------------------------|



| | |
|----------|-------------------|
| ELEV 624 | D TDZE 616 |
|----------|-------------------|



| CATEGORY | A | B | C | D |
|--------------|----------|---------------|-----------------|-----------------|
| LPV DA | | * 816-1/2 | 200 (200-1/2) | |
| LPV DA | | 963-7/8 | 347 (400-7/8) | |
| LNAV/VNAV DA | | 1330-2 | 714 (800-2) | |
| LNAV MDA | 1340-1/2 | 724 (800-1/2) | 1340-1 5/8 | 724 (800-1 5/8) |
| CIRCLING | 1340-1 | 716 (800-1) | 1500-2 1/2 | 1720-3 |
| | | | 876 (900-2 1/2) | 1096 (1100-3) |

HIRL Rwy 10-28
MIRL Rwy 18-36
REIL Rwy 36

EC-1, 16 APR 2026 to 14 MAY 2026

EC-1, 16 APR 2026 to 14 MAY 2026