

WAAS CH <b>53733</b> <b>W36A</b>	APP CRS <b>005°</b>	Rwy Ldg TDZE Apt Elev	<b>5108</b> <b>624</b> <b>624</b>
--	------------------------	-----------------------------	---

# RNAV (GPS) RWY 36

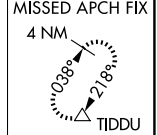
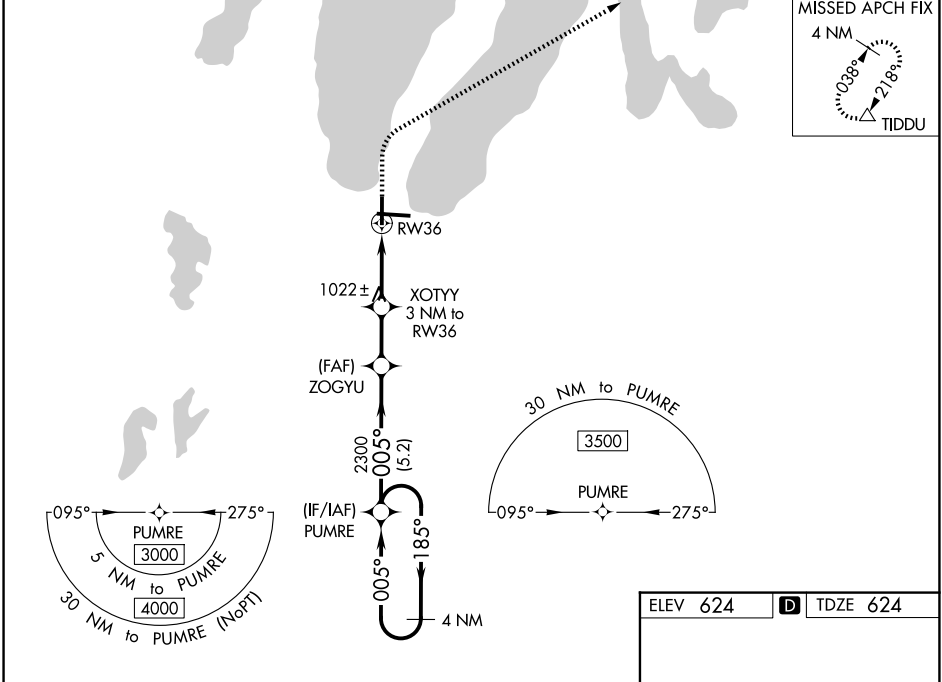
CHERRY CAPITAL (TVC)

RNP APCH - GPS.

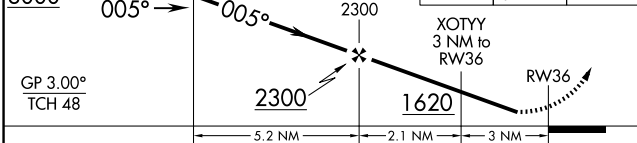
**⚠** Baro-VNAV NA when using ACB altimeter setting. For uncompensated Baro-VNAV systems, LNAV/VNAV NA below -16°C or above 54°C. When local altimeter setting not received use ACB altimeter setting: increase all DA 51 feet and all MDA 60 feet, increase LNAV/VNAV all Cats and Circling Cat C visibilities ¼ SM, and increase LPV all Cats, LNAV Cat C/D and Circling Cat D visibilities ½ SM. Helicopter visibility reduction below ¼ SM NA.

**MISSED APPROACH:**  
Climb to 1400 then climbing right turn to 3000 direct TIDDU and hold.

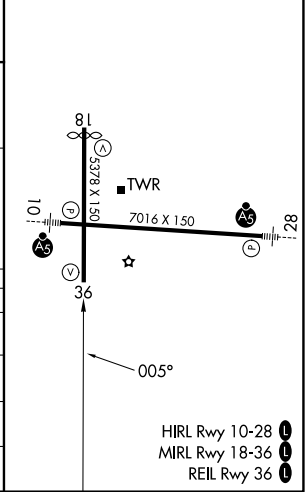
ATIS <b>119.175</b>	MINNEAPOLIS CENTER <b>132.9 338.3</b>	TRAVERSE CITY TOWER * <b>124.2(CTAF) 0 348.6</b>	GND CON <b>121.8 348.6</b>	UNICOM <b>122.95</b>
------------------------	--	---	-------------------------------	-------------------------



4 NM VGSI and RNAV glidepath not coincident (VGSI Angle 3.50/TCH 53).  
Holding Pattern



ELEV 624	<b>D</b> TDZE 624
----------	-------------------



CATEGORY	A	B	C	D
LPV DA	899-7/8		275 (300-7/8)	
LNAV/VNAV DA	1146-1¼		522 (600-1¼)	
LNAV MDA	1280-1 656 (700-1)		1280-17/8 656 (700-17/8)	
CIRCLING	1280-1 656 (700-1)		1500-2½ 876 (900-2½)	1720-3 1096 (1100-3)

EC-1, 16 APR 2026 to 14 MAY 2026

EC-1, 16 APR 2026 to 14 MAY 2026